

STAINLESS STEEL PRODUCTS LTD



PRODUCT CATALOGUE

GENERAL CATALOG

2025



www.ssp.co.ke
[@sspl.ke](https://www.instagram.com/sspl.ke)

No.6 Shimo La Tewa Road
+254719625495



TABLE OF CONTENT

Kitchen	Page 3	Exhaust Systems	Page 132
Railings	Page 72	Laundry	Page 139
Industry	Page 104	Signage	Page 154
Medical	Page 123		



Stainless Steel
Products Limited



0719625495 / 0757159886




info@ssp.co.ke

A photograph of a commercial kitchen with stainless steel equipment, including a large range hood and shelving units. A semi-transparent blue rectangle is overlaid on the center of the image, containing the text.

KITCHEN

SSP offers stainless steel kitchen equipment, including cooking, refrigeration, bakery, and coffee shop equipment. Their solutions are designed for durability and efficiency, catering to both commercial kitchens and specialized food preparation environments.

The background image shows the interior of a cafe or bar. On the left, a menu board is visible on the wall. In the foreground, there is a stainless steel counter with various coffee-making equipment, including what appears to be a espresso machine and some containers. The ceiling has exposed pipes and track lighting. The overall atmosphere is warm and industrial.

BAR & COFFEE SHOP EQUIPMENT

Specialized for brewing coffee, tea, and preparing quick snacks. Includes espresso machines, blenders, milkshake mixers, panini presses, waffle makers, ice machines, juice dispensers, and display units for pastries.



FIAMMA COFFEE MACHINE AUTOMATIC CARAVEL

Model: 2CV TC Black

Description: Automatic Machine, With Static Pre infusion Mechanic system that guarantees an even and gentle pre-infusion for a delicious coffee.

Dimensions (WDH): 665x563x530 mm

Water tap: 1

Steam tap: 2

Boiler capacity: 11 litre

Power: 3.8 kw

Power supply :220-230 V/400V-2N



COFFEE MACHINE MARINA RESTYLE - SEMI AUTOMATIC , SINGLE GROUP

Description: Automatic cleaning, pre-infusion

Water tap: 1

Power, voltage: 1.8 kW, 220-240V / 50-60 Hz

Dimensions: 375x530x485mm

Weight: 30.5 kg



FIAMA - COFFEE MACHINE CARAVEL 2 TC - SEMI AUTOMATIC 2 GROUP

Model: CARAVEL 2 TC

Description: Easy control of boiler temperature Semi-automatic manual coffee dosage Work area allows 14cm high cups and trays for smaller cups Water tap and 2 Steam wands

Dimensions: 665mmW x 563mmD x

530mmH / 59kg

Boiler capacity: 11L

Power 3.8kw / 220-230V / 400v - 2N / plug not supplied





FIAMA - COFFEE MACHINE COMPACT CARAVEL 2 TC - SEMI AUTOMATIC 2 GROUP

Description: Easy control of boiler temperature Semi-automatic manual coffee dosage Work area allows 14cm high cups and trays for smaller cups Water tap and 2 Steam wands

Dimensions: 475mmW x 563mmD x 530mmH / 59kg

Boiler capacity: 11L

Power: 3.8kw / 220-230V / 400v - 2N / plug not supplied



FIAMMA CARAVEL 3

Model: Caravel 3 CV

Description: Traditional single boiler system. Programmable drink and hot water portions and automatic cleaning program for the groups. Groups with static pre-infusion chamber.

Dimensions: 875x563x530mm

Weight: 76kg

Water boiler: 5.0 kW (18 l)

Power: 5.2 kW / ~220-240V / 400V~2N



COFFEE GRINDER

Model: MCF 50

Description: Doser grinder Manual doses Grindstone diameter: 50 mm

Power: 150 W

Speed: 1400 rpm

Hopper capacity: 250 g

Portioner capacity: 180 g

Dose range: 7.0 - 10.5 g

Production: 1 Kg/24h

Voltage: ~220-230V / 50 Hz

Dimensions (WDH) 152x250x382 mm

Weight (kg) 5.2 Kg



COFFEE GRINDER

Model: MCF 65A

description: Doser grinder programmable doses

Automatic grindstone diameter: 65 mm

Power: 340 W

Speed 1400 rpm

Hopper capacity: 1.4 Kg

Portioner capacity: 300 g

Dose range: 5.5 – 8.5 g

Voltage ~220-230V / 50 Hz

Dimensions (WDH): 230x370x600 mm



COFFEE GRINDER AUTOMATIC

LD-900A coffee grinder



COFFEE PERCOLATOR

Description: Stainless steel Coffee

Percolator Size:

Voltage: 220V/50Hz

Power: 2000W

Capacity: 1.8L With 1pc coffee pot



WATER SOFTENER

8L Water softener Size:205*410mm

Capacity:8L

Working Temperature:4-15°C

Working Pressure:1-8BAR

Production capacity:1000L/H



MILK FROTHING JUG 350ML



MILK FROTHING JUG 600 ML



STAINLESS STEEL PRODUCTS LTD

COFFEE MACHINES



COFFEE TEMPER

58mm tamper





BLENDER 2 LTS 1500WATTS

Model: SSP-CB-L2

Blender Color: white

Power:1500W

Voltage:220V/50Hz

Capacity:2.0L



CANOPY TYPE ELECTRIC PROFESSIONAL BLENDER. 4L BLENDER

Model: KF-3180B

4L Blender with timer

Dimension: 260*230*550 mm

Jar Capacity: 4L

Power: 2.2K W

Speed:3000rpm

Color:Black

PC jar,304ss

Blades: pure copper

- Also come in a smaller model of 2.5L and model G8



HEAVT DUTY INDUSTRIAL BLENDER 2 LITS 2200 WATTS

Model: KF-C180.

2L Blender

Dimension:200*200*520mm

Jar Capacity:2L

Power: 2.2K W

Speed:3000rpm

N.W: 8.0KG/

G.W:9.5KG

Color:Black

PC jar,304ss Blades,pure copper



6.5 LITS HEAVY DUTY COMMERCIAL BLENDER

Model: KF-C180.

6.5L Blender

N.W: 8.5KG

Color: Black

PC jar: 304ss

Blades: pure copper



IMMERSION BLENDER 350W WITH WISK

Model no: IB350CV+BLD400+WIK250

Power: 350W

Speed: 4000-16000 rpm

Stick Length: 400mm With wisk for
(250mm)



IMMERSION BLENDER 500W

Model no: IB500LV+BLD500

Power: 500W

Speed: 4000-16000

Stick Length: 500mm



IMMERSION BLENDER 500W

Model no: IB750LV+B LD500

Power: 750W

RPM: 8000 - 20000.

Stick Length: 500mm



EXTRA JUG FOR BLENDER 2 LITS MODEL

Model no: SSP-CB L2

G.W:9.5KG





MILK SHAKE MIXER DOUBLE

Model: ASBL-018

Dimension: 330*160*500 mm

Power: 600W

Net Weight: 6KG

Stainless steel cup: 0.9L



MILK SHAKE MIXER SINGLE

Dimension: 240*225*520 mm



TEA URN 10 LITS

Size: 205*205*390mm
Inner size: 190*190*250mm
Material: SUS304
Net volume: 7.1L
Power: 1800w
Temperature: 30-110°C
Voltage: 220V/50HZ



TEA URN 20 LITS

Dimension: 260*370 mm
Capacity: 20L
Voltage: 220V/50Hz



TEA URN 30 LITS

Dimension: 280*370 mm
Capacity: 30L
Voltage: 220V/50Hz





ICE CRUSHER

Model : SSP-IC-01

Type: Automatic, Double cut

Size: 400*180*310mm

Power: 380W

Capacity: 65kg/h

Rotor speed: 220rpm

Material: ABS + Aluminum

Voltage: 220V/50HZ



ICE MAKING MACHINES

type: Stainless Steel Commercial Ice Cube Machine

Capacity: 45KG

Size: 405*450*750mm

Capacity: 45kg/day

Ice storage: 12kg

Power: 320W

Voltage: 220V/50HZ



ICE MAKING MACHINE

Type: Stainless Steel Commercial Ice Cube Machine

Capacity: 80KG

Size: 510*590*820mm

Capacity: 80kg/day

Ice storage: 15kg

Power: 510W

Voltage: 220V/50HZ



TABLE TOP SOFT ICE CREAM MACHINE

Model: ASMQ-L20ABN

Description: Table Top Stainless Steel 3

Head Soft Ice Cream Machine

Dimension: 544*710*850 mm

Voltage :220V/50Hz

Power: 1900W

Refrigerant: R22

Yield: 20L/H

N.W: 88KG



ICE CREAM FRIDGE

Perfect for display of ice cream at point of sale, automatic defrost. Temperature range -20°C to -15°C with high quality digital temperature controller. Heated front window to prevent condensation build up

- **Dimensions:** 1200 x 540 x 790mm
- **Capacity:** 5 x 5Lt pans
- **Weight:** 115kg



PANINI PRESS- SINGLE LARGE

Model: 811E

Type: Panini griddle

Dimension: 430*380*240 mm

Voltage: 220V 50hz

Power: 2.2 kw

Upper size: 338*220 mm

Bottom size: 340*230 mm

N.W: 20 kg



PANINI PRESS DOUBLE

Model: 813

Type: Panini griddle

Dimension 570*380*240 mm

Voltage: 220V 50hz

HP: 3.6 kw

Weight: 28 kg

Upper size: 214*214 mm

Bottom size: 475*230 mm



WAFFLE MAKING MACHINE SINGLE

Model: FY-1

Packing size: 430*305*295 mm

Dimension: 390*250*260 mm

Power: 1300W

Plate size: 180 mm

Tooth depth: 8 mm

Temp range: 50-250 °C



WAFFLE MAKING MACHINE DOUBLE

Mode: FY-2

Dimension: 500*380*360 mm

Power: 1250W+1250W

Voltage: 220V 50hz

Plate size: 185 mm

Tooth depth: 8 mm

Temp range: 50-250 °C



SQUARE TYPE DOUBLE WAFFLE MAKER - DEEP

Mode: MM-2206D

Dimension: Double Plates Waffle Baker

Dimension: 560x350x260 mm

Voltage: 220V/50Hz/single phase

Power: 1.6+1.6 KW

Temperature: 50~300°C



SINGLE PLATE CONE MAKER

Model: KF-1D

Description: Single Plate Cone Baker

Dimension: 250*270*300mm

Voltage: 220 V/50HZ/Single phase

Power: 1 KW

Temperature: 50~300°C





STAINLESS STEEL HEAVY DUTY 4 SLICE TOASTER

Description: 4 Slice Electric Toaster with timer, 4 slice of bread can be cooked at the same time

Dimension: 315×270×220 mm

Voltage: 220V/50Hz

Power: 1.8KW

Material: All stainless steel



STAINLESS STEEL HEAVY DUTY 6 SLICE TOASTER

Model: LD6SD-A

Description 6 Slice Electric Toaster with timer, 6 slice of bread can be cooked at the same time.

Dimension: 410×270×220mm

Voltage: 220V/50Hz Power 2.5KW

Material : All stainless steel



CONVEYOR TOASTER 300 SLICES PER HOUR

Description: Electric Conveyor Toaster

Size: 368*418*387mm

Voltage: 220~240V/50Hz

Power: 1.94kW



JUICE DISPENSER 3 STATION 3 X18 LITS

Model no ACL-LYJ18Lx3

Description: Three Tank Juice Dispenser

Capacity : 18Lx3

Cool Temperature: 7~12°C

Hot Temperature: 52~58°C 220V 50Hz/60Hz

Power: 350W (cool), 1500W (hot)

Packing Size: 750*470*740mm

G.W/N.W: 42KG/39KG



JUICE EXTRACTOR

Model: ASZX-6

Description: Juice Extractor

Dimension: 430x320x380mm

Power, voltage: 370W, 220V/50Hz

Disc Diameter: 124mm

N.W: 11KG



BACK BAR FRIDGE / BOTTLE COOLER 2 DOOR

Description: 2 door bar cooler Fan-assisted cooling system

Size: 900×505×895mm -black coated plate

Temperature: 2-8°C -digital controller

Voltage: 220V/50HZ



BACK BAR FRIDGE / BOTTLE COOLER 3 DOOR

Description: 3 door bar cooler Fan-assisted cooling system

Size: 1335×505×895mm black coated plate

Temperature: 2-8°C digital controller

Voltage: 220V/50HZ



TABLETOP CAKE SHOWCASE

Size: 900*580*730mm

Base stainless steel

- Digital controller



CAKE DISPLAY UNIT FREE STANDING

Type: Straight type

Base: marble

Temperature: 8~2°C

- Digital controller
- Fan cooling system
- Front glass with heating wire

Comes in these sizes:

- 900*670*1200mm
- 1200*670*1200mm
- 1500*670*1200mm
- 1200*670*1400mm



UPRIGHT CAKE DISPLAY

Description: Upright Cake Display

Size: 900*720*1900mm

Base: SS201

Temperature: 8~2°C

Voltage: 220V/50HZ

- Digital controller
- Fan cooling system
- Scoop compressor



ELECTRIC STAINLESS STEEL WARMING SHOWCASE

Description: Electric Stainless steel warming showcase

Size: 600x490x615mm, 900x490x615mm

Voltage / power: 220V/50Hz/1.84KW

Temperature: 50-85 °C

- 2 Good display effect
- Curved
- Glass Warming Showcase



TABLE TOP HEATED DISPLAY UNIT

Type: Straight type

Size: 900*580*730mm

Base: stainless steel

Temperature: 30~70°C

Voltage: 220V/50HZ

- Digital controller



MULTIFUNCTIONAL STORAGE RACK

Multifunctional storage rack



INSECTOCUTER

Type: Electric shock type -LED-10W
Size: L56*D6*H24.5cm



The background image shows a professional bakery kitchen. On the left, there are several metal racks filled with golden-brown loaves of bread. In the center, a large blue rounded rectangle contains the title and description. To the right, a stainless steel mixer is visible. The wall is covered in light-colored square tiles.

BAKERY EQUIPMENT

Designed for mixing, proofing, and baking bread, cakes, and pastries. Features ovens, mixers, bread slicers, crepe makers, refrigerators, display units, and essential baking trays and pans.



1 DECK ELECTRIC OVEN

Model: SSP-DO--120

Description: Electric Deck Oven, 1 Deck 2 trays Machine

Size: 1230*1035*550mm

Inner size: 870*635*230mm

Pan size: 600*400mm

Power, voltage: 6.6kW, 380~415V/50Hz

Material: 201SS 0.6mm thickness for oven front



PIZZA OVEN 1 DECK ELECTRIC OVEN

Model: SSP-DO--120p

Description: Electric Deck Pizza Oven 1 Deck 2 Trays machine

Size: 1230*1035*550mm

Inner size: 870*635*230mm

Pan size: 600*400mm

Power, voltage: 6.6kW, 380~415V/50Hz

Material: 201SS 0.6mm thickness for oven front



2 DECK ELECTRIC OVEN

Model: SSP-DO--240

Electric Deck Oven 2 Deck 4 Trays Electric Deck Oven

Machine size: 1260*805*1100 mm

Chamber size: 860*670*220 mm

Temperature: 20~400°C

Volt: 380~415V/three phase/13.2 KW /50 Hz



3 DECK ELECTRIC OVEN

Model: SSP-DO-360

Description: Classical 3 Deck 6 Trays

Electric Deck Oven

Machine size: 1260*805*1515mm

Chamber size: 860*670*220mm

Temperature: 20-400°C

Voltage: 380 V/three phase/19.8KW /50 Hz



3 DECK ELECTRIC OVEN 1700MM WIDE

Model: SSP-DO-3120

Description: Classical 3 Deck 12 Trays

Machine size: 1700*1055*1515 mm

Chamber size: 1300*925*220 mm

Voltage: 380V/three phase/38KW/50Hz

Temperature: 20-400°C



ELECTRIC 4 TRAY CONVECTION OVEN WITH THE HUMIDIFIER

Description: Perspective Electric Convection Oven

Dimension: 595*530*570 mm

Voltage: 220 V/2.6 KW

N.W: 39 KG

Inner size: 46*38*36 cm

Pan size: 43.5*31 cm

- Hot Air Circulation Function
- Time Control Function
- Upper heating function
- Spray Function



CONVEYOR PIZZA OVEN HEP-18

Description: Conveyor Pizza Oven

Dimensions (in mm): 1560x750x850

Belt Size (mm) : 457

Work Station Dimensions (mm):

500x1450mm

Voltage: 380V / 50-60 Hz (3-Phase)



ELECTRIC 6 TRAY CONVECTION OVEN WITH THE HUMIDIFIER

Model: WGB-8A

Description: Perspective Electric Convection Oven

Dimension: 835*770*575mm

Voltage: 220~240V/5.8kw/single phase/50Hz N.W 38 KG

Pan size: 40*60cm (Including 4 pans)

Temperature: 50-300°C

- Hot Air Circulation Function
- Time Control Function
- Upper Heating Function
- Spray Function
- Imported Fan



CHICKEN ROASTER 4 TRAYS / ELECTRIC CHICKEN ROTISSERIE

Model: B-266

Dimension: 1010*630*800mm

Power: 6KW Single phase

Capacity: 12-16 pieces chicken

- One temperature controller from 50-300 degree. (6 heaters)
- One inching switch, revolving switch and light switch



STAINLESS STEEL PROOFER 16 TRAYS

Model:SH-16C

Description: 16Trays Classical Proofer With

Automatic Water inlet Function

Size:500*700*1880mm

Voltage:220V/50Hz

Power:2.6kW

Capacity:16Trays Suitable tray

Size:400*600mm Without Trays



STAINLESS STEEL PROOFER 32 TRAYS

Model:SH-16C

Description: 32 Trays Classical Proofer With

Automatic Water inlet Function

Size:500*1400*1880mm

Voltage:220V/50Hz

Power:2.6kW

Capacity:32Trays Suitable tray

Size:400*600mm Without Trays x 2



PIZZA STONE

Size size: 638*430*15mm



PIZZA PRESS

32(Pressure): 320KG

The mold Diameter: 22cm



PIZZA BASE ROLLING MACHINE

Model: WG-PD40 pizza

Diameter: 10-40cm

Dough weight: 50~500g

Voltage: 220V 370W

Size: 540*550*650mm



NN-ST65JM COMMERCIAL MICROWAVE MACHINE – 32 LITS

Model: NN-ST65JM

Description: Commercial Microwave Machine

Brand: Panasonic

Size: 310*525*388mm

Inner size: 245*345*355mm

Power: 1000w

Volume: 32L

Voltage: 220-240V/50HZ

Plate diameter: 340mm



LOW DUTY MICROWAVE OVEN – 25 LITS

Description: Low Duty Microwave Oven

Capacity: 25 litres

- 900w microwave, 1000w grill
- LED display with buttons & dial controls
- Clock display function
- Black with a glass mirror finish



CAKE MIXER 7 LITS

Description: 7L Cake Mixer without cover
Size: 430*300*500mm
Voltage: 220V/50Hz/Single phase
Power: 350W
Capacity: 7L With 1x Hook, 1x beater, 1x wire whisk



B20 PLANETARY MIXERS / FOOD MIXERS – 20 LITS

Model: WG-B20

Description: 20L Planetary Food Mixer with safety guard
Dimension: 770x500x410mm
Bowl capacity : 20L
Voltage: 220V/ 50Hz /Single Phase/1.1 KW
Max dough mixing: 4 KG
Mixing speed: 105/180/408 r/min
Gear Drive



B30 PLANETARY MIXERS / FOOD MIXERS – 30 LITS

Model: WG-B30

Description: 30L Full Belt Food Mixer With Safety Guard
Bowl capacity: 30L
Dim: 650*520*1000mm
Voltage: 220V/single phase/50HZ/1.5kw
Max dough mixing: 4KG
Full belt, with safety cover
G.W: 78 KGS



DOUGH MIXER 16KG/45L DOUGH MIXER WITH TIMER

Description: 16kg/45L Dough Mixer With timer

Dimension: 700x530x800mm

Hook speed: 213/153r/m

Bowl speed: 20/13r/m

Max dough mixing : 16kg

Voltage: 220V/380V,50Hz,2500W

N.W.: 110KG





STAINLESS STEEL UNDER COUNTER FRIDGE WITH GLASS DOOR

Model no SSP-UC-712

- Size: 1200*700*800mm,
- Size: 1500*700*800mm,
- Size: 1800*700*800mm
- Internal capacity: 7 Cubic ft (200Lits)SS
- Internal capacity 9 Cubic Ft (260Lits)SS
- Internal capacity 12 Cubic Ft (340Lits) SS

Material: SUS201

Temperature: 10~-5°C

Voltage: 220V/50HZ

- With glass door
- Digital controller
- Self-closing door



STAINLESS STEEL UNDER COUNTER FRIDGE WITH STAINLESS STEEL DOOR

- Size: 1200*700*800mm,
- Size: 1500*700*800mm
- Internal capacity: 7 Cubic ft (200Lits)SS
- Internal capacity: 9 Cubic Ft (260Lits)SS

Material: SUS201

Cooling temperature: 10~-5°C

Voltage: 220V/50HZ

- Digital controller
- Self-closing door Static
- With Stainless Steel door



STAINLESS STEEL SINGLE DOOR REACH-IN REFRIGERATOR FAN ASSISTED

Size :620*760*1970M, 620*760*1970MM SS

Material: SUS201

Temperature: 10~-5°C

Voltage: 220V/50HZ

With glass door

Self-closing door

Digital controller





GASTRONOM PANS

Steam PanFull: x150 SIZE: 530×325×150mm
1/1

Steam PanFull: x100 GN Full x100

Steam PanFull: x65 GN Full x65

Steam PanFull: XLid GN Full xLID

Steam Pan: 1/2 x150 GN 1/2 x150

Steam Pan: 1/2 x100 GN 1/2 x100

Steam Pan: 1/2 x65 GN 1/2 x65

Steam Pan: 1/2 xLID GN 1/2 xLID

Steam Pan: 1/3 x150 Gastronom pans

Size:325×176×150mm 1/3

Steam Pan: 1/3 x100 Gastronom pans

Size:325×176×100mm 1/3

Steam Pan: 1/3 x65 Gastronom pans

Size:325×176×65mm 1/3

Steam Pan: 1/3 xLID Gastronom pans Cover

Size:325×176mm 1/3

Steam Pan: 1/4 x100 Gastronom pans

Size:325×176×100mm



ALUMINUM OVEN TRAY

Size: 400x600x30mm



TABLETOP CAKE SHOWCASE

Size: 900*580*730mm

Base stainless steel

- Digital controller



CAKE DISPLAY UNIT FREE STANDING

Type: Straight type

Base: marble

Temperature: 8~2°C

- Digital controller
- Fan cooling system
- Front glass with heating wire

Comes in these sizes:

- 900*670*1200mm
- 1200*670*1200mm
- 1500*670*1200mm
- 1200*670*1400mm



UPRIGHT CAKE DISPLAY

Description: Upright Cake Display

Size: 900*720*1900mm

Base: SS201

Temperature: 8~2°C

Voltage: 220V/50HZ

- Digital controller
- Fan cooling system
- Scoop compressor



STAINLESS STEEL REFRIGERATED SALAD / PIZZA TOPPING COUNTERS

Size: 1130 x 404 x 450mm With 4 GN
Containers of 1/3GN

Size: 1480x404x450mm With 6 GN
Containers of 1/3GN

Size: 1830x404x451mm With 8 GN
Containers of 1/3GN



FREE STANDING HEATED SHOWCASE

Type: Straight type

Size: 900*670*1200mm

Base: marble

Temperature: 30~70°C -Digital controller

Voltage: 220V/50HZ



STAINLESS STEEL HEATED DISPLAY CABINET

Model: AR60-1

Description: Electric Stainless steel warming
showcase

Size: 660x490x615mm

Voltage /power: 220V/50Hz/1.84KW

Temperature: 50~85 °C

- Good display effect, Curved Glass showcase
- Temperature controller from 50~85 °C
- There are three layers to display and four sides with glass



CREPE MAKER

Model: ASZH-1E

Description: Stainless steel Electric Crepe Maker, Teflon coating and non-stick material.

Power: 3KW

Dimension: 460*475*230 mm

Voltage: 220V/50Hz

Temperature controller: 50 to 300°C

Cooking plate diameter: 400 mm

N.W 16.5kg



PLATE WARMER DROP IN PLATE DISPENSER

Size: 400*400*770mm SS

Material: SUS201

Power: 400w

Plate size: 23-30cm

Plate quantity: 50 pcs

Top open diameter: 385mm

Voltage: 220V



BREAD SLICER

Model: WG-Q31

Description: 31 Pcs Bread Slicer

Machine size: 515*625*585 mm

Voltage: 220V /50HZ 250W

Blade Quantity: 31 pcs

Bread thickness: 12 mm

Max bread: 380mm



STAINLESS STEEL FINISH WIRE RACK / COOLING RACKS

Description: 4 Layers Chrome Wire Shelves

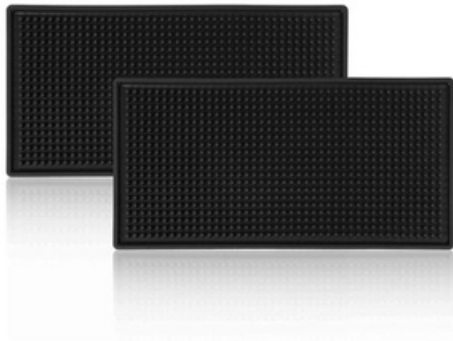
Material Finish: Chrome Plated

Wire diameter: 5.8/4.3/2.8 mm

Wire spacing: 17 mm

Column: 25.4*1.0m

- Without Wheels
- Size: 1200x530x1800mm
- Size: 1500x530x1800mm



BAR MAT BLACK

Bar Mat Black

Color: Black

Material: PVC

Size: 45*30*1cm

Size: 60*8*1cm

A photograph of a modern restaurant interior with a blue semi-transparent overlay. The background shows a dining area with tables, chairs, and a large window looking out onto a green landscape. The ceiling has exposed wooden beams and modern lighting fixtures.

RESTAURANT EQUIPMENT

Built for high-volume cooking and food preparation. Includes fryers, grills, ovens, meat and vegetable machines, shawarma machines, potato processors, soup tureens, ice cream machines, commercial refrigerators, and display units for ready-to-serve meals.



HOT MAX 900 GAS | GR921

Dimension: 850x900x900

Gross (kg) / (m³): 112 / 0.97

Total Power (W): 4×8000

Gas Consumption (LPG): 2.51 kg/h

Description: Gas • On open stand
Body, paneling made of stainless steel.
Operable with LP or natural gas. Burners with pilot, safety valve and thermocouple. If the flame goes out, gas is cut off.



HOT MAX 900 GAS | GR911

Dimension: 425x900x900

Gross (kg) / (m³): 67 / 0.51

Total Power (W): 2×8000

Gas Consumption (LPG): 1.26 kg/h

Description: Gas • On open stand
Body, paneling made of stainless steel.
Operable with LP or natural gas. Burners with pilot, safety valve and thermocouple. If the flame goes out, gas is cut off.



HOT MAX 900 GAS | GR922E

Dimension: 850x900x900

Gross (kg) / (m³): 158 / 0.97

Total Power (W): 4×8000 6000

Gas Consumption (LPG): 2.51 kg/h

Description: Gas • on 2/1 GN Electric oven •
4 burners Without tray and container Body, paneling made of stainless steel. LP or natural gas. Burners with pilot, safety valve and thermocouple. Controlled by thermostats against overheating. The oven with two fans.



HOT MAX 900 GAS | GR922P

Dimension: 850x900x900

Gross (kg) / (m³): 180 / 0.97

Total Power (W): 14000 7500

Gas Consumption (LPG): 1.69 kg/h

Description: Gas • on 2/1 GN gas oven
Without tray and container Body, paneling made of stainless steel.

LP or natural gas. Burners with pilot, safety valve and thermocouple. Oven burner with ignition, pilot, thermocouple and thermostat. If the flame goes out, gas are cutted off.

Each gas burner provides heat economy, operating independently from each other.



HOT MAX 900 GAS | GR931

Dimension: 1275x900x900

Gross (kg) / (m³): 159 / 1.44

Total Power (W): 6×8000

Gas Consumption (LPG): 3.77 kg/h

Description: Gas • On open stand
Body, paneling made of stainless steel.

Operable with LP or natural gas. Burners with pilot, safety valve and thermocouple. If the flame goes out, gas is cut off.



HOT MAX 900 GAS | GR932

Dimension: 1275x900x900

Gross (kg) / (m³): 203 / 1.44

Total Power (W): 6×8000 7500

Gas Consumption (LPG): 4.35 kg/h

Description: Gas • On 2/1 GN gas oven • 6 burners
Without tray and container

GR922K+GR911 Body, paneling made of stainless steel. LP or natural gas. Burners with pilot, safety valve and thermocouple. Oven burner with ignition, pilot, thermocouple and thermostat. If the flame goes out, gas is cut off. Each gas burner provides heat economy, operating independently from each other.



HOTMAX 900 GG911G - FRY TOP

Dimension: 425x900x900

Gross (kg) / (m³): 75 / 0.51

Total Power (W): 7500

Gas Consumption (LPG): 0.59 kg/h

Description: Gas • Grooved surface Mirror finishing • Chrome coated Body, paneling made of stainless steel.

Operable with LP or natural gas. Controlled by thermostat. Burner with ignition, pilot, thermocouple and thermostat.

If the flame goes out, gas is cut off.

Removable fat container.



HOTMAX 900 GG921G - FRY TOP

Dimension: 850x900x900

Gross (kg) / (m³): 145 / 0.97

Total Power (W): 2x7500

Gas Consumption (LPG): 1.18 kg/h

Description: Gas • Grooved surface Mirror finishing • Chrome coated Body, panelling made of stainless steel.

Operable with LP or natural gas. Controlled by thermostat. Burner with ignition, pilot, thermocouple and thermostat. If the flame goes out, gas are cutted off. Removable fat container.



HOTMAX 700 WR721-S | GAS WOK COOKER

Dimension: 800x700x290

Gross (kg) / (m³): 47 / 0.25

Total Power (W): 2x16000

Gas Consumption (LPG): 1.88 kg/h

Description: Gas, Body, paneling made of stainless steel. LP or natural gas

Each gas burner provides heat economy, operating independently from each other.

Burners with pilot, safety valve and thermocouple. If the flame goes out, gas is cut off.



HOTMAX 700 | FRY TOP GG721SG-S

Dimension: 800x700x290

Gross (kg) / (m³): 91 / 0.35

Total Power (W): 2x6000

Gas Consumption (LPG): 0.94 kg/h

Description: Gas • 1/2 Smooth, 1/2 Grooved surface Uncoated surface. Body, panelling made of stainless steel.

Operable with LP or natural gas. Controlled by thermostat. Burner with ignition, pilot, thermocouple and thermostat.

If the flame goes out, gas is cut off.

Removable fat container.



HOTMAX 900 GG921G - FRY TOP

Dimension: 850x900x900

Gross (kg) / (m³): 145 / 0.97

Total Power (W): 2x7500

Gas Consumption (LPG): 1.18 kg/h

Description: Gas • Grooved surface Mirror finishing • Chrome coated Body, panelling made of stainless steel.

Operable with LP or natural gas. Controlled by thermostat. Burner with ignition, pilot, thermocouple and thermostat. If the flame goes out, gas are cut off. Removable fat container.



HOTMAX 700 GAS VAPOR GRILL | GW711-S

Dimension: 400x700x290

Gross (kg) / (m³): 60 / 0.18

Total Power (W): 6000

Gas Consumption (LPG): 0.47 kg/h

Description: Gas, Body, panelling made of stainless steel. Operable with LP or natural gas. Controlled by thermostat. Burner with ignition, pilot, thermocouple and thermostat. If the flame goes out, gas are cut off. Removable fat container.



HOTMAX 600 PASTA COOKER | EMH604

Dimension: 400x600x265

Gross (kg) / (m³): 91 / 0.35

Total Power (W): 1x3000

Basket: 145x200x170

Energy: 220V / 50Hz

Description: Electric. Body paneling baskets and wells made of stainless steel. Controlled by thermostat. Safety thermostat



HOTMAX 700 CHIPS SCUTTLE | EPC711-S

Dimension: 400x700x290

Capacity: 1x28

Gross (kg) / (m³): 30 / 0.21

Total Power (W): 650/350

Energy: 220V 50Hz

Description: Made of stainless steel. Heated with ceramic heating element. Container 1/1 GN.



HOTMAX 700 GAS VAPOR GRILL | GW711-S

Dimension: 400x700x290

Gross (kg) / (m³): 60 / 0.18

Total Power (W): 6000

Gas Consumption (LPG): 0.47 kg/h

Description: Gas, Body, panelling made of stainless steel. Operable with LP or natural gas. Controlled by thermostat. Burner with ignition, pilot, thermocouple and thermostat. If the flame goes out, gas are cutted off. Removable fat container.



STAINLESS STEEL SINGLE BASKET FRYER TABLE TOP WITH TAP

Size:310*480*360mm

Voltage:220V/50Hz

Power:3.25kW

Temp:50-200°C

Comes in 50l, 28l, 19l, 13l, 8l

Both Gas and electric available



STAINLESS STEEL SINGLE BASKET FRYER TABLE TOP

Size:310*480*360mm

Voltage:220V/50Hz

Power:3.25kW

Temp:50-200°C

Comes in 50l, 28l, 19l



STAINLESS STEEL SINGLE BASKET FRYER ON STAND

Size:310*480*360mm

Voltage:220V/50Hz

Power:3.25kWTemp:50-200°C

Comes in 50l, 28l, 19l



STAINLESS STEEL DOUBLE BASKET FRYER TABLE TOP WITH TAP

Size: 540 x 640 x 880mm (+150), 2 Tank
Volt: 420V/50Hz/three phase
Power: 8+8kW
Temp: 50-200°C
Comes in 50l, 28l, 19l, 13l, 8l
Both Gas and electric available



STAINLESS STEEL DOUBLE BASKET FRYER TABLE TOP

Size: 540 x 640 x 880mm (+150), 2 Tank
Volt: 420V/50Hz/three phase
Power: 8+8kW
Temp: 50-200°C
Comes in 50l, 28l, 19l, 13l, 8l
Both Gas and electric available



STAINLESS STEEL DOUBLE BASKET FRYER ON STAND

Size: 540 x 640 x 880mm (+150), 2 Tank
Volt: 420V/50Hz/three phase
Power: 8+8kW
Temp: 50-200°C
Comes in 50l, 28l, 19l, 13l, 8l
Both Gas and electric available



ELECTRIC GRIDDLE ON STAINLESS STEEL STAND

Model: LD822A

Capacity 13L

Gas source LPG



GAS GRIDDLE ON STAINLESS STEEL STAND

Model: AS-722

Description: Counter Top 2 burners Gas

Griddle 1/3 Grooved

Dimension: 730*530*340 mm

Source: LPG

N.W 24.5 kg

Comes with 3 burner 1/3 Grooved

Dimension: 900*630*400 mm



LAVA GRILL GAS ON STAND

Model: AS-589

Description: Counter Top Gas Lava Rock

Grill 2 Burner

Dimension: 600*650*480mm

- LPG/LNG is optional
- Comes with a stand



SALAMANDER GRILL ELECTRIC

Description: Electric Lift Salamander

Dimension: 800*460*505 mm ZH-800.LS

Voltage: 220V/50HZ/Single phase

Power: 6kW





GAS SHAWARMA MACHINE WITH 3 BURNERS

Description: Gas Kebab Machine (3 burners) With oil pan

Size: 540*630*800mm

Source: LPG

BTU: 52545

- With motor on the bottom of the machine so the meat can be turned around.
- For 10-15 kg meat.
- Accidental flame out protection device



GAS SHAWARMA MACHINE WITH 4 BURNERS

Model: ASGB-950

Description: Gas Kebab Machine (4 burners)

Size: 580*630*950mm

N.W.: 27KGS

- With oil pan and accidental flame out protection device
- With motor on the bottom of the machine so the meat can be turned around.
- For 15-20 kg meat.



STAINLESS STEEL UNDER COUNTER FRIDGE WITH GLASS DOOR

Model no SSP-UC-712

- Size: 1200*700*800mm,
- Size: 1500*700*800mm,
- Size: 1800*700*800mm
- Internal capacity: 7 Cubic ft (200Lits)SS
- Internal capacity 9 Cubic Ft (260Lits)SS
- Internal capacity 12 Cubic Ft (340Lits) SS

Material" SUS201

Temperature: 10~-5°C

Voltage: 220V/50HZ

- With glass door
- Digital controller
- Self-closing door



STAINLESS STEEL UNDER COUNTER FRIDGE WITH STAINLESS STEEL DOOR

- Size: 1200*700*800mm,
- Size: 1500*700*800mm
- Internal capacity: 7 Cubic ft (200Lits)SS
- Internal capacity: 9 Cubic Ft (260Lits)SS

Material: SUS201

Cooling temperature: 10~-5°C

Voltage: 220V/50HZ

- Digital controller
- Self-closing door Static
- With Stainless Steel door



STAINLESS STEEL SINGLE DOOR REACH-IN REFRIGERATOR FAN ASSISTED

Size :620*760*1970M, 620*760*1970MM SS

Material: SUS201

Temperature: 10~-5°C

Voltage: 220V/50HZ

With glass door

Self-closing door

Digital controller





STAINLESS STEEL DOUBLE DOOR REACH-IN REFRIGERATOR WITH GLASS DOOR FAN ASSISTED

Size: 1220*760*1970mm SS

Material: SUS201

Temperature: 10~-5°C

Voltage: 220V/50HZ

- Self-closing door Fan
- digital controller
- With glass door



STAINLESS STEEL SOLID DOOR REACH-IN COMBINED FREEZER / REFRIGERATOR

Description: Stainless Steel 4 door Freezer / Refrigerator

Size: 1200*700*1950mm SS

Temperature: Refrigerator : 10~0, Freezer : 0~-15°C

Voltage: 220V/50HZ

- Material: SUS201
- Digital controller
- Static cooling



STAINLESS STEEL 2 DOOR SINGLE DOOR REACH-IN REFRIGERATOR

Description: Stainless Steel Refrigerator

Size: 620*730*1950mm SS

Material: SUS201

Voltage: 220V/50HZ

Temperature: 0~-15°C

- Digital controller
- Static cooling



MEAT DISPLAY SHOWCASE

Description: Meat display counter

- Size: 1200*1050*1200mm,
1500*1050*1200mm

Refrigerant: R290 -Static cooling system

Temperature: 8~2°C

Voltage: 220V/50HZ



ELECTRIC STAINLESS STEEL WARMING SHOWCASE

Description: Electric Stainless steel warming showcase

Size: 600x490x615mm, 900x490x615mm

Voltage / power: 220V/50Hz/1.84KW

Temperature: 50~85 °C

- 2 Good display effect
- Curved
- Glass Warming Showcase



TABLE TOP HEATED DISPLAY UNIT

Type: Straight type

Size: 900*580*730mm

Base: stainless steel

Temperature: 30~70°C

Voltage: 220V/50HZ

- Digital controller



FREE STANDING HEATED SHOWCASE

Type: Straight type

Size: 900*670*1200mm

Base: marble

Temperature: 30~70°C -Digital controller

Voltage: 220V/50HZ



GLASS TOP FREEZER DISPLAY UNIT

Model: SD/SC-360

Static cooling system

Copper tube

Temperature: 0~-18°C

Volume: 360L

R290 220V/50HZ

- Size: 1434×684×870mm
- Size: 1650*700*870mm



STAINLESS STEEL HEATED DISPLAY CABINET

Model: AR60-1

Description: Electric Stainless steel warming showcase

Size: 660x490x615mm

Voltage /power: 220V/50Hz/1.84KW

Temperature: 50-85 °C

- Good display effect, Curved Glass showcase
- Temperature controller from 50-85 °C
- There are three layers to display and four sides with glass



STAINLESS STEEL REFRIGERATED SALAD / PIZZA TOPPING COUNTERS

Size: 1130 x 404 x 450mm With 4 GN
Containers of 1/3GN

Size: 1480x404x450mm With 6 GN
Containers of 1/3GN

Size: 1830x404x451mm With 8 GN
Containers of 1/3GN



GLASS TOP FREEZER DISPLAY UNIT

Model: SD/SC-360

Size: 1434x684x870mm -Copper tube
Temperature: 0~-18°C -Static cooling
system

Volume: 360L

Voltage: 220V/50HZ



FOOD WARMER

Arc Food warmer

Voltage: 220V/50Hz

Power: 0.85kW

Temperature: 30-85°C

Size: 355*425*485mm

Size: 665*500*620mm

Size: 960*460*620mm



TABLE TOP BAIN MARIE

Model: ABM-25

Size 520*195*545mm



MANUAL POTATO CHIPS CUTTER

Model no AS-ST04

Description: Manual potato chips cutter machine

Size: 170*228*150mm

Material: Stainless steel

N.W 4KG



POTATO PEELER 8KG CHARGE 200KGS PER HOUR

Model: TP15

Description: 8KG Potato Peeler

Dimension: 430*440*720 mm

Voltage: 220V/50Hz, single phase

Power: 0.75KW

Capacity: 8KG/Timer

Production Capacity: 240KG/H

- Suitable for potato, taro, sweet potato, water chestnut and so on



POTATO PEELER 15KG CHARGE - 400KGS PER HOUR

Model: TP15

Description: 15KG Potato Peeler

Dimension: 520*495*790 mm

Voltage: 220V/50Hz, single phase

Power: 1.1KW

Capacity: 15KG/Timer

Production Capacity: 400KG/H

- Suitable for potato, taro, sweet potato, water chestnut and so on



ELECTRIC POTATO CHIPS CUTTER MACHINE

Description: Electric potato chips cutter machine

Size: 620*165*270mm

Voltage: 220~240V/50Hz

Power: 40W

Capacity: 100kg/H

Material: 201SS

N.W: 7.95KG

- With 3 Blades: 14X14MM, 10X10MM, 7X7 MM



ICE CRUSHER

Model : SSP-IC-01

Type: Automatic, Double cut

Size: 400*180*310mm

Power: 380W

Capacity: 65kg/h

Rotor speed: 220rpm

Material: ABS + Aluminum

Voltage: 220V/50HZ



ICE MAKING MACHINES

type: Stainless Steel Commercial Ice Cube Machine

Capacity: 45KG

Size: 405*450*750mm

Capacity: 45kg/day

Ice storage: 12kg

Power: 320W

Voltage: 220V/50HZ



ICE MAKING MACHINE

Type: Stainless Steel Commercial Ice Cube Machine

Capacity: 80KG

Size: 510*590*820mm

Capacity: 80kg/day

Ice storage: 15kg

Power: 510W

Voltage: 220V/50HZ



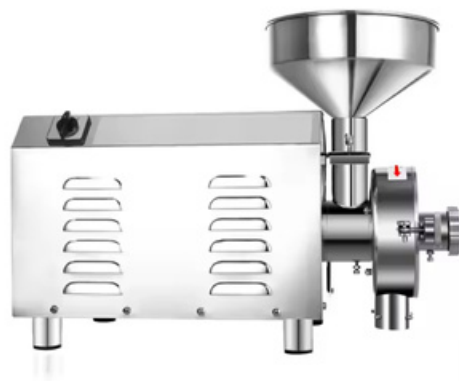
COMMERCIAL HEAVY DUTY MILL GRINDING MACHINE 400 GRAM

Size:16*16*37mm
Voltage:220-240V/50Hz
Power:1800W
Capacity:400g
Rotation Speed:2500r/min



COMMERCIAL HEAVY DUTY MILL GRINDING MACHINE 1500 GRAMS

Size:260*225*388mm
Voltage:220-240V/50Hz
Power:3500W
Capacity:1500g
Rotation Speed:2500r/min



COMMERCIAL HEAVY DUTY GRAIN GRINDER MACHINE 3 LITRES

Size:715x380x380mm
Voltage:220-240V/50Hz
Power:3000W
Capacity:50-60kg/H
Fineness:50~200m
Rotation Speed:1500r/min



VEGETABLE PREPARATION MACHINE

Model: AS-QC205A

Type: Vegetable cutter

Dimension: 590*265*540mm

Voltage: 220V,50Hz,single phase

Power: 1KW

Blades: 5 pcs (Dice 8*8mm, shred 3mm, slice 4.5mm/2mm)

Diameter of blade: 205mm (All copper wire motor)



COMMERCIAL HEAVY DUTY VEGETABLE CHOPPER MACHINE 3 LITRES

Type: Vegetable Chopper

Voltage:220-240V/50Hz

Power:750W

Capacity:3L

Blade Speed:1400



MEAT SLICER

Model: B300B-4

Description: 12 Inch Semi-automatic Meat Slicer

Size: 590*525*440mm

Voltage: AC-220V / 50Hz

Power: 270W

Blade Diameter: 300mm

N.W/G.W: 27kg/30kg

Packing Size: 635x535x525mm

- adjust slicer thickness from 0-17mm
- cut off the itinerary :220mm



MEAT MINCER NO: 12

Model: 12

Description: Electric Meat Mincer

Power: 1100w

Capacity: 220kg/h

Net weight: 30kg Gross



TABLE TOP SOFT ICE CREAM MACHINE

Model: ASMQ-L20ABN

Description: Table Top Stainless Steel 3

Head Soft Ice Cream Machine

Dimension: 544*710*850 mm

Voltage :220V/50Hz

Power: 1900W

Refrigerant: R22

Yield: 20L/H

N.W: 88KG





TABLE TOP HEAVY DUTY
GAS STOCK POT
COOKER - 2 RING
BURNER

Type: 2 ring Burner

Size: 300mm x 300mm x 250mm

Burner diameter 180mm



HEAVY DUTY GAS STOCK
POT COOKER - 3 RING
BURNER

Type: 3 ring Burner

Size: 400mm x 400mm x 250mm

Burner diameter: 220mm



HEAVY DUTY GAS STOCK
POT COOKER - 4 RING
BURNER

Type: 4 ring Burner

Size: 500mm x 500mm x 250mm

Burner diameter: 340mm



GASTRONOM PANS

Steam PanFull: x150 SIZE: 530×325×150mm
1/1

Steam PanFull: x100 GN Full x100

Steam PanFull: x65 GN Full x65

Steam PanFull: XLid GN Full xLID

Steam Pan: 1/2 x150 GN 1/2 x150

Steam Pan: 1/2 x100 GN 1/2 x100

Steam Pan: 1/2 x65 GN 1/2 x65

Steam Pan: 1/2 xLID GN 1/2 xLID

Steam Pan: 1/3 x150 Gastronom pans

Size:325×176×150mm 1/3

Steam Pan: 1/3 x100 Gastronom pans

Size:325×176×100mm 1/3

Steam Pan: 1/3 x65 Gastronom pans

Size:325×176×65mm 1/3

Steam Pan: 1/3 xLID Gastronom pans Cover

Size:325×176mm 1/3

Steam Pan: 1/4 x100 Gastronom pans

Size:325×176×100mm



ALUMINUM OVEN TRAY

Size: 400x600x30mm



CREPE MAKER

Model: ASZH-1E

Description: Stainless steel Electric Crepe Maker, Teflon coating and non-stick material.

Power: 3KW

Dimension: 460*475*230 mm

Voltage: 220V/50Hz

Temperature controller: 50 to 300°C

Cooking plate diameter: 400 mm

N.W 16.5kg



HAMBURGER PRESS

Diameter: 100mm

Height: 160mm

N.W: 4.8KG



SOUP TUREEN

Model: ZQ-C17

Description: Electric Soup pot

Voltage: 220V 50/60Hz

Inside pot diameter: 23cm

Inside Pot Depth: 26cm

Outside Diameter: 34cm

Product height: 34cm



HOOD TYPE DISH WASHER

Description: Dish washer

Dimension: 670*780*1450mm, without working table, with 3 baskets

Voltage /Power: 380V/3 Phase/50Hz/13kw

N.W: 115kg

G.W: 130kgs



POPCORN MACHINE

Description: Popcorn Maker

Size: 540*405*660mm

Voltage: 220V/50Hz/1.3Kw

Capacity: 8Oz

- Tempered glass



KEG DISPENSER WITH COOLER

Size: 590*590*840mm

Inner size: 540*470*720mm

Material: SUS304

Weight: 40kg

- 2*20L keg+1*4L cylinder Temp control+ display R600a



PLATE WARMER DROP IN PLATE DISPENSER

Size: 400*400*770mm SS

Material: SUS201

Power: 400w

Plate size: 23-30cm

Plate quantity: 50 pcs

Top open diameter: 385mm

Voltage: 220V



COMMERCIAL CUP HOLDER

Description: Beverage cup lid divider

Size: 620*205*205mm With 4

SIZE OF Cup (9.4CM, 7.6CM, 6.4CM 5.5CM)

Material: PP/ABS

Color: Black



MULTIFUNCTIONAL STORAGE RACK

Multifunctional storage rack



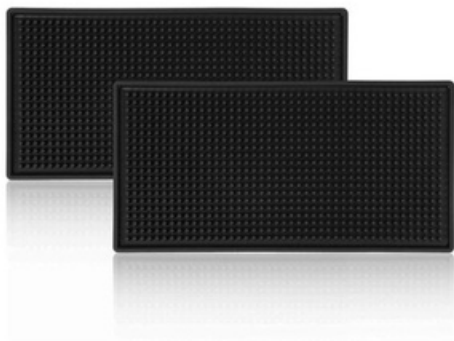
INSECTOCUTER

Type: Electric shock type -LED-10W
Size: L56*D6*H24.5cm



HEAT LAMP

Description: Heating Lamps
Diameter: 17.5CM
Voltage: 220V
Power: 250W



BAR MAT BLACK

Bar Mat Black
Color: Black
Material: PVC

Size: 45*30*1cm
Size: 60*8*1cm



STAINLESS STEEL FINISH WIRE RACK / COOLING RACKS

Description: 4 Layers Chrome Wire Shelves

Material Finish: Chrome Plated

Wire diameter: 5.8/4.3/2.8 mm

Wire spacing: 17 mm

Column: 25.4*1.0m

- Without Wheels
- Size: 1200x530x1800mm
- Size: 1500x530x1800mm





RAILINGS

SSP offers custom stainless steel railings for safety, strength, and aesthetic appeal in residential and commercial spaces.



ROUND ROD TYPE HANDRAIL SYSTEM – ROUND BALUSTRADES

- Suitable for handrail staircase in apartment, balcony, deck etc
- All fittings are very simple and easy to DIY



COMPONENTS:



BALUSTRADE COVERS

Material: Stainless Steel 304

Surface: Mirror Finish

Size(mm): 38.1*94*20*0.8, 50.8*94*20*0.8,
63*94*20*0.8





TOP SADDLE

Material: Stainless Steel 304

Size(mm): 38.1/50.8, 50.8 / 50.8

Surface: Mirror Finish



STAIR ROD BRACKETS

Material: Stainless Steel 304

Surface: Mirror Finish

Size(mm): 12.7, 16, 19



DOME END CAPS

Material: Stainless Steel 304

Surface: Mirror Finish

Size(mm): 12, 16, 19



FLOOR FLANGE

Material: Stainless Steel 304,

Surface: Mirror Finish

Size(mm): 80*38*3mm



BENDS / ELBOWS

Material: Stainless Steel 304

Surface: Mirror Finish

Size(mm): 12, 19, 25.4, 30, 38, 50.8, 63



BENDS / ELBOWS WITH SLEEVES

Material: Stainless Steel 304

Surface: Mirror Finish

Size(mm): 50.8



SIDE BALUSTRADE MOUNTING BRACKET

Material: Stainless Steel 304

Surface: Mirror Finish

Size(mm): For Dia: 50mm Balustrade



CUSTOM MADE STAINLESS STEEL ROUND RODS

Full range of SS railings available.

Customizable to your needs

We can supply all fittings for railings



ROUND POST WITH FIVE HOLDERS

Material: Stainless Steel 304

Surface: Mirror Finish

Size(mm): 50.8, 42.4



ROUND ROD TYPE HANDRAIL SYSTEM – FLAT BALUSTRADES

- Suitable for handrail staircase in apartment, balcony, deck etc
- All fittings are very simple and easy to DIY



COMPONENTS:



DOMES END CAPS

Material: Stainless Steel 304

Surface: Mirror Finish

Size(mm): 12, 16, 19





ADJUSTABLE ELBOW

Material: Stainless Steel 304

Surface: Mirror Finish

Size(mm): 12, 16, 19



END CAPS

Material: Stainless Steel 304

Surface: Mirror Finish

Size(mm): 50.8*1.2, 63*1.2, 25*1.0, 20*1.0



BALUSTRADE COVERS

Material: Stainless Steel 304

Surface: Mirror Finish

Size(mm): 38.1*94*20*0.8, 50.8*94*20*0.8,
63*94*20*0.8



BENDS / ELBOWS

Material: Stainless Steel 304

Surface: Mirror Finish

Size(mm): 12, 19, 25.4, 30, 38, 50.8, 63

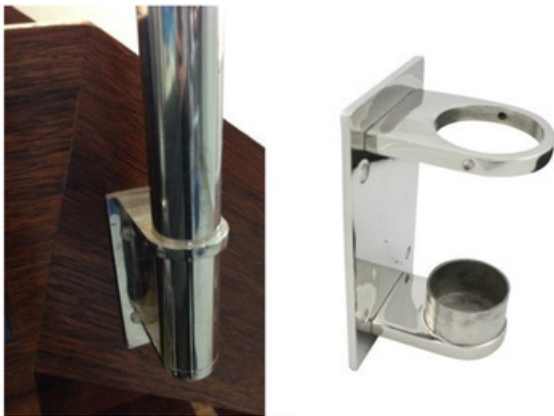


BENDS / ELBOWS WITH SLEEVES

Material: Stainless Steel 304

Surface: Mirror Finish

Size(mm): 50.8



SIDE BALUSTRADE MOUNTING BRACKET

Material: Stainless Steel 304

Surface: Mirror Finish

Size(mm): For Dia: 50mm Balustrade



CUSTOM MADE STAINLESS STEEL ROUND RODS

Full range of SS railings available.
Customizable to your needs
We can supply all fittings for railings



FLAT BAR POST WITH FIXED SPIDER

Material: Stainless Steel 304
Surface: Mirror Finish
Size(mm): 65 mm

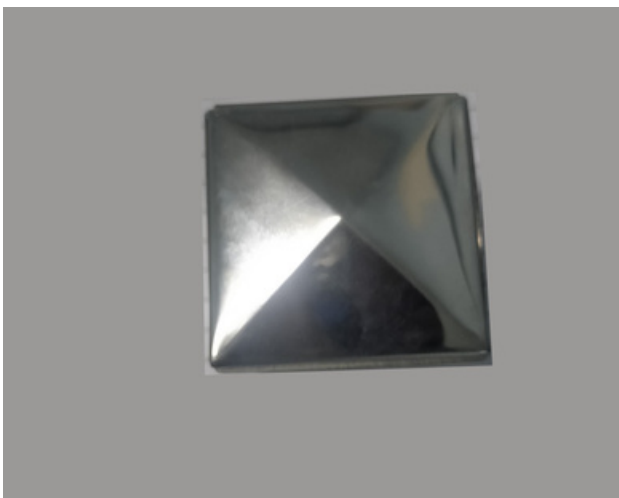


ROUND ROD TYPE HANDRAIL SYSTEM – SQUARE BALUSTRADES

- Suitable for handrail staircase in apartment, balcony, deck etc
- All fittings are very simple and easy to DIY



COMPONENTS:



END CAP SQUARE

Material: Stainless Steel 304

Surface: Mirror Finish

Size(mm): 25x25, 40x40, 50x50



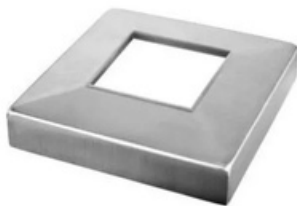


TOP SADDLE SQUARE

Material: Stainless Steel 304

Surface: Mirror Finish

Size(mm): 40x40, 50x50

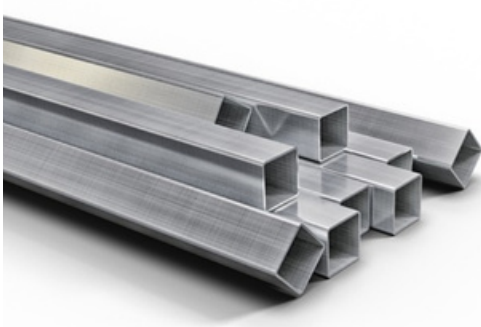


DOME CAP SQUARE

Material: Stainless Steel 304

Surface: Mirror Finish

Size(mm): 40x40, 50x50



CUSTOM MADE STAINLESS STEEL SQUARE RODS

Full range of SS railings available.

Customizable to your needs

We can supply all fittings for railings



SQUARE POST WITH FIVE SQUARE HOLDER

Material: Stainless Steel 304

Surface: Mirror Finish

Size(mm): 40x40



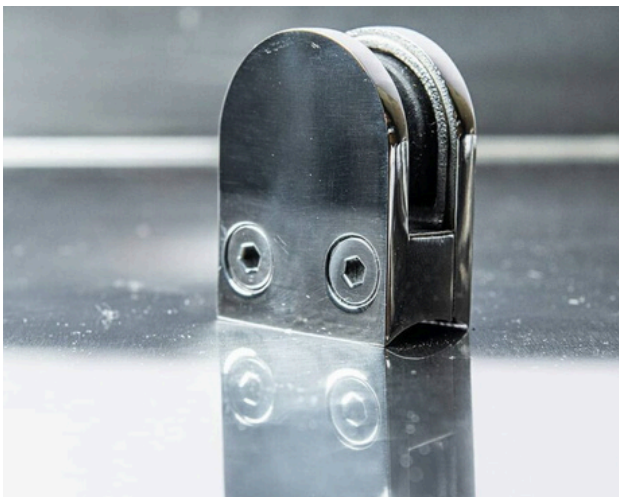


GLASS TYPE HANDRAIL SYSTEM – ROUND BALUSTRADES

- Suitable for handrail staircase in apartment, balcony, deck etc
- All fittings are very simple and easy to DIY



COMPONENTS:



GLASS BRACKET HEAVY

Material: Stainless Steel 304, Stamping
Glass Clamp

Surface: Mirror Finish

Size(mm): 50*40*25mm for 6mm glass for
tube 38.1mm, 45*63 for round pipe



TOP SADDLE

Material: Stainless Steel 304

Size(mm): 38.1/50.8, 50.8 / 50.8

Surface: Mirror Finish



BALUSTRADE COVERS

Material: Stainless Steel 304

Surface: Mirror Finish

Size(mm): 38.1*94*20*0.8, 50.8*94*20*0.8,
63*94*20*0.8



FLOOR BRACKET SET

Material: Stainless Steel 304

Surface: Mirror Finish

Size(mm): 38.1, 50.8



CUSTOM MADE STAINLESS STEEL ROUND RODS

Full range of SS railings available.
Customizable to your needs
We can supply all fittings for railings



ROUND INLINE POST WITH TWO GLASS CLIPS AT 180°

Material: Stainless Steel 304
Surface: Mirror Finish
Size(mm): 42.4, 50.8



ROUND INLINE POST WITH TWO GLASS CLIPS

Material: Stainless Steel 304
Surface: Mirror Finish
Size(mm): 42.4, 50.8



GLASS TYPE HANDRAIL SYSTEM – SQUARE BALUSTRADES

- Suitable for handrail staircase in apartment, balcony, deck etc
- All fittings are very simple and easy to DIY



COMPONENTS:



GLASS BRACKET HEAVY

Material: Stainless Steel 304, Stamping

Glass Clamp

Surface: Mirror Finish

Size(mm): 50*40*25mm for 6mm glass for
tube 38.1mm, 45*63 for round pipe

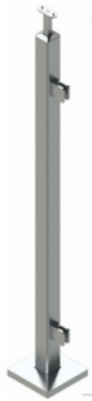


SQUARE INLINE POST WITH TWO SMALL GLASS CLIP 180°

Material: Stainless Steel 304

Surface: Mirror Finish

Size(mm): 40x40, 50x50



SQUARE END POST WITH TWO SMALL GLASS CLIP

Material: Stainless Steel 304

Surface: Mirror Finish

Size(mm): 40x40, 50x50



CUSTOM MADE STAINLESS STEEL ROUND RODS

Full range of SS railings available.

Customizable to your needs

We can supply all fittings for railings

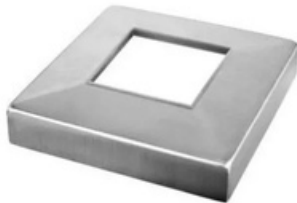


SQUARE END POST WITH TWO SMALL GLASS CLIP

Material: Stainless Steel 304

Surface: Mirror Finish

Size(mm): 40x40, 50x50



DOME CAP SQUARE

Material: Stainless Steel 304

Surface: Mirror Finish

Size(mm): 40x40, 50x50



FLOOR BRACKET SET

Material: Stainless Steel 304

Surface: Mirror Finish

Size(mm): 38.1, 50.8



GLASS TYPE HANDRAIL SYSTEM – ROUND BALUSTRADES

- Suitable for handrail staircase in apartment, balcony, deck etc
- All fittings are very simple and easy to DIY



COMPONENTS:



GLASS BRACKET HEAVY

Material: Stainless Steel 304, Stamping
Glass Clamp

Surface: Mirror Finish

Size(mm): 50*40*25mm for 6mm glass for
tube 38.1mm, 45*63 for round pipe



TOP SADDLE

Material: Stainless Steel 304

Size(mm): 38.1/50.8, 50.8 / 50.8

Surface: Mirror Finish



BALUSTRADE COVERS

Material: Stainless Steel 304

Surface: Mirror Finish

Size(mm): 38.1*94*20*0.8, 50.8*94*20*0.8,
63*94*20*0.8



FLOOR BRACKET SET

Material: Stainless Steel 304

Surface: Mirror Finish

Size(mm): 38.1, 50.8



STAINLESS STEEL PRODUCTS LTD

GLASS RAILINGS



CUSTOM MADE STAINLESS STEEL ROUND RODS

Full range of SS railings available.
Customizable to your needs
We can supply all fittings for railings



Stainless Steel
Products Limited



0719625495 / 0757159886



info@ssp.co.ke



GLASS TYPE HANDRAIL SYSTEM – FLAT BALUSTRADES

- Suitable for handrail staircase in apartment, balcony, deck etc
- All fittings are very simple and easy to DIY



COMPONENTS:



PIPE TO GLASS BRACKET

Material: Stainless Steel 304
Surface: Mirror Finish



CUSTOM MADE STAINLESS STEEL ROUND RODS

Full range of SS railings available.
Customizable to your needs
We can supply all fittings for railings



TWO WAY GLASS HOLDER

Material: Stainless Steel 304
Surface: Mirror Finish
Size(mm): 6-16



FLOOR BRACKET SET

Material: Stainless Steel 304
Surface: Mirror Finish
Size(mm): 38.1, 50.8

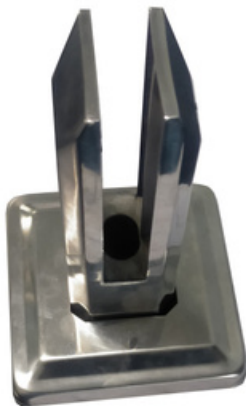


GLASS TYPE HANDRAIL SYSTEM – FRAMELESS GLASS RAILING

- Suitable for handrail staircase in apartment, balcony, deck etc
- All fittings are very simple and easy to DIY



COMPONENTS:



GLASS SPIGOT

Material: Stainless Steel 304

Surface: Mirror Finish

Size(mm): 50x50x160 with cover



GLASS STANDOFF

Material: Stainless Steel 304

Surface: Mirror Finish

Size(mm): D40*30*10mm / bolt 10*100mm



TOP MOUNT CHANNEL

Material: Stainless Steel 304

Surface: Mirror Finish

length: Depends on the desired size



ROUND U TUBE

Material: Stainless Steel 304

Surface: Mirror Finish

Size(mm): 42.4, 48.3



CABLE HANDRAIL SYSTEM

- Suitable for handrail staircase in apartment, balcony, deck etc
- All fittings are very simple and easy to DIY



COMPONENTS:



WIRE ROPE

Material: Stainless Steel 304
Surface: Mirror Finish
Size(mm): 4, 6





CUSTOM MADE STAINLESS STEEL ROUND RODS

Full range of SS railings available.
Customizable to your needs
We can supply all fittings for railings



END CAPS

Material: Stainless Steel 304
Surface: Mirror Finish
Size(mm): 50.8*1.2, 63*1.2, 25*1.0, 20*1.0



ROUND POST WITH FIVE HOLES

Material: Stainless Steel 304
Surface: Mirror Finish
Size(mm): 38.1, 50.8



DOOR AND GLASS SHOWER FITTINGS

- Suitable for handrail staircase in apartment, balcony, deck etc
- All fittings are very simple and easy to DIY



COMPONENTS:



HANDLE S-TYPE FOR GLASS DOOR

Material: Stainless Steel 304

Surface: Mirror Finish

Contemporary design for better aesthetics.





RECTANGULAR HANDLE FOR GLASS DOOR

Material: Stainless Steel 304

Surface: Mirror Finish

Contemporary design for better aesthetics.



HANDLE H-TYPE FOR GLASS DOOR

Material: Stainless Steel 304

Surface: Mirror Finish

Contemporary design for better aesthetics.

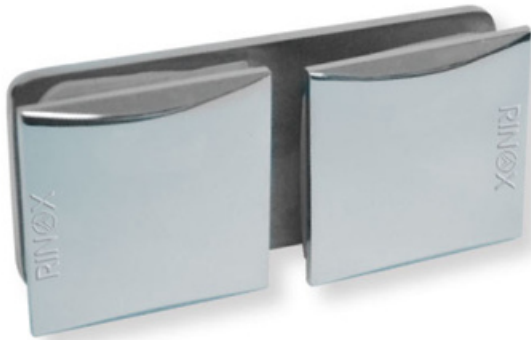


HANDLE D-TYPE FOR GLASS DOOR

Material: Stainless Steel 304

Surface: Mirror Finish

Contemporary design for better aesthetics.



CONNECTOR TO JOIN GLASS TO GLASS PANEL AT 180°

Material: Stainless Steel 304

Surface: Mirror Finish

Contemporary design for better aesthetics.



CONNECTOR TO JOIN WALL TO GLASS PANEL

Material: Stainless Steel 304

Surface: Mirror Finish

Contemporary design for better aesthetics.



SLIDING DOOR SET WITH CARRIAGE ONE WHEEL WITH TUBE

Material: Stainless Steel 304

Surface: Mirror Finish

Contemporary design for better aesthetics.



HOLLOW BALLS

Material: Stainless Steel 304

Surface: Mirror Finish

Size(mm): 12, 16, 19, 25

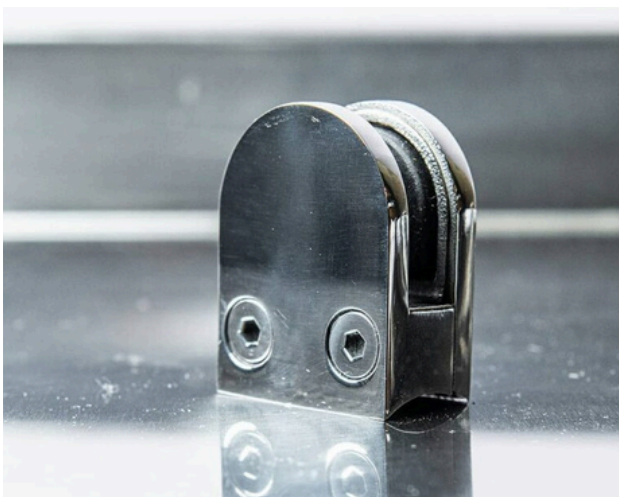


WALL BRACKETS

Material: Stainless Steel 304

Size(mm): 38.1

Surface: Mirror Finish



GLASS BRACKET LIGHT

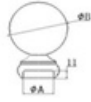
Material: Stainless Steel 304, Stamping

Glass Clamp

Surface: Mirror Finish

Size(mm): 45

- Long (mm): 8, 10
- short(mm): 8, 10



RAILING BALLS

Material: Stainless Steel 304

Surface: Mirror Finish

Size(mm) Diameter: 38mm, 50mm




SWIMMING POOL BRACKETS

Material: Stainless Steel 304

Surface: Mirror Finish

Size(mm): 30, 38

- imported: 50mm

The background of the image shows an industrial setting. In the upper half, there's a grey electrical control cabinet with a yellow warning triangle symbol. To the right, a blue industrial component is partially visible. The lower half of the image shows a large, curved metal grate or conveyor system, possibly part of a material processing line. A bright light source is visible in the distance, creating a strong glare. A semi-transparent blue rounded rectangle is overlaid in the center, containing the main title and a descriptive paragraph.

INDUSTRIES & FABRICATION

SSP offers durable stainless steel products for industries, including cable glands, custom fabrications, and polishing materials for industrial applications.



STAINLESS STEEL 4 TIER RACKS

Description: Made from heavy duty stainless steel. Ideal for use in food processing industry, horticulture, hospitals, hotels, and commercial kitchens.

Size(MM): 900x500x1800, 1100x500x1800, 1500x500x1800, 1800x500x1800, 2000x500x1800

- Constructed from Stainless Steel Material of 1.5mm and Stainless Steel Square tubes of 40mm x 40mm x 1.5mm
- Available in 3 tiers, 4 Tiers and 5 Tiers.
- Rack are available in Solid Shelves, Slated Shelves and Perforated Shelves.
- Castor Wheels can be added.



STAINLESS STEEL WALL SHELF

Sizes(MM): 2400X600X850

- The commercial sinks can be customized to customers' requirements.
- A press type glass rinser, brush scrubber and high pressure spring loaded water faucet for rinsing can be added.



STAINLESS STEEL TWO TIER WALL SHELF

Sizes(MM): 2400X600X850

- The commercial sinks can be customized to customers' requirements.
- A press type glass rinser, brush scrubber and high pressure spring loaded water faucet for rinsing can be added.



STAINLESS STEEL OPEN CABINET

Description: Made from heavy duty stainless steel. Ideal for use in food processing industry, horticulture, hospitals, hotels, and commercial kitchens.

Size(MM): 900x700x850, 1100x700x850, 1200x700x850, 1500x700x850, 1800x700x850, 2000x700x850, 2320x700x850.

- Castor Wheels can be added.
- Heating Cabinet



STAINLESS STEEL CABINET WITH SHELF AND SLIDING DOOR

Description: Made from heavy duty stainless steel. Ideal for use in food processing industry, horticulture, hospitals, hotels, and commercial kitchens.

Size(MM): 900x700x850, 1100x700x850, 1200x700x850, 1500x700x850, 1800x700x850, 2000x700x850, 2320x700x850.

- Castor Wheels can be added.
- Heating Cabinet



STAINLESS STEEL LOCKERS

Made from heavy duty stainless steel. Ideal for use in food processing industry, horticulture, hospitals, hotels, and commercial kitchens. Constructed from Stainless Steel Material of 1.5mm. Rack are available in Solid Shelves, Slated Shelves and Perforated Shelves. Available in various sizes as per customers' requirements



EXTINGUISHER CABINET

Description: A stainless steel extinguisher cabinet is a durable, corrosion-resistant storage solution designed to protect fire extinguishers in various environments. It features a sleek, clean design for easy access and safety compliance.

Size (mm): 457x 152x762



WALL CABINET

Description: The stainless steel wall cabinet is a space-saving storage solution ideal for kitchens, laboratories, and healthcare facilities. Made from high-grade stainless steel, it is corrosion-resistant, hygienic, and easy to clean. The cabinet features secure doors (hinged or sliding) and internal shelving to organize tools, utensils, or supplies efficiently. Its sturdy construction ensures long-lasting performance, while the wall-mounted design keeps floor space clear, promoting a clean and organized work environment.

Size (mm): sizes and custom designs

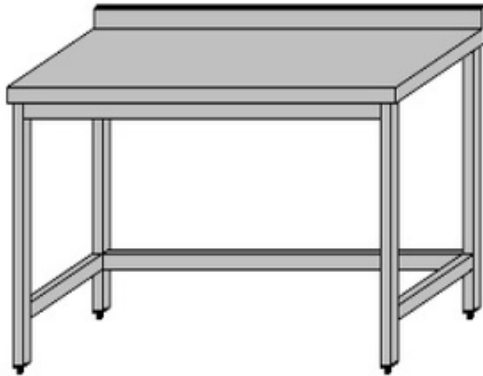


STAINLESS STEEL CONVEYER BELTS

The stainless steel conveyor belt is designed for strength, hygiene, and efficiency in industrial applications. Ideal for food processing, pharmaceuticals, and manufacturing, it offers excellent corrosion resistance and smooth product flow. Its durable, easy-to-clean surface ensures compliance with sanitary standards while delivering reliable, long-lasting performance in demanding environments.



STAINLESS STEEL WORK TABLE ON BRACES



Description: Made from heavy duty stainless steel. Ideal for use in food processing industry, horticulture, hospitals, hotels, and commercial kitchens. Stainless steel Square Tube legs of 1 ½" fitted with rubber grommets (Adjustable Feet / grommet option available). The tabletop is reinforced with a steel backing for added strength and noise deadening.

Sizes (MM): 900x600x850, 1100x600x850, 1200x600x850, 1500x600x850, 1800x600x850, 2000x600x850, 2320x600x850, 2320x1120x850, 900x700x850, 1100x700x850, 1100x700x850, 1500x700x850, 1800x700x850, 2000x700x850, 2320x700x850

- Fully customizable.
- Wheels can be added.

STAINLESS STEEL WORK TABLE ON WITH UNDER SHELF



Description: Made from heavy duty stainless steel. Ideal for use in food processing industry, horticulture, hospitals, hotels, and commercial kitchens. Stainless steel Square Tube legs of 1 ½" fitted with rubber grommets (Adjustable Feet / grommet option available). The tabletop is reinforced with a steel backing for added strength and noise deadening.

The number of undershelves is dependent on the customer needs

Sizes (MM): 900x600x850, 1100x600x850, 1200x600x850, 1500x600x850, 1800x600x850, 2000x600x850, 2320x600x850, 2320x1120x850, 900x700x850, 1100x700x850, 1200x700x850, 1800x700x850, 1500x700x850, 2000x700x850, 2320x700x850

- Fully customizable.
- Wheels can be added.



STAINLESS STEEL TABLE WITH DRAWERS AND UNDERSHELF

Description: The stainless steel table with drawers and undershelf offers durable, hygienic, and efficient workspace and storage for commercial kitchens, laboratories, and medical facilities. Made from high-quality stainless steel, it features a smooth worktop, built-in drawers for utensils or tools, and a sturdy undershelf for bulk storage. The corrosion-resistant surface is easy to clean, while the strong frame ensures long-term performance in demanding environments.

Sizes (MM): Custom sizes and drawer configurations



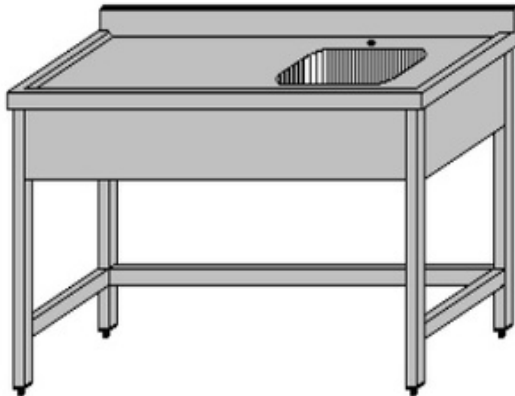
STAINLESS STEEL WORK TABLE ON WITH UNDER SHELF

Description: Made from heavy duty stainless steel. Ideal for use in food processing industry, horticulture, hospitals, hotels, and commercial kitchens. Stainless steel Square Tube legs of 1 1/2" fitted with rubber grommets (Adjustable Feet / grommet option available). The tabletop is reinforced with a steel backing for added strength and noise deadening.

The number of undershelves is dependent on the customer needs

Sizes (MM): 900x600x850, 1100x600x850, 1200x600x850, 1500x600x850, 1800x600x850, 2000x600x850, 2320x600x850, 2320x1120x850, 900x700x850, 1100x700x850, 1200x700x850, 1800x700x850, 1500x700x850, 2000x700x850, 2320x700x850

- Fully customizable.
- Wheels can be added.



STAINLESS STEEL SINGLE BOWL SINGLE DRAIN SINK

Size(MM): 800x600x850 1000x600x850
1200x600x850 1500x600x850 1800x600x850
2000x600x850 2400x600x850

- The commercial sinks can be customized to customers' requirements.
- A press type glass rinser, brush scrubber and high pressure spring-loaded water faucet for rinsing can be added.



STAINLESS STEEL DOUBLE BOWL SINGLE DRAIN SINK

Size(MM): 1200x600x850, 1500x600x850,
1800x600x850, 2000x600x850, 2400x600x850

- The commercial sinks can be customized to customers' requirements.
- a press type glass rinser, brush scrubber and high pressure spring-loaded water faucet for rinsing can be added.



PORTABLE STAINLESS STEEL HAND SANITIZATION SINK

Description: Mobile stainless steel sink unit with 40 litres inlet tank and 40 litres removable waste water tank. Ideal for handwashing. Can be moved to any location. No hand contact thus very hygienic.

Overall size: 700x700x850mm

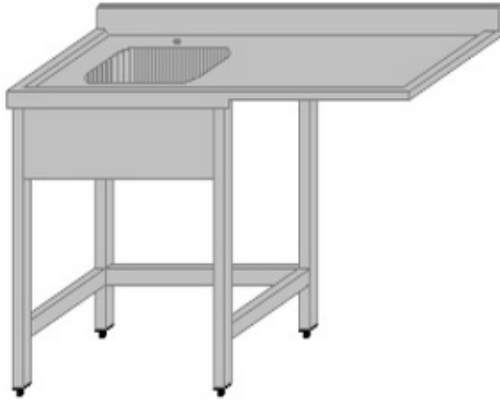
Bowl size: 380mm diameter

The unit has the following options:

- Manual hand wash dispenser 500ml with foot operated tap
- Sensor type hand wash dispenser 500ml with foot operated water tap
- Sensor type hand wash dispenser 500ml with sensor type water tap.

Optional extra:

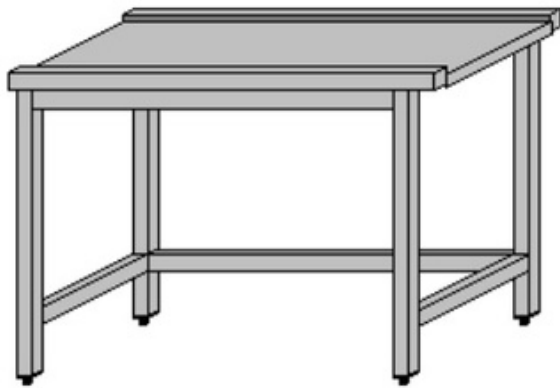
- Paper towel dispenser
- Pre-mix hot and cold water valve for water inlet



STAINLESS STEEL DISH WASHER INLET TABLE WITH SINGLE BOWL ON BRACES

Size(MM) 1200x600x850, 1500x600x850, 1800x600x850

- The commercial sinks can be customized to customers' requirements.



STAINLESS STEEL DISH WASHER OUTLET TABLE ON BRACES

Size(MM): 900x500x1800, 1100x500x1800, 1500x500x1800, 1800x500x1800, 2000x500x1800

- Fully customizable.
- Conveyer rollers can be added.



STAINLESS STEEL STORAGE TANKS

Description: A stainless steel storage tank is a durable, corrosion-resistant container designed for safely storing liquids, bulk ingredients, or food products. Constructed from high-quality stainless steel, it ensures hygiene, prevents contamination, and is easy to clean. Ideal for use in food processing, manufacturing, and storage environments.

Size (mm): 1000 x 1000 x 1500 (dimensions may vary depending on the model and capacity)



FOOD CARTS

Description: A stainless steel food cart is a durable, mobile solution designed for transporting and serving food in various settings, including restaurants, hospitals, and cafeterias. Constructed from high-quality stainless steel, it ensures easy maintenance, hygiene, and resistance to corrosion. These carts are equipped with multiple shelves or trays to organize and carry food, making them perfect for efficient food service.

Size (mm): 800 x 500 x 1000 (dimensions may vary depending on the model and design)



STAINLESS STEEL FOOD TRUCK

Description: Our stainless steel food truck is designed for durability and functionality, perfect for food vendors on the go. Built with high-quality stainless steel, it ensures hygiene, easy maintenance, and resistance to wear. It provides ample space for kitchen equipment and food preparation, making it ideal for food service in various settings.

We also supply interior equipment, including cooking appliances, storage solutions, and countertops, to fully equip your food truck for efficient service.



GASTRONOME CONTAINERS

Description: Stainless steel gastronome containers are custom-designed storage solutions tailored to specific needs within the food industry. Crafted from high-quality stainless steel, these containers offer durability, hygiene, and resistance to corrosion. They are perfect for storing, transporting, and organizing food items, ingredients, or liquids while ensuring compliance with food safety standards.

Size (mm): Custom sizes available (dimensions vary based on requirements and design specifications).



STAINLESS STEEL BAIN MARIE

Size: 1400x750x850MM

- With sneeze guard
- 4 full size gastronome containers and a hot cupboard
- Can be customized to your size



STAINLESS STEEL KITCHEN UNIT WITH GRANITE TOP/MARBLE TOP

Size customized to customers' requirements. Ideal for pastry and bread preparation. Can be used as display and server counters. Can be customized with doors and overhead shelves.





2 BURNER OPEN COOKER

Description: The 2-burner open cooker is a compact and efficient cooking solution for commercial kitchens, catering setups, and mobile food operations. Constructed with a heavy-duty stainless steel body, it offers durability, hygiene, and easy maintenance. Each high-performance burner delivers consistent heat for fast and reliable cooking. The open design allows for easy access and ventilation, making it suitable for continuous use. Its sturdy frame ensures stability, and it can be used with a range of cookware sizes.

Dimensions / Weight (mm/kg): Customer dependent



3-BURNER OPEN COOKER

Description: The 3-burner open cooker is designed for high-efficiency cooking in busy commercial kitchens, hotels, and catering environments. Built with a robust stainless steel frame, it offers excellent durability, hygiene, and ease of cleaning. Each burner provides powerful, even heat distribution, allowing multiple dishes to be prepared simultaneously. The open design ensures easy access, ventilation, and quick maintenance. Ideal for heavy-duty use, it features a stable base and is compatible with various cookware sizes.

Dimensions / Weight mm/kg: Custom configurations



STAINLESS STEEL HEATED BANQUETING TROLLEY

Description: The stainless steel banqueting trolley is designed for efficient storage and transportation of prepared food during events, banquets, and catering services. Constructed from high-grade stainless steel, it offers excellent heat retention, hygiene, and durability. The trolley features an insulated door, adjustable internal shelving, and lockable castors for mobility and safety. Ideal for keeping food warm and organized before service, it ensures seamless catering operations in high-demand environments.

Size (mm): Custom sizes and heating options



STAINLESS STEEL TANDOOR

Description: Engineered for authentic flavor and modern efficiency, this stainless steel tandoor is perfect for restaurants, catering services, and outdoor kitchens. Built from high-grade stainless steel, it ensures excellent heat retention and durability while delivering traditional tandoori cooking performance. Whether you're making naan, skewers, or grilled meats, this tandoor is built to handle it all.

Dimensions / Weight (mm/kg): Custom Size Available



FOOD TROLLEY

Description: The stainless steel food trolley is a durable, hygienic, and versatile solution for transporting meals in commercial kitchens, hospitals, and catering services. Built with food-grade stainless steel, it resists corrosion and is easy to clean. Smooth-rolling wheels and sturdy shelves ensure safe, efficient handling of food and kitchen supplies.

Dimensions / Weight (mm/kg): 900x700x900

- Three tiers are optional



SERVICE TROLLEY

Description: The stainless steel service trolley is ideal for transporting dishes, utensils, and supplies in restaurants, hotels, and hospitals. Crafted from durable, corrosion-resistant stainless steel, it offers easy cleaning and long-lasting use. With smooth-rolling casters and multiple shelves, it ensures efficient, quiet service in busy food and hospitality environments.

Dimensions / Weight mm/kg: 930x510x940

- Has an option of 3 tiers



RACK TROLLEY

Description: The stainless steel rack trolley is designed for efficient storage and transport of trays, pans, or containers in commercial kitchens, bakeries, and food processing facilities. Made from high-grade stainless steel, it is durable, corrosion-resistant, and easy to clean. Its multi-shelf design and smooth-rolling wheels ensure stability and mobility.

Dimensions / Weight mm/kg: 550x650x250,
550x650x850



PLATFORM TROLLEY

Description: The stainless steel platform trolley is built for heavy-duty transport in industrial, commercial, and healthcare settings. Featuring a flat, spacious platform and robust frame, it allows easy movement of bulky items. Corrosion-resistant and easy to clean, it includes ergonomic handles and smooth-rolling wheels for safe and efficient handling.

Dimensions / Weight (mm/kg): 900x700x900

- Has a raised option
- With 4 swivel castors. Ø125mm
- Two of them can be locked.



CLEARING TROLLEY

Description: The stainless steel clearing trolley is ideal for efficient removal of used dishes and waste in restaurants, hotels, and catering environments. Designed with multiple tiers and easy-to-clean surfaces, it ensures hygienic operation. Durable, corrosion-resistant, and fitted with smooth casters, it allows quiet, hassle-free transport in busy service areas.

Dimensions / Weight mm/kg: 850x550x900



FLOUR AND SUGAR TROLLEY

Description: The stainless steel flour and sugar trolley is designed for safe, hygienic storage and transport of bulk dry ingredients in bakeries and food production areas. Its deep, lidded compartments protect contents from contamination, while heavy-duty casters ensure smooth mobility. Durable, corrosion-resistant, and easy to clean, it supports efficient kitchen operations.

Dimensions / Weight mm/kg: 535x540x420, 735x540x530 (round edges)

Bowl: 700x500x400 mm for the round edged one

- With 4 swivel castors.



HOT MEAL DISTRIBUTION TROLLEY

Description: A hot meal distribution trolley is a mobile, stainless steel unit designed to transport and serve hot meals in hospitals, cafeterias, or catering environments. Equipped with insulated compartments, it maintains food temperature during transport. The durable, easy-to-clean surface ensures hygiene, while its smooth-rolling wheels allow for easy maneuverability.

Dimensions / Weight (mm/kg): 1100x750x900



WASTE TROLLEY

Description: A stainless steel waste trolley is a durable and efficient solution for waste management in commercial kitchens, hospitals, or industrial settings. Designed with multiple compartments for sorting and collecting waste, it ensures proper disposal. Its easy-to-clean surface and sturdy construction promote hygiene and safe handling of waste materials.

Dimensions / Weight mm/kg: Ø400×500



MEAT HANGING TROLLEY

Description: A stainless steel meat hanging trolley is designed for the safe and hygienic storage and transportation of meat in commercial kitchens or butcher shops. Featuring durable hooks or bars for hanging cuts of meat, it ensures proper airflow and prevents contamination. The trolley's easy-to-clean surface maintains sanitation and efficiency.

Dimensions / Weight mm/kg: 1500x600x1600



BOWL TROLLEY

Description: A stainless steel bowl trolley is a mobile, durable storage solution used to transport and organize bowls in commercial kitchens or foodservice environments. Designed with multiple shelves or compartments, it keeps bowls secure and easily accessible. Its easy-to-clean surface ensures hygiene, while smooth-rolling wheels provide effortless mobility.

Dimensions / Weight (mm/kg): 900x700x900



VEGETABLE WASHER TROLLEY

Description: A stainless steel vegetable washer trolley is designed for efficiently washing and transporting vegetables in commercial kitchens or food processing environments. Equipped with a built-in washing basin and durable, easy-to-clean surface, it ensures proper sanitation. Its mobile design with smooth-rolling wheels allows for easy movement and organization in food preparation areas.

Dimensions / Weight mm/kg: 800x850x900



DISH TROLLEY

Description: A stainless steel dish trolley is a durable, mobile cart designed to transport and organize dirty or clean dishes in commercial kitchens or dining areas. Equipped with multiple compartments or racks, it keeps dishes secure and easily accessible. Its easy-to-clean surface ensures hygiene, while smooth-rolling wheels allow for effortless mobility.

Dimensions / Weight mm/kg: 600x780x1685



TALL BOY TROLLEY

Description: The stainless steel tall boy trolley is designed for the safe and organized transport of plates in hotels, restaurants, and catering setups. Featuring tiered or vertical slots, it securely holds plates in place during movement. Made from durable, food-grade stainless steel, it is corrosion-resistant, easy to clean, and built for heavy use.

Dimensions / Weight (mm/kg): 900x900x800



BASKET TROLLEY

Description: The stainless steel basket trolley is ideal for transporting baskets filled with dishes, utensils, or food items in commercial kitchens, hospitals, and catering services. Its open-frame design allows easy loading and unloading, while durable stainless steel construction ensures hygiene and long-lasting performance. Smooth-rolling casters provide effortless mobility in busy environments.

Dimensions / Weight mm/kg: 560x550x1600

- Designed for carrying trays.
- With 4 swivel castors.
- Two of them can be locked. Ø125 mm
- Dimensions include bumpers.



CONTAINER TROLLEY

Description: The stainless steel container trolley is designed for the efficient transport of containers holding food, ingredients, or supplies in commercial kitchens, hospitals, and industrial settings. Built with a strong, corrosion-resistant frame, it ensures durability and hygiene. Easy to clean and maneuver, it features secure supports and smooth-rolling wheels for stability.

Dimensions / Weight mm/kg: 420x630x1730, 820x630x1730

- Has an extra column on request
- With 4 swivel castors. Two of them can be locked Ø 125 mm
- Dimensions include bumpers
- No of pairs of support rails: 15
- Clearance from rail to rail: 80 mm



STAINLESS STEEL URINAL

General Specifications: Made of stainless steel. Allows easy carrying with stretchers and rails. Fully insulated. Digital control system. Easy to transport and exchange with heavy wheels. Maximum efficiency with minimum energy consumption. Two-and three-cell model is front-and side drop-down options.

Dimensions / Weight (mm/kg): 900x3102x2113/610



STAINLESS STEEL TROUGH

Description: Stainless steel hand washing trough with sensor type hand sanitizer, sensor type tap and paper towel dispenser.

- Available for 1, 2, 3 or 4 persons.
- Fully customizable to customers' requirements.



STAINLESS STEEL SLUICE SINK

Description: Custom made Stainless Steel Sluice sink/slope hopper/ hospital disposable unit. Designed for use in hospitals, clinics, surgeries and any medical facilities. Ideal for disposal of clinical waste e.g drainage bags and bed pans.

Size: 1800x600mm and can be provided with a cistern.



STAINLESS STEEL SPIRAL BREAD CHUTE



The Stainless Steel Spiral Bread Chute is designed for the smooth, controlled descent of bread products from elevated conveyors to lower levels, minimizing impact and preserving product integrity. Fabricated from high-grade stainless steel, it ensures durability, hygiene, and compliance with food industry standards.

Key Features:

- **Precision Engineering** – Spiral design facilitates gentle product handling, reducing breakage and deformation.
- **Hygienic Construction** – Made from 304/316 stainless steel, resistant to corrosion and easy to clean.
- **Customizable Design** – Available in various diameters and angles to suit different production line requirements.
- **Seamless Integration** – Designed for effortless incorporation into existing bakery automation systems.
- **Low Maintenance** – Non-stick surfaces and minimal moving parts ensure longevity with reduced maintenance needs.

Project Scope – SSP Initiative

As part of SSP's commitment to innovative bakery solutions, this Spiral Bread Chute was developed to enhance efficiency in high-speed bread production lines. By optimizing product flow and reducing manual handling, it supports hygienic, streamlined, and cost-effective operations. For more information or customization inquiries, contact SSP Solutions today.





RIGID DUCTS

Material: 304 or 316 stainless steel

Best for: High-heat and grease-laden environments

Advantages: Fire-resistant, easy to clean, and highly durable

Common Uses: Kitchen exhaust, grease ducts, and hood ventilation systems





MEDICAL EQUIPMENT

SSP provides high-quality stainless steel solutions tailored for the medical industry, including precision-engineered components, custom fabrications, and specialized surface finishing for medical equipment. Our products are designed to meet the strict hygiene, durability, and safety standards required in healthcare environments, ensuring reliable performance in surgical, diagnostic, and laboratory applications.



STAINLESS STEEL HOSPITAL FOOD TROLLEY FOR WARDS

Made from Stainless Steel Material Electric Heated. Heated water well to keep food warm with a heating a cabinet mounted on heavy duty castor wheels

Size: 750 x 700 x900



STAINLESS STEEL TROLLEY

We have a wide and comprehensive range of stainless steel trolleys for use in all medical facilities. Our range includes:

- General purpose trolley.
- Dressing trolleys.
- Mayos trolleys.
- Instrument trolleys.
- Kick buckets.
- Bowl stands.

For use in commercial kitchens, our range includes:

- General purpose trolleys.
- Pallet trolleys.
- Tall bow trolleys.
- Banquet trolleys.
- Distribution and collection trolleys.

They can be customized to customers' needs.

Standard size: 600x800x945mm



CUSTOM MADE DRY OR WET LINEN TROLLEY

Ideal for use in hospitals and areas of high turnover linen. Customizable to customers' requirements. Mounted on a stainless steel frame with washable canvas material.





STAINLESS STEEL SLUICE SINK

Description: Custom made Stainless Steel Sluice sink/slope hopper/ hospital disposable unit. Designed for use in hospitals, clinics, surgeries and any medical facilities. Ideal for disposal of clinical waste e.g drainage bags and bed pans. Size: 1800x600mm and can be provided with a cistern.



BABY WASHING UNIT

Description: A stainless steel baby washing unit is designed for the safe and hygienic bathing of newborns in healthcare settings. It features a smooth, easy-to-clean surface with a comfortable basin, ensuring proper support and safety during the washing process. Built to withstand frequent use, it maintains high sanitation standards.

Dimensions / Weight mm/kg: 1600x700x850/62



DOCTOR HAND WASHER

Description: A stainless steel doctor hand washer is a high-quality, durable sink designed for medical professionals to maintain hygiene before procedures. Equipped with a foot pedal or automatic sensors for hands-free operation, it ensures a sterile and efficient handwashing process. Its sleek, easy-to-clean surface promotes sanitation in healthcare environments.

Dimensions / Weight mm/kg: 800x700x1250/35



PORTABLE STAINLESS STEEL HAND SANITIZATION SINK

Description: Mobile stainless steel sink unit with 40 litres inlet tank and 40 litres removable waste water tank. Ideal for handwashing. Can be moved to any location. No hand contact thus very hygienic.

Overall size: 700x700x850mm

Bowl size: 380mm diameter

The unit has the following options:

- Manual hand wash dispenser 500ml with foot operated tap
- Sensor type hand wash dispenser 500ml with foot operated water tap
- Sensor type hand wash dispenser 500ml with sensor type water tap.

Optional extra:

- Paper towel dispenser
- Pre-mix hot and cold water valve for water inlet



STAINLESS STEEL TROUGH

Description: Stainless steel hand washing trough with sensor type hand sanitizer, sensor type tap and paper towel dispenser.

- Available for 1, 2, 3 or 4 persons.
- Fully customizable to customers' requirements.



SCRUB UP UNIT

Description: Designed for durability and hygiene, this scrub sink is crafted from medical-grade 304 stainless steel, making it highly resistant to chemicals and cleaning agents. Ideal for surgical and clinical environments, it meets the strict sanitation standards required in healthcare settings.

Material: Stainless Steel 304

Size: Customizable to client specifications



MORGUE UNIT

General Specifications: Made of stainless steel. Allows easy carrying with stretchers and rails. Fully insulated. Digital control system. Easy to transport and exchange with heavy wheels. Maximum efficiency with minimum energy consumption. Two-and three-cell model is front-and side drop-down options.

Dimensions / Weight (mm/kg): 900x3102x2113/610



STAINLESS STEEL MORGUE TRAY

Description: The stainless steel morgue tray is designed for use in mortuaries, hospitals, and forensic facilities. Constructed from high-quality, corrosion-resistant stainless steel, it offers superior hygiene, strength, and ease of cleaning. The tray features raised edges for fluid containment and reinforced structure for safe handling and secure placement during transport or examination.

- The size is dependent on customer requirements



GASIL TABLE WITH SINK

Description: A stainless steel gasil table with sink is a specialized medical table designed for efficient surgical or examination procedures. It features a built-in sink for easy handwashing or instrument cleaning during operations. The durable, easy-to-clean surface ensures hygiene, while its robust design provides a stable work area for medical staff.

Dimensions / Weight (mm/kg): 2700x1000x850/80



OPERATING ROOM CABINET

Dimensions / Weight (mm/kg): 700x600x1750/105

Description: Durable and hygienic storage solution designed for healthcare environments. Made from high-quality stainless steel, it resists corrosion, stains, and bacteria buildup, ensuring a clean and sterile environment. These cabinets are designed to store medical instruments, supplies, and equipment, keeping them organized and easily accessible during surgical procedures.



ICU BED END TROLLEY / ICU CHART TROLLEY

Description: ICU Chart Trolley, for storage of Medication and ICU Supplies, including patient storage cabinet, purposely built to stand by the end of every ICU Bed in Hospitals. Features sleek, elegant and durable design, manufactured from white epoxy coated steel. Includes a sloping top manufactured from covered Formica wood top, allowing comfortable writing surface for a large ICU Chart, while still allowing visibility of the patient. Includes:

- 1 shelf under writing surface.
- Closed on 3 sides.
- 4 pull out drawers on the left-hand side.
- 1 locker on right hand side which consists of 1 pull out drawer and locker with shelf inside and door catch.

Mounted on 4 x Grey Rubber Tente 75mm castors, of which 2x are locking 2x swivel. 32 mm aluminum lip at the bottom of writing surface to prevent chart slipping. Frame manufactured from 32mm square tube frame- epoxy powder coated. Includes a sharps container bracket, a d-germ/soap dispenser bracket, and a pen holder on the right side. Includes a file and X-ray chart board holder on left side.

Size: 1000X540X900mm



INSTRUMENT TABLE

Description: A stainless steel instrument table is a versatile, durable piece of medical furniture designed for surgical procedures. Featuring a smooth, easy-to-clean surface, it provides a stable platform for holding medical instruments and supplies during surgery.

Dimensions / Weight (mm/kg): 750 x 700 x900



MEDICINE CABINET

Description: A stainless steel medicine cabinet is a secure and durable storage solution designed for medical environments. It features multiple shelves for organizing medications, supplies, and instruments, keeping them easily accessible and safe. The cabinet's smooth, easy-to-clean surface ensures optimal hygiene, and locking mechanisms maintain security and prevent unauthorized access.

Dimensions / Weight mm/kg: 1000x500x1800/110



MAYO TABLE

Description: A stainless steel Mayo table is a versatile, movable surgical table used to hold instruments and supplies during medical procedures. With adjustable height and a smooth, easy-to-clean surface, it ensures convenience and hygiene in sterile environments. Its sturdy construction and compact design make it ideal for operating rooms and clinics.

Dimensions / Weight mm/kg: 850x530x1250/18



WASTE BINS

General Specifications: For entire sterilization required centers. Grade 304 stainless steel. Custom made production in different sizes and designs

Dimensions / Weight (mm/LT): 250x250x800, 40



IV STAND

Description: The stainless steel morgue tray is designed for use in mortuaries, hospitals, and forensic facilities. Constructed from high-quality, corrosion-resistant stainless steel, it offers superior hygiene, strength, and ease of cleaning. The tray features raised edges for fluid containment and reinforced structure for safe handling and secure placement during transport or examination.

- The size is dependent on customer requirements



WARD SCREEN

Description: The ward screen provides privacy and separation in medical wards, clinics, and examination rooms. Constructed with a sturdy stainless steel frame and high-quality, washable canvas or antimicrobial fabric panels, it is durable, easy to clean, and foldable for convenient storage. Smooth-rolling casters ensure easy mobility and positioning

Size: 1800x625x1800

Total Width (extended): approx. 2000–2250 mm depending on panel angle



STAINLESS STEEL WARD BED

Description: The stainless steel ward bed is designed for durability, hygiene, and patient comfort in hospitals and medical facilities. Constructed from high-quality stainless steel, it resists corrosion and is easy to clean, making it ideal for high-demand environments. It typically features a perforated or solid metal top, adjustable backrest (optional), and reinforced legs for stability. Available with or without side rails and castors for mobility.

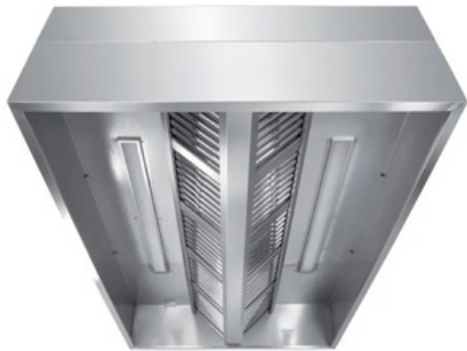
Dimensions: 2000x900 x600



A photograph of a stainless steel exhaust hood in a laboratory or medical setting. The hood has a series of slats on the front and is mounted on a wall. Below the hood, there is a stainless steel countertop with various pieces of equipment, including a sink and a control panel with a dial and buttons. The background shows more of the laboratory environment, including shelves and other equipment.

HOODS & EXHAUST SYSTEMS

Stainless steel exhaust systems are durable, corrosion-resistant, and designed to efficiently remove airborne contaminants in medical environments.



CENTER TYPE HOOD

Description: The Center-Type Hood is designed for island-style or open kitchen setups where equipment is centrally positioned. Suspended from the ceiling, it offers 360-degree ventilation coverage, effectively capturing smoke, grease, and odors from all sides. Its stainless steel build ensures durability, hygiene, and easy cleaning. Ideal for culinary schools, hotels, and show kitchens, the hood integrates with fire suppression and lighting systems. With its open design and strong performance, it enhances both aesthetics and air quality. SSP's center-type hoods are tailored for high-visibility cooking areas, offering powerful ventilation in dynamic kitchen layouts.

Dimensions / Weight (mm/kg): Dependent on client needs



BOX TYPE HOOD

Description: The Box Hood is a compact, wall-mounted ventilation unit designed for efficient smoke and grease extraction in smaller or enclosed kitchen areas. Its boxed structure offers focused suction directly over cooking equipment, minimizing air contamination. Built from stainless steel, it's durable, hygienic, and easy to maintain. Ideal for kitchens with limited overhead space, the box hood integrates seamlessly with ductwork and fire suppression systems. It's perfect for low to moderate cooking volumes and ensures compliance with safety and hygiene standards. SSP's box hoods are available in custom sizes, providing reliable performance and space-saving ventilation for professional cooking environments.

Dimensions / Weight mm/kg: Dependent on client needs



CANOPY TYPE HOOD

Description: The Canopy Hood is a heavy-duty ventilation solution designed for high-performance kitchens. Installed above cooklines, it features a wide capture area to efficiently remove smoke, heat, steam, and airborne grease. Made from food-grade stainless steel, it offers superior durability, hygiene, and fire safety compliance. The canopy hood accommodates integrated lighting, grease filters, and fire suppression systems for full operational functionality. Ideal for restaurants, hotels, and institutions, it's customizable to meet specific layout and airflow needs. SSP's canopy hoods deliver reliable performance and clean air, helping maintain a safe, comfortable, and code-compliant cooking environment.

Dimensions / Weight mm/kg: Dependent on client needs



GREASE DUCTS

Material: 304 stainless steel with welded seams for fire safety

Best for: Exhausting grease-laden air

Advantages: High-temperature resistance, fire code compliant, and long-lasting

Common Uses: Ventilation systems in restaurants, hotels, and food processing plants



HOOD LIGHTINGS

Description: Hood lighting refers to the lighting systems installed within or around kitchen exhaust hoods. These lights serve the purpose of illuminating the cooking area below the range hood, providing better visibility for cooking, cleaning, and food preparation tasks. Hood lighting is particularly common in commercial kitchens, restaurants, and residential kitchens, ensuring a safe and efficient working environment.



EXTRACTION FAN

Description: An extractor fan, also known as an exhaust fan or ventilation fan, is a mechanical device designed to remove unwanted air, fumes, moisture, heat, or odors from an enclosed space. Its primary purpose is to improve air quality by drawing stale or contaminated air out of a room, which helps maintain a comfortable and healthy environment.



INDUSTRIAL CENTRIFUGAL FAN

Description: The Industrial Centrifugal Fans, featuring a robust 1.5KW motor and a steady 1400 RPM operation, are purpose-built for efficient air movement and ventilation in industrial environments. These centrifugal fans provide reliable and powerful airflow, making them an indispensable component in settings where effective air circulation is essential for maintaining optimal working conditions and equipment performance.



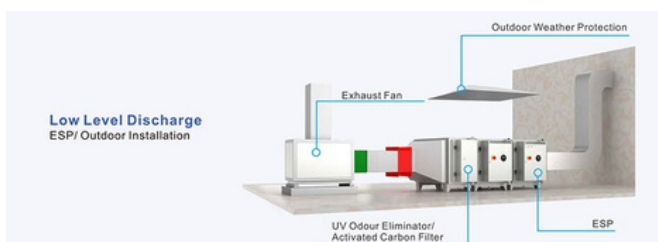
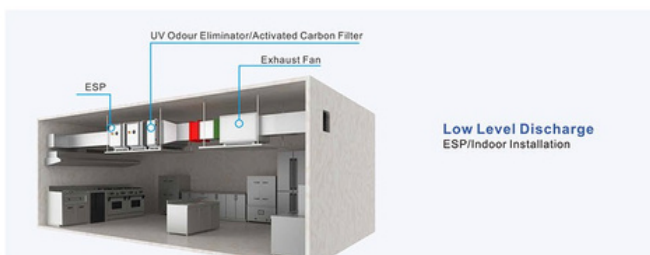
HOOD FILTER

Description: It captures grease, smoke, and airborne particles, preventing them from entering the ventilation system. Made from durable, easy-to-clean stainless steel, it ensures efficient airflow, maintains hygiene, and helps reduce fire hazards by trapping grease buildup.

Dimensions / Weight mm/kg: 400x500x20



AIR PURIFYING SYSTEMS



Description: An air purifier is a powerful solution for improving air quality in commercial kitchens by removing pollutants, odors, and chemicals.

Activated charcoal effectively traps contaminants such as volatile organic compounds (VOCs), smoke, cooking smells, and grease, making it ideal for high-traffic cooking environments where air quality can quickly degrade.

These air purifiers can be installed either indoors or outdoors, depending on the kitchen's setup.

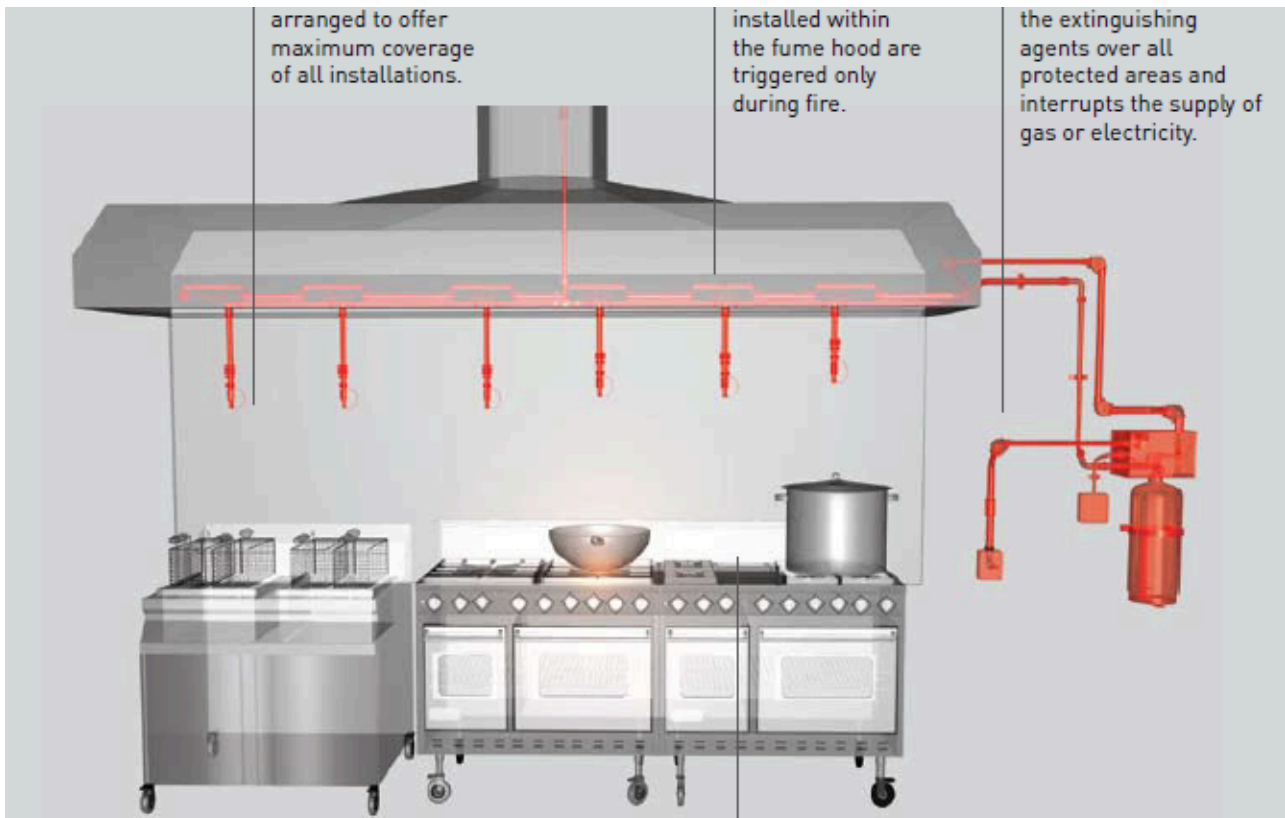
Indoors, they help maintain a clean, breathable environment despite the constant cooking, reducing smoke and food odors that can linger in the air. The activated charcoal filter absorbs unpleasant smells and pollutants, creating a healthier atmosphere for kitchen staff and providing a more comfortable experience for customers.

For outdoor kitchens or dining areas, the air purifier with activated charcoal effectively handles smoke, cooking odors, and pollutants from the surrounding environment. The charcoal's ability to eliminate odors ensures the air remains fresh, even in open-air grill areas or outdoor cooking spaces.

With adjustable fan speeds, portability, and energy-efficient designs, these air purifiers are versatile and practical, making them a vital addition to both indoor and outdoor commercial kitchen installations. They help maintain optimal air quality, reduce grease buildup, and keep the environment fresh and clean.



FIRE SUPPRESSION SYTEM



Description: The Fire Suppression System is engineered for rapid fire detection and suppression, ensuring maximum safety in industrial and commercial environments. Designed for fast response and minimal downtime, it effectively controls fires before they spread, protecting equipment, products, and personnel.

Key Features:

- Advanced Fire Detection – Uses heat and smoke sensors for quick activation.
- Efficient Suppression Agents – Options include water mist, foam, gas, or dry chemicals.
- Automatic & Manual Activation – Ensures flexibility in emergency situations.
- Reliable & Compliant – Meets international fire safety standards.
- Customizable Solutions – Designed to fit various facility needs and hazards.

As part of SSP's safety initiatives, this system enhances fire protection, reduces risk, and ensures uninterrupted operations.



LAUNDRY

SSP offers durable stainless steel laundry equipment, including washers and dryers, for commercial settings requiring efficiency



VLWE13E – WASHER EXTRACTORS

Models: VLWE13E

DIMENSIONS / WEIGHT: 880x900x1570 / 480

ELECTRIC POWER: 9.000

MOTOR POWER: 2.2000.

DRUM CAPACITY: 131-13

PACK. DIM. / GROSS WEIGHT MM/KG: 920x940x1620 / 495

Description: AISI 304 quality stainless steel cabinet. Touch screen digital control. Up to 99 programming option with pre-set 25 standard programs. Resumable programmed against power outage. Frequency controlled motor, 300 G spin cycle. Hot & cold water inlet, Saves on energy & water consumption.

Standard liquid soap connections, , Anti-foam system, 3,5 & 6 layered detergent dispenser for washing powder and liquid soap. Wide loading/unloading door and cone-shaped drum surface ensures, easy to access, Loading / Unloading door safety switch. Possibility of fixing onto ground, Electric heating system, Anti-vibration suspension system, Electrostatic painted steel frame, Waterproof electrical box.



VLWE20E – WASHER EXTRACTOR

Models: VLWE20E

DIMENSIONS / WEIGHT: 995x1075x1720 / 713

ELECTRIC POWER: 12.000

MOTOR POWER: 3.000

DRUM CAPACITY: 216-20

PACK. DIM. / GROSS WEIGHT MM/KG: 1035x1175x1770 / 730

Description: AISI 304 quality stainless steel cabinet. Touch screen digital control. Up to 99 programming option with pre-set 25 standard programs. Resumable programmed against power outage. Frequency controlled motor, 300 G spin cycle. Hot & cold water inlet, Saves on energy & water consumption.

Standard liquid soap connections, , Anti-foam system, 3,5 & 6 layered detergent dispenser for washing powder and liquid soap. Wide loading/unloading door and cone-shaped drum surface ensures, easy to access, Loading / Unloading door safety switch. Possibility of fixing onto ground, Electric heating system, Anti-vibration suspension system, Electrostatic painted steel frame, Waterproof electrical box.





VLWE30E – WASHER EXTRACTOR

Models: VLWE30E

DIMENSIONS / WEIGHT: 1135x1335x1870 / 1030

ELECTRIC POWER: 18.000

MOTOR POWER: 4.000.

DRUM CAPACITY: 309-30

PACK. DIM. / GROSS WEIGHT MM/KG: 1175x1375x1920/ 1.055

Description: AISI 304 quality stainless steel cabinet. Touch screen digital control. Up to 99 programming option with pre-set 25 standard programs. Resumable programmed against power outage. Frequency controlled motor, 300 G spin cycle. Hot & cold water inlet, Saves on energy & water consumption.

Standard liquid soap connections, , Anti-foam system, 3,5 & 6 layered detergent dispenser for washing powder and liquid soap. Wide loading/unloading door and cone-shaped drum surface ensures, easy to access, Loading / Unloading door safety switch. Possibility of fixing onto ground, Electric heating system, Anti-vibration suspension system, Electrostatic painted steel frame, Waterproof electrical box.



VLWE40E – WASHER EXTRACTOR

Models: VLWE40E

DIMENSIONS / WEIGHT: 1135x1505x1870 / 1420

ELECTRIC POWER: 18.000

MOTOR POWER: 5.500

DRUM CAPACITY: 425-40

PACK. DIM. / GROSS WEIGHT MM/KG: 1175x1545x1920/ 1.445

Description: AISI 304 quality stainless steel cabinet. Touch screen digital control. Up to 99 programming option with pre-set 25 standard programs. Resumable programmed against power outage. Frequency controlled motor, 300 G spin cycle. Hot & cold water inlet, Saves on energy & water consumption.

Standard liquid soap connections, , Anti-foam system, 3,5 & 6 layered detergent dispenser for washing powder and liquid soap. Wide loading/unloading door and cone-shaped drum surface ensures, easy to access, Loading / Unloading door safety switch. Possibility of fixing onto ground, Electric heating system, Anti-vibration suspension system, Electrostatic painted steel frame, Waterproof electrical box.





VLWE60E – WASHER EXTRACTOR

Models: VLWE60E

DIMENSIONS / WEIGHT: 1585x1780x2070 / 2250

ELECTRIC POWER: 36.000

MOTOR POWER: 11.000.

DRUM CAPACITY: 631-60

PACK. DIM. / GROSS WEIGHT MM/KG: 1605x1820x2120 / 2.290

Description: AISI 304 quality stainless steel cabinet. Touch screen digital control. Up to 99 programming option with pre-set 25 standard programs. Resumable programmed against power outage. Frequency controlled motor, 300 G spin cycle. Hot & cold water inlet, Saves on energy & water consumption.

Standard liquid soap connections, , Anti-foam system, 3,5 & 6 layered detergent dispenser for washing powder and liquid soap. Wide loading/unloading door and cone-shaped drum surface ensures, easy to access, Loading / Unloading door safety switch. Possibility of fixing onto ground, Electric heating system, Anti-vibration suspension system, Electrostatic painted steel frame, Waterproof electrical box.





VLTD15 – TUMBLE DRYER

Models: VLTD15

Dimensions / Weight: 1085x975x1720/ 390

Electric power: 15.0

Motor power: 750

Drum capacity: 309-15

Pack. Dim. / Gross Weight mm/kg: 1125x1015x1770/ 310

Description: Electrostatic painted steel frame, AISI 304 quality stainless steel drum, AISI 304 quality loading/unloading lid. Program and temperature indicator, Resumable programmed against to power outage, 10 Programs, Ceramic wool insulated drum to prevent heat loss. Reversing drum, The wide, easy-to-reach air filter, Electrostatic painted exterior body. High / Low drying cycle (40 RPM – 28 RPM), Loading / Unloading door safety switch, Cool down system



VLTD20 – TUMBLE DRYER

Models: VLTD20

Dimensions / Weight: 1085x1180x1720/ 390

Electric power: 18.0

Motor power: 750

Drum capacity: 425-20

Pack. Dim. / Gross Weight mm/kg: 1125x1220x1770/ 410

Description: Electrostatic painted steel frame, AISI 304 quality stainless steel drum, AISI 304 quality loading/unloading lid. Program and temperature indicator, Resumable programmed against to power outage, 10 Programs, Ceramic wool insulated drum to prevent heat loss. Reversing drum, The wide, easy-to-reach air filter, Electrostatic painted exterior body. High / Low drying cycle (40 RPM – 28 RPM), Loading / Unloading door safety switch, Cool down system



VLTD30 – TUMBLE DRYER

Models: VLTD30

Dimensions / Weight: 1305x1230x1920/ 480

Electric power: 25.9

Motor power: 1.500

Drum capacity: 63l-30

Pack. Dim. / Gross Weight mm/kg: 1345x1270x1970/ 505

Description: Electrostatic painted steel frame, AISI 304 quality stainless steel drum, AISI 304 quality loading/unloading lid. Program and temperature indicator, Resumable programmed against to power outage, 10 Programs, Ceramic wool insulated drum to prevent heat loss. Reversing drum, The wide, easy-to-reach air filter, Electrostatic painted exterior body. High / Low drying cycle (40 RPM – 28 RPM), Loading / Unloading door safety switch, Cool down system



VLTD40 – TUMBLE DRYER

Models: VLTD40

Dimensions / Weight: 1305x1470x1920/ 600

Electric power: 32.4

Motor power: 1.500

Drum capacity: 83l-40

Pack. Dim. / Gross Weight mm/kg: 1345x1510x1970/ 630

Description: Electrostatic painted steel frame, AISI 304 quality stainless steel drum, AISI 304 quality loading/unloading lid. Program and temperature indicator, Resumable programmed against to power outage, 10 Programs, Ceramic wool insulated drum to prevent heat loss. Reversing drum, The wide, easy-to-reach air filter, Electrostatic painted exterior body. High / Low drying cycle (40 RPM – 28 RPM), Loading / Unloading door safety switch, Cool down system



VLTD60 – TUMBLE DRYER

Models: VLTD60

Dimensions / Weight: 1455x1735x1980 / 1.090

Electric power: 32.4

Motor power: 2.200

Drum capacity: 1206-60

Pack. Dim. / Gross Weight mm/kg: 1495x1775x2030 / 1.125

Description: Electrostatic painted steel frame, AISI 304 quality stainless steel drum, AISI 304 quality loading/unloading lid. Program and temperature indicator, Resumable programmed against to power outage, 10 Programs, Ceramic wool insulated drum to prevent heat loss. Reversing drum, The wide, easy-to-reach air filter, Electrostatic painted exterior body. High / Low drying cycle (40 RPM – 28 RPM), Loading / Unloading door safety switch, Cool down system



VLRI32150 – ROLLER IRONER WITH DRYER BAND

Models: VLRI32150

Dimensions / Weight: 2250x1020x1170/ 653

Roller dimensions: 550x1500

Electric power: 12.6

Drum capacity: 750

Pack. Dim. / Gross Weight mm/kg: 2300x1070x1220/ 663

Description: Galvanized plating cylinder for better heat conduction, Reversing cylinder. Hood for humidity and steam discharge. Finger protection and emergency button for more safety. Protection cover for all electrical components. Up to 220 °C durable NOMEX ironing belts



VLRI32180– ROLLER IRONER WITH DRYER BAND

Models: VLRI32180

Dimensions / Weight: 2550x1020x1170/ 800

Roller dimensions: 320x1800

Electric power: 15.3

Drum capacity: 750

Pack. Dim. / Gross Weight mm/kg: 2600x1070x1220/ 810

Description: Galvanized plating cylinder for better heat conduction, Reversing cylinder. Hood for humidity and steam discharge. Finger protection and emergency button for more safety. Protection cover for all electrical components. Up to 220 °C durable NOMEX ironing belts



VLRI55150 – ROLLER IRONER WITH DRYER BAND

Models: VLRI55150

Dimensions / Weight: 2250x1200x1500/ 1.185

Roller dimensions: 550x1500

Electric power: 21.0

Drum capacity: 750

Pack. Dim. / Gross Weight mm/kg: 2300x1250x1550/ 1.200

Description: Galvanized plating cylinder for better heat conduction, Reversing cylinder. Hood for humidity and steam discharge. Finger protection and emergency button for more safety. Protection cover for all electrical components. Up to 220 °C durable NOMEX ironing belts



VLRI55180 – ROLLER IRONER WITH DRYER BAND

Models: VLRI55180

Dimensions / Weight: 2550x1200x1500/ 1.280

Roller dimensions: 550x1800

Electric power: 24.0

Drum capacity: 1.100

Pack. Dim. / Gross Weight mm/kg: 2600x1250x1550/ 1.300

Description: Galvanized plating cylinder for better heat conduction, Reversing cylinder. Hood for humidity and steam discharge. Finger protection and emergency button for more safety. Protection cover for all electrical components. Up to 220 °C durable NOMEX ironing belts



VLRI55200 – ROLLER IRONER WITH DRYER BAND

Models: VLRI55200

Dimensions / Weight: 2750x1300x1500/ 1.340

Roller dimensions: 550×2000

Electric power: 27.0

Drum capacity: 1.100

Pack. Dim. / Gross Weight mm/kg: 2800x1250x1550/ 1.360

Description: Galvanized plating cylinder for better heat conduction, Reversing cylinder. Hood for humidity and steam discharge. Finger protection and emergency button for more safety. Protection cover for all electrical components. Up to 220 °C durable NOMEX ironing belts



VLRI60180 – ROLLER IRONER WITH DRYER BAND

Models: VLRI60180

Dimensions / Weight: 2550x1300x1700/ 1.350

Roller dimensions: 600×1800

Electric power: 24.5

Drum capacity: 1.100

Pack. Dim. / Gross Weight mm/kg: 2600x1350x1750/ 1.370

Description: Galvanized plating cylinder for better heat conduction, Reversing cylinder. Hood for humidity and steam discharge. Finger protection and emergency button for more safety. Protection cover for all electrical components. Up to 220 °C durable NOMEX ironing belts



VLRI60200 – ROLLER IRONER WITH DRYER BAND

Model: VLRI60200

Dimensions / Weight: 2750x1300x1700/ 1.420

Roller dimensions: 600x2000

Electric power: 27.0

Drum capacity: 1,100

Pack. Dim. / Gross Weight mm/kg: 2800x1350x1750/ 1.440

Description: Galvanized plating cylinder for better heat conduction, Reversing cylinder. Hood for humidity and steam discharge. Finger protection and emergency button for more safety. Protection cover for all electrical components. Up to 220 °C durable NOMEX ironing belts



VLRI75200 – ROLLER IRONER WITH DRYER BAND

Model: VLRI75200

Dimensions / Weight: 3500x1500x1800/ 1.730

Roller dimensions: 750x2000

Electric power: 28.5

Drum capacity: 1.500

Pack. Dim. / Gross Weight mm/kg: 3050x1630x1950/ 1.760

Description: Galvanized plating cylinder for better heat conduction, Reversing cylinder. Hood for humidity and steam discharge. Finger protection and emergency button for more safety. Protection cover for all electrical components. Up to 220 °C durable NOMEX ironing belts



VLRI60200 – ROLLER IRONER WITH DRYER BAND

Model: VLRI60200

Dimensions / Weight: 2750x1300x1700/ 1.420

Roller dimensions: 600x2000

Electric power: 27.0

Drum capacity: 1,100

Pack. Dim. / Gross Weight mm/kg: 2800x1350x1750/ 1.440

Description: Galvanized plating cylinder for better heat conduction, Reversing cylinder. Hood for humidity and steam discharge. Finger protection and emergency button for more safety. Protection cover for all electrical components. Up to 220 °C durable NOMEX ironing belts



VLRI75200 – ROLLER IRONER WITH DRYER BAND

Model: VLRI75200

Dimensions / Weight: 3500x1500x1800/ 1.730

Roller dimensions: 750x2000

Electric power: 28.5

Drum capacity: 1.500

Pack. Dim. / Gross Weight mm/kg: 3050x1630x1950/ 1.760

Description: Galvanized plating cylinder for better heat conduction, Reversing cylinder. Hood for humidity and steam discharge. Finger protection and emergency button for more safety. Protection cover for all electrical components. Up to 220 °C durable NOMEX ironing belts



VLRI75250- ROLLER IRONER WITH DRYER BAND

Model: VLRI75250

Dimensions / Weight: 4000x1500x1800/ 1.950

Roller dimensions: 750x2500

Electric power: 36.0

Drum capacity: 2.200

Pack. Dim. / Gross Weight mm/kg: 3550x1630x1950/ 1.980

Description: Galvanized plating cylinder for better heat conduction, Reversing cylinder. Hood for humidity and steam discharge. Finger protection and emergency button for more safety. Protection cover for all electrical components. Up to 220 °C durable NOMEX ironing belts





PRESS IRONER

Model: VPRU-01

Dimensions / Weight: 1580x1200x1350/350

Electric power: 20.750

Capacity: 25

Pack. Dim. / Gross Weight mm/kg: 1620x1250x1450/380

Description: Strong vacuuming feature, %100 safety with high pressure alarm. Automatic water supply system with water pump. Work setup time is 25 minutes. Operating pressure is 4 bar.



IRON BOARD

Model: VPAU-01

Dimensions / Weight: 1490x420x910/80

Electric power: 6.5

Capacity: 30

Pack. Dim. / Gross Weight mm/kg: 1550x500x980/89

Description: Galvanized plating cylinder for better heat conduction, Reversing cylinder. Hood for humidity and steam discharge. Finger protection and emergency button for more safety. Protection cover for all electrical components. Up to 220 °C durable NOMEX ironing belts



LINEN WASHING TABLE

Dimensions: 1900x800x850

Description: Linen washing table



STAINLESS STEEL CHUTES

Description: Industrial laundry chutes are designed to streamline the process of collecting and transporting laundry in commercial or industrial settings. Made from durable stainless steel, these chutes ensure smooth, hygienic, and efficient transfer of soiled laundry to collection areas. Their corrosion-resistant properties ensure longevity and easy maintenance, while the design allows for high-capacity use and quick disposal of linens, towels, and uniforms.

Size (mm): Custom sizes available (typically ranging from 500 mm to 800 mm in width and adjustable lengths, depending on the system requirements).



CUSTOM LINEN TROLLEY

Ideal for use in hotels, hospitals, gyms and areas of high turnover linen. Customizable to customers' requirements. Mounted on a stainless steel frame with washable canvas material.



SIGNAGES

SSP offers durable high-quality stainless steel signages and kick plates, enhancing visibility and durability with a professional appearance. We can custom make various signages from Stainless Steel. We can also custom make various Skirtings & Kick Plates from Stainless Steel





STAINLESS STEEL PRODUCTS LTD

PRINTED



Stainless Steel
Products Limited



0719625495 / 0757159886



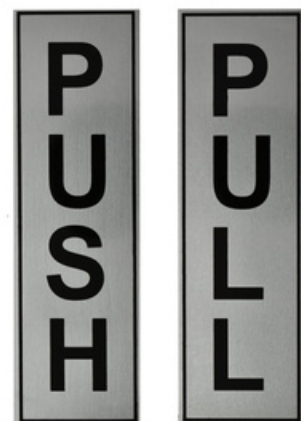
info@ssp.co.ke



STAINLESS STEEL PRODUCTS LTD

GROOVED







STAINLESS STEEL PRODUCTS LTD

KICK PLATES



Stainless Steel
Products Limited



0719625495 / 0757159886



info@ssp.co.ke



STAINLESS STEEL PRODUCTS LTD

LASER CUT





STAINLESS STEEL PRODUCTS LTD

CONTACT US

www.ssp.co.ke
[@sspl.ke](mailto:info@sspl.ke)

+254719625495
info@ssp.co.ke