

STAINLESS STEEL PRODUCTS LTD



# PRODUCT CATALOGUE

RESTAURANT CATALOG

2025



[www.ssp.co.ke](http://www.ssp.co.ke)  
[@sspl.ke](https://www.instagram.com/sspl.ke)

No.6 Shimo La Tewa Road  
+254719625495

A photograph of a modern restaurant interior with a blue semi-transparent overlay. The background shows a dining area with tables, chairs, and a large window looking out onto a green landscape. The blue overlay contains the text for the advertisement.

# RESTAURANT EQUIPMENT

Built for high-volume cooking and food preparation. Includes fryers, grills, ovens, meat and vegetable machines, shawarma machines, potato processors, soup tureens, ice cream machines, commercial refrigerators, and display units for ready-to-serve meals.



## HOT MAX 900 GAS | GR921

**Dimension:** 850x900x900

**Gross (kg) / (m³):** 112 / 0.97

**Total Power (W):** 4×8000

**Gas Consumption (LPG):** 2.51 kg/h

**Description:** Gas • On open stand  
Body, paneling made of stainless steel.  
Operable with LP or natural gas. Burners with pilot, safety valve and thermocouple. If the flame goes out, gas is cut off.



## HOT MAX 900 GAS | GR911

**Dimension:** 425x900x900

**Gross (kg) / (m³):** 67 / 0.51

**Total Power (W):** 2×8000

**Gas Consumption (LPG):** 1.26 kg/h

**Description:** Gas • On open stand  
Body, paneling made of stainless steel.  
Operable with LP or natural gas. Burners with pilot, safety valve and thermocouple. If the flame goes out, gas is cut off.



## HOT MAX 900 GAS | GR922E

**Dimension:** 850x900x900

**Gross (kg) / (m³):** 158 / 0.97

**Total Power (W):** 4×8000 6000

**Gas Consumption (LPG):** 2.51 kg/h

**Description:** Gas • on 2/1 GN Electric oven •  
4 burners Without tray and container Body, paneling made of stainless steel. LP or natural gas. Burners with pilot, safety valve and thermocouple. Controlled by thermostats against overheating. The oven with two fans.



## HOT MAX 900 GAS | GR922P

**Dimension:** 850x900x900

**Gross (kg) / (m³):** 180 / 0.97

**Total Power (W):** 14000 7500

**Gas Consumption (LPG):** 1.69 kg/h

**Description:** Gas • on 2/1 GN gas oven  
Without tray and container Body, paneling made of stainless steel.

LP or natural gas. Burners with pilot, safety valve and hermocouple. Oven burner with ignition, pilot, thermocouple and thermostat. If the flame goes out, gas are cutted off.

Each gas burner provides heat economy, operating independently from each other.



## HOT MAX 900 GAS | GR931

**Dimension:** 1275x900x900

**Gross (kg) / (m³):** 159 / 1.44

**Total Power (W):** 6×8000

**Gas Consumption (LPG):** 3.77 kg/h

**Description:** Gas • On open stand  
Body, paneling made of stainless steel.

Operable with LP or natural gas. Burners with pilot, safety valve and thermocouple. If the flame goes out, gas is cut off.



## HOT MAX 900 GAS | GR932

**Dimension:** 1275x900x900

**Gross (kg) / (m³):** 203 / 1.44

**Total Power (W):** 6×8000 7500

**Gas Consumption (LPG):** 4.35 kg/h

**Description:** Gas • On 2/1 GN gas oven • 6 burners  
Without tray and container

GR922K+GR911 Body, paneling made of stainless steel. LP or natural gas. Burners with pilot, safety valve and thermocouple. Oven burner with ignition, pilot, thermocouple and thermostat. If the flame goes out, gas is cut off. Each gas burner provides heat economy, operating independently from each other.





## HOTMAX 900 GG911G - FRY TOP

**Dimension:** 425x900x900

**Gross (kg) / (m³):** 75 / 0.51

**Total Power (W):** 7500

**Gas Consumption (LPG):** 0.59 kg/h

**Description:** Gas • Grooved surface Mirror finishing • Chrome coated Body, paneling made of stainless steel.

Operable with LP or natural gas. Controlled by thermostat. Burner with ignition, pilot, thermocouple and thermostat.

If the flame goes out, gas is cut off.

Removable fat container.



## HOTMAX 900 GG921G - FRY TOP

**Dimension:** 850x900x900

**Gross (kg) / (m³):** 145 / 0.97

**Total Power (W):** 2x7500

**Gas Consumption (LPG):** 1.18 kg/h

**Description:** Gas • Grooved surface Mirror finishing • Chrome coated Body, panelling made of stainless steel.

Operable with LP or natural gas. Controlled by thermostat. Burner with ignition, pilot, thermocouple and thermostat. If the flame goes out, gas are cut off.

Removable fat container.



## HOTMAX 700 WR721-S | GAS WOK COOKER

**Dimension:** 800x700x290

**Gross (kg) / (m³):** 47 / 0.25

**Total Power (W):** 2x16000

**Gas Consumption (LPG):** 1.88 kg/h

**Description:** Gas, Body, paneling made of stainless steel. LP or natural gas

Each gas burner provides heat economy, operating independently from each other.

Burners with pilot, safety valve and thermocouple. If the flame goes out, gas is cut off.



## HOTMAX 700 | FRY TOP GG721SG-S

**Dimension:** 800x700x290

**Gross (kg) / (m³):** 91 / 0.35

**Total Power (W):** 2x6000

**Gas Consumption (LPG):** 0.94 kg/h

**Description:** Gas • 1/2 Smooth, 1/2 Grooved surface Uncoated surface. Body, panelling made of stainless steel.

Operable with LP or natural gas. Controlled by thermostat. Burner with ignition, pilot, thermocouple and thermostat.

If the flame goes out, gas is cut off.

Removable fat container.



## HOTMAX 900 GG921G - FRY TOP

**Dimension:** 850x900x900

**Gross (kg) / (m³):** 145 / 0.97

**Total Power (W):** 2x7500

**Gas Consumption (LPG):** 1.18 kg/h

**Description:** Gas • Grooved surface Mirror finishing • Chrome coated Body, panelling made of stainless steel.

Operable with LP or natural gas. Controlled by thermostat. Burner with ignition, pilot, thermocouple and thermostat. If the flame goes out, gas are cut off. Removable fat container.



## HOTMAX 700 GAS VAPOR GRILL | GW711-S

**Dimension:** 400x700x290

**Gross (kg) / (m³):** 60 / 0.18

**Total Power (W):** 6000

**Gas Consumption (LPG):** 0.47 kg/h

**Description:** Gas, Body, panelling made of stainless steel. Operable with LP or natural gas. Controlled by thermostat. Burner with ignition, pilot, thermocouple and thermostat. If the flame goes out, gas are cut off. Removable fat container.



## HOTMAX 600 PASTA COOKER | EMH604

**Dimension:** 400x600x265

**Gross (kg) / (m³):** 91 / 0.35

**Total Power (W):** 1x3000

**Basket:** 145x200x170

**Energy:** 220V / 50Hz

**Description:** Electric. Body paneling baskets and wells made of stainless steel. Controlled by thermostat. Safety thermostat



## HOTMAX 700 CHIPS SCUTTLE | EPC711-S

**Dimension:** 400x700x290

**Capacity:** 1x28

**Gross (kg) / (m³):** 30 / 0.21

**Total Power (W):** 650/350

**Energy:** 220V 50Hz

**Description:** Made of stainless steel. Heated with ceramic heating element. Container 1/1 GN.



## HOTMAX 700 GAS VAPOR GRILL | GW711-S

**Dimension:** 400x700x290

**Gross (kg) / (m³):** 60 / 0.18

**Total Power (W):** 6000

**Gas Consumption (LPG):** 0.47 kg/h

**Description:** Gas, Body, panelling made of stainless steel. Operable with LP or natural gas. Controlled by thermostat. Burner with ignition, pilot, thermocouple and thermostat. If the flame goes out, gas are cutted off. Removable fat container.



### STAINLESS STEEL SINGLE BASKET FRYER TABLE TOP WITH TAP

Size:310\*480\*360mm

Voltage:220V/50Hz

Power:3.25kW

Temp:50-200°C

Comes in 50l, 28l, 19l, 13l, 8l

Both Gas and electric available



### STAINLESS STEEL SINGLE BASKET FRYER TABLE TOP

Size:310\*480\*360mm

Voltage:220V/50Hz

Power:3.25kW

Temp:50-200°C

Comes in 50l, 28l, 19l



### STAINLESS STEEL SINGLE BASKET FRYER ON STAND

Size:310\*480\*360mm

Voltage:220V/50Hz

Power:3.25kWTemp:50-200°C

Comes in 50l, 28l, 19l





### STAINLESS STEEL DOUBLE BASKET FRYER TABLE TOP WITH TAP

Size: 540 x 640 x 880mm (+150), 2 Tank  
Volt: 420V/50Hz/three phase  
Power: 8+8kW  
Temp: 50-200°C  
Comes in 50l, 28l, 19l, 13l, 8l  
Both Gas and electric available



### STAINLESS STEEL DOUBLE BASKET FRYER TABLE TOP

Size: 540 x 640 x 880mm (+150), 2 Tank  
Volt: 420V/50Hz/three phase  
Power: 8+8kW  
Temp: 50-200°C  
Comes in 50l, 28l, 19l, 13l, 8l  
Both Gas and electric available



### STAINLESS STEEL DOUBLE BASKET FRYER ON STAND

Size: 540 x 640 x 880mm (+150), 2 Tank  
Volt: 420V/50Hz/three phase  
Power: 8+8kW  
Temp: 50-200°C  
Comes in 50l, 28l, 19l, 13l, 8l  
Both Gas and electric available



## ELECTRIC GRIDDLE ON STAINLESS STEEL STAND

**Model: LD822A**

Capacity 13L

Gas source LPG



## GAS GRIDDLE ON STAINLESS STEEL STAND

**Model: AS-722**

Description: Counter Top 2 burners Gas

Griddle 1/3 Grooved

Dimension: 730\*530\*340 mm

Source: LPG

N.W 24.5 kg

Comes with 3 burner 1/3 Grooved

Dimension: 900\*630\*400 mm



## LAVA GRILL GAS ON STAND

**Model: AS-589**

Description: Counter Top Gas Lava Rock

Grill 2 Burner

Dimension: 600\*650\*480mm

- LPG/LNG is optional
- Comes with a stand



## SALAMANDER GRILL ELECTRIC

Description: Electric Lift Salamander

Dimension: 800\*460\*505 mm ZH-800.LS

Voltage: 220V/50HZ/Single phase

Power: 6kW





## GAS SHAWARMA MACHINE WITH 3 BURNERS

Description: Gas Kebab Machine (3

burners) With oil pan

Size: 540\*630\*800mm

Source: LPG

BTU: 52545

- With motor on the bottom of the machine so the meat can be turned around.
- For 10-15 kg meat.
- Accidental flame out protection device



## GAS SHAWARMA MACHINE WITH 4 BURNERS

**Model: ASGB-950**

Description: Gas Kebab Machine (4 burners)

Size: 580\*630\*950mm

N.W.: 27KGS

- With oil pan and accidental flame out protection device
- With motor on the bottom of the machine so the meat can be turned around.
- For 15-20 kg meat.





## STAINLESS STEEL UNDER COUNTER FRIDGE WITH GLASS DOOR

### Model no SSP-UC-712

- Size: 1200\*700\*800mm,
- Size: 1500\*700\*800mm,
- Size: 1800\*700\*800mm
- Internal capacity: 7 Cubic ft (200Lits)SS
- Internal capacity 9 Cubic Ft (260Lits)SS
- Internal capacity 12 Cubic Ft (340Lits) SS

Material" SUS201

Temperature: 10~-5°C

Voltage: 220V/50HZ

- With glass door
- Digital controller
- Self-closing door



## STAINLESS STEEL UNDER COUNTER FRIDGE WITH STAINLESS STEEL DOOR

- Size: 1200\*700\*800mm,
- Size: 1500\*700\*800mm
- Internal capacity: 7 Cubic ft (200Lits)SS
- Internal capacity: 9 Cubic Ft (260Lits)SS

Material: SUS201

Cooling temperature: 10~-5°C

Voltage: 220V/50HZ

- Digital controller
- Self-closing door Static
- With Stainless Steel door



## STAINLESS STEEL SINGLE DOOR REACH-IN REFRIGERATOR FAN ASSISTED

**Size :620\*760\*1970M, 620\*760\*1970MM SS**

Material: SUS201

Temperature: 10~-5°C

Voltage: 220V/50HZ

With glass door

Self-closing door

Digital controller





### STAINLESS STEEL DOUBLE DOOR REACH-IN REFRIGERATOR WITH GLASS DOOR FAN ASSISTED

Size: 1220\*760\*1970mm SS

Material: SUS201

Temperature: 10~-5°C

Voltage: 220V/50HZ

- Self-closing door Fan
- digital controller
- With glass door



### STAINLESS STEEL SOLID DOOR REACH-IN COMBINED FREEZER / REFRIGERATOR

Description: Stainless Steel 4 door Freezer / Refrigerator

Size: 1200\*700\*1950mm SS

Temperature: Refrigerator : 10~0, Freezer : 0~-15°C

Voltage: 220V/50HZ

- Material: SUS201
- Digital controller
- Static cooling



### STAINLESS STEEL 2 DOOR SINGLE DOOR REACH-IN REFRIGERATOR

Description: Stainless Steel Refrigerator

Size: 620\*730\*1950mm SS

Material: SUS201

Voltage: 220V/50HZ

Temperature: 0~-15°C

- Digital controller
- Static cooling



## MEAT DISPLAY SHOWCASE

Description: Meat display counter

- Size: 1200\*1050\*1200mm,  
1500\*1050\*1200mm

Refrigerant: R290 -Static cooling system

Temperature: 8~2°C

Voltage: 220V/50HZ



## ELECTRIC STAINLESS STEEL WARMING SHOWCASE

Description: Electric Stainless steel warming showcase

Size: 600x490x615mm, 900x490x615mm

Voltage / power: 220V/50Hz/1.84KW

Temperature: 50-85 °C

- 2 Good display effect
- Curved
- Glass Warming Showcase



## TABLE TOP HEATED DISPLAY UNIT

Type: Straight type

Size: 900\*580\*730mm

Base: stainless steel

Temperature: 30~70°C

Voltage: 220V/50HZ

- Digital controller



## FREE STANDING HEATED SHOWCASE

Type: Straight type

Size: 900\*670\*1200mm

Base: marble

Temperature: 30~70°C -Digital controller

Voltage: 220V/50HZ



## GLASS TOP FREEZER DISPLAY UNIT

**Model: SD/SC-360**

Static cooling system

Copper tube

Temperature: 0~-18°C

Volume: 360L

R290 220V/50HZ

- Size: 1434×684×870mm
- Size: 1650\*700\*870mm



## STAINLESS STEEL HEATED DISPLAY CABINET

**Model: AR60-1**

Description: Electric Stainless steel warming showcase

Size: 660x490x615mm

Voltage /power: 220V/50Hz/1.84KW

Temperature: 50-85 °C

- Good display effect, Curved Glass showcase
- Temperature controller from 50-85 °C
- There are three layers to display and four sides with glass





## STAINLESS STEEL REFRIGERATED SALAD / PIZZA TOPPING COUNTERS

Size: 1130 x 404 x 450mm With 4 GN  
Containers of 1/3GN

Size: 1480x404x450mm With 6 GN  
Containers of 1/3GN

Size: 1830x404x451mm With 8 GN  
Containers of 1/3GN



## GLASS TOP FREEZER DISPLAY UNIT

**Model: SD/SC-360**

Size: 1434x684x870mm -Copper tube  
Temperature: 0~-18°C -Static cooling  
system

Volume: 360L

Voltage: 220V/50HZ



## FOOD WARMER

Arc Food warmer

Voltage:220V/50Hz

Power:0.85kW

Temperature:30-85°C

Size:355\*425\*485mm

Size:665\*500\*620mm

Size:960\*460\*620mm



## TABLE TOP BAIN MARIE

**Model:** ABM-25

Size 520\*195\*545mm





## MANUAL POTATO CHIPS CUTTER

**Model no AS-ST04**

Description: Manual potato chips cutter machine

Size: 170\*228\*150mm

Material: Stainless steel

N.W 4KG



## POTATO PEELER 8KG CHARGE 200KGS PER HOUR

**Model: TP15**

Description: 8KG Potato Peeler

Dimension: 430\*440\*720 mm

Voltage: 220V/50Hz, single phase

Power: 0.75KW

Capacity: 8KG/Timer

Production Capacity: 240KG/H

- Suitable for potato, taro, sweet potato, water chestnut and so on



## POTATO PEELER 15KG CHARGE - 400KGS PER HOUR

**Model: TP15**

Description: 15KG Potato Peeler

Dimension: 520\*495\*790 mm

Voltage: 220V/50Hz, single phase

Power: 1.1KW

Capacity: 15KG/Timer

Production Capacity: 400KG/H

- Suitable for potato, taro, sweet potato, water chestnut and so on



STAINLESS STEEL PRODUCTS LTD

## POTATO MACHINES



### ELECTRIC POTATO CHIPS CUTTER MACHINE

Description: Electric potato chips cutter machine

Size: 620\*165\*270mm

Voltage: 220~240V/50Hz

Power: 40W

Capacity: 100kg/H

Material: 201SS

N.W: 7.95KG

- With 3 Blades: 14X14MM, 10X10MM, 7X7 MM







## ICE CRUSHER

**Model : SSP-IC-01**

Type: Automatic, Double cut

Size: 400\*180\*310mm

Power: 380W

Capacity: 65kg/h

Rotor speed: 220rpm

Material: ABS + Aluminum

Voltage: 220V/50HZ



## ICE MAKING MACHINES

type: Stainless Steel Commercial Ice Cube Machine

Capacity: 45KG

Size: 405\*450\*750mm

Capacity: 45kg/day

Ice storage: 12kg

Power: 320W

Voltage: 220V/50HZ



## ICE MAKING MACHINE

Type: Stainless Steel Commercial Ice Cube Machine

Capacity: 80KG

Size: 510\*590\*820mm

Capacity: 80kg/day

Ice storage: 15kg

Power: 510W

Voltage: 220V/50HZ



### COMMERCIAL HEAVY DUTY MILL GRINDING MACHINE 400 GRAM

Size:16\*16\*37mm

Voltage:220-240V/50Hz

Power:1800W

Capacity:400g

Rotation Speed:2500r/min



### COMMERCIAL HEAVY DUTY MILL GRINDING MACHINE 1500 GRAMS

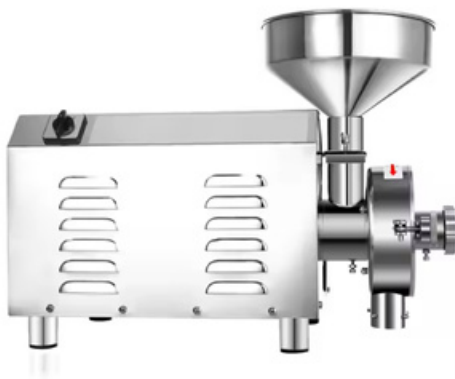
Size:260\*225\*388mm

Voltage:220-240V/50Hz

Power:3500W

Capacity:1500g

Rotation Speed:2500r/min



### COMMERCIAL HEAVY DUTY GRAIN GRINDER MACHINE 3 LITRES

Size:715x380x380mm

Voltage:220-240V/50Hz

Power:3000W

Capacity:50-60kg/H

Fineness:50~200m

Rotation Speed:1500r/min



## VEGETABLE PREPARATION MACHINE

**Model: AS-QC205A**

Type: Vegetable cutter

Dimension: 590\*265\*540mm

Voltage: 220V,50Hz,single phase

Power: 1KW

Blades: 5 pcs (Dice 8\*8mm, shred 3mm, slice 4.5mm/2mm)

Diameter of blade: 205mm (All copper wire motor)



## COMMERCIAL HEAVY DUTY VEGETABLE CHOPPER MACHINE 3 LITRES

Type: Vegetable Chopper

Voltage:220-240V/50Hz

Power:750W

Capacity:3L

Blade Speed:1400



## MEAT SLICER

**Model: B300B-4**

Description: 12 Inch Semi-automatic Meat Slicer

Size: 590\*525\*440mm

Voltage: AC-220V / 50Hz

Power: 270W

Blade Diameter: 300mm

N.W/G.W: 27kg/30kg

Packing Size: 635x535x525mm

- adjust slicer thickness from 0-17mm
- cut off the itinerary :220mm



## MEAT MINCER NO: 12

**Model: 12**

Description: Electric Meat Mincer

Power: 1100w

Capacity: 220kg/h

Net weight: 30kg Gross





## TABLE TOP SOFT ICE CREAM MACHINE

**Model: ASMQ-L20ABN**

Description: Table Top Stainless Steel 3

Head Soft Ice Cream Machine

Dimension: 544\*710\*850 mm

Voltage :220V/50Hz

Power: 1900W

Refrigerant: R22

Yield: 20L/H

N.W: 88KG





**TABLE TO HEAVY DUTY  
GAS STOCK POT  
COOKER – 2 RING  
BURNER**

Type: 2 ring Burner

Size: 300mm x 300mm x 250mm

Burner diameter 180mm



**HEAVY DUTY GAS STOCK  
POT COOKER – 3 RING  
BURNER**

Type: 3 ring Burner

Size: 400mm x 400mm x 250mm

Burner diameter: 220mm



**HEAVY DUTY GAS STOCK  
POT COOKER – 4 RING  
BURNER**

Type: 4 ring Burner

Size: 500mm x 500mm x 250mm

Burner diameter: 340mm



## GASTRONOM PANS

Steam PanFull: x150 SIZE: 530×325×150mm  
1/1

Steam PanFull: x100 GN Full x100

Steam PanFull: x65 GN Full x65

Steam PanFull: XLid GN Full xLID

Steam Pan: 1/2 x150 GN 1/2 x150

Steam Pan: 1/2 x100 GN 1/2 x100

Steam Pan: 1/2 x65 GN 1/2 x65

Steam Pan: 1/2 xLID GN 1/2 xLID

Steam Pan: 1/3 x150 Gastronom pans

Size:325×176×150mm 1/3

Steam Pan: 1/3 x100 Gastronom pans

Size:325×176×100mm 1/3

Steam Pan: 1/3 x65 Gastronom pans

Size:325×176×65mm 1/3

Steam Pan: 1/3 xLID Gastronom pans Cover

Size:325×176mm 1/3

Steam Pan: 1/4 x100 Gastronom pans

Size:325×176×100mm



## ALUMINUM OVEN TRAY

Size: 400x600x30mm



## CREPE MAKER

**Model: ASZH-1E**

Description: Stainless steel Electric Crepe Maker, Teflon coating and non-stick material.

Power: 3KW

Dimension: 460\*475\*230 mm

Voltage: 220V/50Hz

Temperature controller: 50 to 300°C

Cooking plate diameter: 400 mm

N.W 16.5kg



## HAMBURGER PRESS

Diameter: 100mm

Height: 160mm

N.W: 4.8KG



## SOUP TUREEN

**Model: ZQ-C17**

Description: Electric Soup pot

Voltage: 220V 50/60Hz

Inside pot diameter: 23cm

Inside Pot Depth: 26cm

Outside Diameter: 34cm

Product height: 34cm



## HOOD TYPE DISH WASHER

Description: Dish washer

Dimension: 670\*780\*1450mm, without working table, with 3 baskets

Voltage /Power: 380V/3 Phase/50Hz/13kw

N.W: 115kg

G.W: 130kgs



## POPCORN MACHINE

Description: Popcorn Maker

Size: 540\*405\*660mm

Voltage: 220V/50Hz/1.3Kw

Capacity: 8Oz

- Tempered glass



## KEG DISPENSER WITH COOLER

Size: 590\*590\*840mm

Inner size: 540\*470\*720mm

Material: SUS304

Weight: 40kg

- 2\*20L keg+1\*4L cylinder Temp control+ display R600a



## PLATE WARMER DROP IN PLATE DISPENSER

Size: 400\*400\*770mm SS

Material: SUS201

Power: 400w

Plate size: 23-30cm

Plate quantity: 50 pcs

Top open diameter: 385mm

Voltage: 220V



## COMMERCIAL CUP HOLDER

Description: Beverage cup lid divider

Size: 620\*205\*205mm With 4

SIZE OF Cup (9.4CM, 7.6CM, 6.4CM 5.5CM)

Material: PP/ABS

Color: Black



## MULTIFUNCTIONAL STORAGE RACK

Multifunctional storage rack





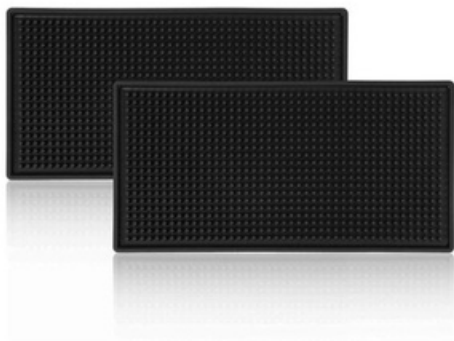
## INSECTOCUTER

Type: Electric shock type -LED-10W  
Size: L56\*D6\*H24.5cm



## HEAT LAMP

Description: Heating Lamps  
Diameter: 17.5CM  
Voltage: 220V  
Power: 250W



## BAR MAT BLACK

Bar Mat Black  
Color: Black  
Material: PVC

Size: 45\*30\*1cm  
Size: 60\*8\*1cm



## STAINLESS STEEL FINISH WIRE RACK / COOLING RACKS

Description: 4 Layers Chrome Wire Shelves

Material Finish: Chrome Plated

Wire diameter: 5.8/4.3/2.8 mm

Wire spacing: 17 mm

Column: 25.4\*1.0m

- Without Wheels
- Size: 1200x530x1800mm
- Size: 1500x530x1800mm



# STAINLESS STEEL PRODUCTS LTD

## CONTACT US

[www.ssp.co.ke](http://www.ssp.co.ke)  
[@sspl.ke](mailto:info@sspl.ke)

+254719625495  
[info@ssp.co.ke](mailto:info@ssp.co.ke)