

STAINLESS STEEL PRODUCTS LTD



PRODUCT CATALOGUE

HOTEL CATALOG

2025



www.ssp.co.ke
[@sspl.ke](https://www.instagram.com/sspl.ke)

No.6 Shimo La Tewa Road
+254719625495

A photograph of a commercial kitchen with stainless steel equipment, including a large range hood and shelving units. A semi-transparent blue rectangle is overlaid on the center of the image, containing the text.

KITCHEN

SSP offers stainless steel kitchen equipment, including cooking, refrigeration, bakery, and coffee shop equipment. Their solutions are designed for durability and efficiency, catering to both commercial kitchens and specialized food preparation environments.

The background image shows a cafe interior. On the left, a menu board is mounted on the wall. Below it, a counter with a stainless steel top and wooden base is visible. On the counter, there are some pastries and a small sign that says "COSTA COFFEE". The ceiling has exposed concrete beams and track lighting. A blue semi-transparent box with rounded corners is overlaid on the center of the image, containing the title and description text.

BAR & COFFEE SHOP EQUIPMENT

Specialized for brewing coffee, tea, and preparing quick snacks. Includes espresso machines, blenders, milkshake mixers, panini presses, waffle makers, ice machines, juice dispensers, and display units for pastries.



FIAMMA COFFEE MACHINE AUTOMATIC CARAVEL

Model: 2CV TC Black

Description: Automatic Machine, With Static Pre infusion Mechanic system that guarantees an even and gentle pre-infusion for a delicious coffee.

Dimensions (WDH): 665x563x530 mm

Water tap: 1

Steam tap: 2

Boiler capacity: 11 litre

Power: 3.8 kw

Power supply :220-230 V/400V-2N



COFFEE MACHINE MARINA RESTYLE - SEMI AUTOMATIC , SINGLE GROUP

Description: Automatic cleaning, pre-infusion

Water tap: 1

Power, voltage: 1.8 kW, 220-240V / 50-60 Hz

Dimensions: 375x530x485mm

Weight: 30.5 kg



FIAMA - COFFEE MACHINE CARAVEL 2 TC - SEMI AUTOMATIC 2 GROUP

Model: CARAVEL 2 TC

Description: Easy control of boiler temperature Semi-automatic manual coffee dosage Work area allows 14cm high cups and trays for smaller cups Water tap and 2 Steam wands

Dimensions: 665mmW x 563mmD x

530mmH / 59kg

Boiler capacity: 11L

Power 3.8kw / 220-230V / 400v - 2N / plug not supplied





FIAMA - COFFEE MACHINE COMPACT CARAVEL 2 TC - SEMI AUTOMATIC 2 GROUP

Description: Easy control of boiler temperature Semi-automatic manual coffee dosage Work area allows 14cm high cups and trays for smaller cups Water tap and 2 Steam wands

Dimensions: 475mmW x 563mmD x 530mmH / 59kg

Boiler capacity: 11L

Power: 3.8kw / 220-230V / 400v - 2N / plug not supplied



FIAMMA CARAVEL 3

Model: Caravel 3 CV

Description: Traditional single boiler system. Programmable drink and hot water portions and automatic cleaning program for the groups. Groups with static pre-infusion chamber.

Dimensions: 875x563x530mm

Weight: 76kg

Water boiler: 5.0 kW (18 l)

Power: 5.2 kW / ~220-240V / 400V~2N



COFFEE GRINDER

Model: MCF 50

Description: Doser grinder Manual doses Grindstone diameter: 50 mm

Power: 150 W

Speed: 1400 rpm

Hopper capacity: 250 g

Portioner capacity: 180 g

Dose range: 7.0 - 10.5 g

Production: 1 Kg/24h

Voltage: ~220-230V / 50 Hz

Dimensions (WDH): 152x250x382 mm

Weight (kg): 5.2 Kg



COFFEE GRINDER

Model: MCF 65A

description: Doser grinder programmable doses

Automatic grindstone diameter: 65 mm

Power: 340 W

Speed 1400 rpm

Hopper capacity: 1.4 Kg

Portioner capacity: 300 g

Dose range: 5.5 – 8.5 g

Voltage ~220–230V / 50 Hz

Dimensions (WDH): 230x370x600 mm



COFFEE GRINDER AUTOMATIC

LD-900A coffee grinder



COFFEE PERCOLATOR

Description: Stainless steel Coffee

Percolator Size:

Voltage: 220V/50Hz

Power: 2000W

Capacity: 1.8L With 1pc coffee pot



WATER SOFTENER

8L Water softener Size:205*410mm

Capacity:8L

Working Temperature:4-15°C

Working Pressure:1-8BAR

Production capacity:1000L/H



MILK FROTHING JUG 350ML



MILK FROTHING JUG 600 ML



STAINLESS STEEL PRODUCTS LTD

COFFEE MACHINES



COFFEE TEMPER

58mm tamper





BLENDER 2 LTS 1500WATTS

Model: SSP-CB-L2

Blender Color: white

Power:1500W

Voltage:220V/50Hz

Capacity:2.0L



CANOPY TYPE ELECTRIC PROFESSIONAL BLENDER. 4L BLENDER

Model: KF-3180B

4L Blender with timer

Dimension: 260*230*550 mm

Jar Capacity: 4L

Power: 2.2K W

Speed:3000rpm

Color:Black

PC jar,304ss

Blades: pure copper

- Also come in a smaller model of 2.5L and model G8



HEAVT DUTY INDUSTRIAL BLENDER 2 LITS 2200 WATTS

Model: KF-C180.

2L Blender

Dimension:200*200*520mm

Jar Capacity:2L

Power: 2.2K W

Speed:3000rpm

N.W: 8.0KG/

G.W:9.5KG

Color:Black

PC jar,304ss Blades,pure copper



6.5 LITS HEAVY DUTY COMMERCIAL BLENDER

Model: KF-C180.

6.5L Blender

N.W: 8.5KG

Color: Black

PC jar: 304ss

Blades: pure copper



IMMERSION BLENDER 350W WITH WISK

Model no: IB350CV+BLD400+WIK250

Power: 350W

Speed: 4000-16000 rpm

Stick Length: 400mm With wisk for
(250mm)



IMMERSION BLENDER 500W

Model no: IB500LV+BLD500

Power: 500W

Speed: 4000-16000

Stick Length: 500mm



IMMERSION BLENDER 500W

Model no: IB750LV+B LD500

Power: 750W

RPM: 8000 - 20000.

Stick Length: 500mm



EXTRA JUG FOR BLENDER 2 LITS MODEL

Model no: SSP-CB L2

G.W:9.5KG





MILK SHAKE MIXER DOUBLE

Model: ASBL-018

Dimension: 330*160*500 mm

Power: 600W

Net Weight: 6KG

Stainless steel cup: 0.9L



MILK SHAKE MIXER SINGLE

Dimension: 240*225*520 mm



TEA URN 10 LITS

Size: 205*205*390mm
Inner size: 190*190*250mm
Material: SUS304
Net volume: 7.1L
Power: 1800w
Temperature: 30-110°C
Voltage: 220V/50HZ



TEA URN 20 LITS

Dimension: 260*370 mm
Capacity: 20L
Voltage: 220V/50Hz



TEA URN 30 LITS

Dimension: 280*370 mm
Capacity: 30L
Voltage: 220V/50Hz



ICE CRUSHER

Model : SSP-IC-01

Type: Automatic, Double cut

Size: 400*180*310mm

Power: 380W

Capacity: 65kg/h

Rotor speed: 220rpm

Material: ABS + Aluminum

Voltage: 220V/50HZ



ICE MAKING MACHINES

type: Stainless Steel Commercial Ice Cube Machine

Capacity: 45KG

Size: 405*450*750mm

Capacity: 45kg/day

Ice storage: 12kg

Power: 320W

Voltage: 220V/50HZ



ICE MAKING MACHINE

Type: Stainless Steel Commercial Ice Cube Machine

Capacity: 80KG

Size: 510*590*820mm

Capacity: 80kg/day

Ice storage: 15kg

Power: 510W

Voltage: 220V/50HZ



TABLE TOP SOFT ICE CREAM MACHINE

Model: ASMQ-L20ABN

Description: Table Top Stainless Steel 3

Head Soft Ice Cream Machine

Dimension: 544*710*850 mm

Voltage :220V/50Hz

Power: 1900W

Refrigerant: R22

Yield: 20L/H

N.W: 88KG



ICE CREAM FRIDGE

Perfect for display of ice cream at point of sale, automatic defrost. Temperature range -20°C to -15°C with high quality digital temperature controller. Heated front window to prevent condensation build up

- **Dimensions:** 1200 x 540 x 790mm
- **Capacity:** 5 x 5Lt pans
- **Weight:** 115kg



PANINI PRESS- SINGLE LARGE

Model: 811E

Type: Panini griddle

Dimension: 430*380*240 mm

Voltage: 220V 50hz

Power: 2.2 kw

Upper size: 338*220 mm

Bottom size: 340*230 mm

N.W: 20 kg



PANINI PRESS DOUBLE

Model: 813

Type: Panini griddle

Dimension 570*380*240 mm

Voltage: 220V 50hz

HP: 3.6 kw

Weight: 28 kg

Upper size: 214*214 mm

Bottom size: 475*230 mm





WAFFLE MAKING MACHINE SINGLE

Model: FY-1

Packing size: 430*305*295 mm

Dimension: 390*250*260 mm

Power: 1300W

Plate size: 180 mm

Tooth depth: 8 mm

Temp range: 50-250 °C



WAFFLE MAKING MACHINE DOUBLE

Mode: FY-2

Dimension: 500*380*360 mm

Power: 1250W+1250W

Voltage: 220V 50hz

Plate size: 185 mm

Tooth depth: 8 mm

Temp range: 50-250 °C



SQUARE TYPE DOUBLE WAFFLE MAKER - DEEP

Mode: MM-2206D

Dimension: Double Plates Waffle Baker

Dimension: 560x350x260 mm

Voltage: 220V/50Hz/single phase

Power: 1.6+1.6 KW

Temperature: 50~300°C



SINGLE PLATE CONE MAKER

Model: KF-1D

Description: Single Plate Cone Baker

Dimension: 250*270*300mm

Voltage: 220 V/50HZ/Single phase

Power: 1 KW

Temperature: 50~300°C





STAINLESS STEEL HEAVY DUTY 4 SLICE TOASTER

Description: 4 Slice Electric Toaster with timer, 4 slice of bread can be cooked at the same time

Dimension: 315×270×220 mm

Voltage: 220V/50Hz

Power: 1.8KW

Material: All stainless steel



STAINLESS STEEL HEAVY DUTY 6 SLICE TOASTER

Model: LD6SD-A

Description 6 Slice Electric Toaster with timer, 6 slice of bread can be cooked at the same time.

Dimension: 410×270×220mm

Voltage: 220V/50Hz Power 2.5KW

Material : All stainless steel



CONVEYOR TOASTER 300 SLICES PER HOUR

Description: Electric Conveyor Toaster

Size: 368*418*387mm

Voltage: 220~240V/50Hz

Power: 1.94kW



JUICE DISPENSER 3 STATION 3 X18 LITS

Model no ACL-LYJ18Lx3

Description: Three Tank Juice Dispenser

Capacity : 18Lx3

Cool Temperature: 7~12°C

Hot Temperature: 52~58°C 220V 50Hz/60Hz

Power: 350W (cool), 1500W (hot)

Packing Size: 750*470*740mm

G.W/N.W: 42KG/39KG



JUICE EXTRACTOR

Model: ASZX-6

Description: Juice Extractor

Dimension: 430x320x380mm

Power, voltage: 370W, 220V/50Hz

Disc Diameter: 124mm

N.W: 11KG



BACK BAR FRIDGE / BOTTLE COOLER 2 DOOR

Description: 2 door bar cooler Fan-assisted cooling system

Size: 900×505×895mm -black coated plate

Temperature: 2-8°C -digital controller

Voltage: 220V/50HZ



BACK BAR FRIDGE / BOTTLE COOLER 3 DOOR

Description: 3 door bar cooler Fan-assisted cooling system

Size: 1335×505×895mm black coated plate

Temperature: 2-8°C digital controller

Voltage: 220V/50HZ





TABLETOP CAKE SHOWCASE

Size: 900*580*730mm

Base stainless steel

- Digital controller



CAKE DISPLAY UNIT FREE STANDING

Type: Straight type

Base: marble

Temperature: 8~2°C

- Digital controller
- Fan cooling system
- Front glass with heating wire

Comes in these sizes:

- 900*670*1200mm
- 1200*670*1200mm
- 1500*670*1200mm
- 1200*670*1400mm



UPRIGHT CAKE DISPLAY

Description: Upright Cake Display

Size: 900*720*1900mm

Base: SS201

Temperature: 8~2°C

Voltage: 220V/50HZ

- Digital controller
- Fan cooling system
- Scoop compressor



ELECTRIC STAINLESS STEEL WARMING SHOWCASE

Description: Electric Stainless steel warming showcase

Size: 600x490x615mm, 900x490x615mm

Voltage / power: 220V/50Hz/1.84KW

Temperature: 50-85 °C

- 2 Good display effect
- Curved
- Glass Warming Showcase



TABLE TOP HEATED DISPLAY UNIT

Type: Straight type

Size: 900*580*730mm

Base: stainless steel

Temperature: 30~70°C

Voltage: 220V/50HZ

- Digital controller



MULTIFUNCTIONAL STORAGE RACK

Multifunctional storage rack



INSECTOCUTER

Type: Electric shock type -LED-10W
Size: L56*D6*H24.5cm

The background image shows a professional bakery kitchen. On the left, there are several metal racks filled with golden-brown baked goods, likely bread or pastries. In the center, a large blue rounded rectangle contains the title and description. To the right, a stainless steel mixer is visible. The background wall is made of light-colored square tiles.

BAKERY EQUIPMENT

Designed for mixing, proofing, and baking bread, cakes, and pastries. Features ovens, mixers, bread slicers, crepe makers, refrigerators, display units, and essential baking trays and pans.



1 DECK ELECTRIC OVEN

Model: SSP-DO--120

Description: Electric Deck Oven, 1 Deck 2 trays Machine

Size: 1230*1035*550mm

Inner size: 870*635*230mm

Pan size: 600*400mm

Power, voltage: 6.6kW, 380~415V/50Hz

Material: 201SS 0.6mm thickness for oven front



PIZZA OVEN 1 DECK ELECTRIC OVEN

Model: SSP-DO--120p

Description: Electric Deck Pizza Oven 1 Deck 2 Trays machine

Size: 1230*1035*550mm

Inner size: 870*635*230mm

Pan size: 600*400mm

Power, voltage: 6.6kW, 380~415V/50Hz

Material: 201SS 0.6mm thickness for oven front



2 DECK ELECTRIC OVEN

Model: SSP-DO--240

Electric Deck Oven 2 Deck 4 Trays Electric Deck Oven

Machine size: 1260*805*1100 mm

Chamber size: 860*670*220 mm

Temperature: 20~400°C

Volt: 380~415V/three phase/13.2 KW /50 Hz



3 DECK ELECTRIC OVEN

Model: SSP-DO-360

Description: Classical 3 Deck 6 Trays

Electric Deck Oven

Machine size: 1260*805*1515mm

Chamber size: 860*670*220mm

Temperature: 20-400°C

Voltage: 380 V/three phase/19.8KW /50 Hz



3 DECK ELECTRIC OVEN 1700MM WIDE

Model: SSP-DO-3120

Description: Classical 3 Deck 12 Trays

Machine size: 1700*1055*1515 mm

Chamber size: 1300*925*220 mm

Voltage: 380V/three phase/38KW/50Hz

Temperature: 20-400°C



ELECTRIC 4 TRAY CONVECTION OVEN WITH THE HUMIDIFIER

Description: Perspective Electric Convection Oven

Dimension: 595*530*570 mm

Voltage: 220 V/2.6 KW

N.W: 39 KG

Inner size: 46*38*36 cm

Pan size: 43.5*31 cm

- Hot Air Circulation Function
- Time Control Function
- Upper heating function
- Spray Function



CONVEYOR PIZZA OVEN HEP-18



Description: Conveyor Pizza Oven
Dimensions (in mm): 1560x750x850
Belt Size (mm) : 457
Work Station Dimensions (mm):
500x1450mm
Voltage: 380V / 50-60 Hz (3-Phase)

ELECTRIC 6 TRAY CONVECTION OVEN WITH THE HUMIDIFIER

Model: WGB-8A

Description: Perspective Electric Convection Oven

Dimension: 835*770*575mm

Voltage: 220~240V/5.8kw/single phase/50Hz N.W 38 KG

Pan size: 40*60cm (Including 4 pans)

Temperature: 50-300°C

Hot Air Circulation Function

Time Control Function

Upper Heating Function

Spray Function

Imported Fan



CHICKEN ROASTER 4 TRAYS / ELECTRIC CHICKEN ROTISSERIE

Model: B-266

Dimension: 1010*630*800mm

Power: 6KW Single phase

Capacity: 12-16 pieces chicken

- One temperature controller from 50-300 degree. (6 heaters)
- One inching switch, revolving switch and light switch





STAINLESS STEEL PROOFER 16 TRAYS

Model:SH-16C

Description: 16Trays Classical Proofer With

Automatic Water inlet Function

Size:500*700*1880mm

Voltage:220V/50Hz

Power:2.6kW

Capacity:16Trays Suitable tray

Size:400*600mm Without Trays



STAINLESS STEEL PROOFER 32 TRAYS

Model:SH-16C

Description: 32 Trays Classical Proofer With

Automatic Water inlet Function

Size:500*1400*1880mm

Voltage:220V/50Hz

Power:2.6kW

Capacity:32Trays Suitable tray

Size:400*600mm Without Trays x 2





PIZZA STONE

Size size:638*430*15mm



PIZZA PRESS

32(Pressure): 320KG

The mold Diameter: 22cm



PIZZA BASE ROLLING MACHINE

Model: WG-PD40 pizza

Diameter: 10-40cm

Dough weight: 50~500g

Voltage: 220V 370W

Size: 540*550*650mm





NN-ST65JM COMMERCIAL MICROWAVE MACHINE – 32 LITS

Model: NN-ST65JM

Description: Commercial Microwave Machine

Brand: Panasonic

Size: 310*525*388mm

Inner size: 245*345*355mm

Power: 1000w

Volume: 32L

Voltage: 220-240V/50HZ

Plate diameter: 340mm



LOW DUTY MICROWAVE OVEN – 25 LITS

Description: Low Duty Microwave Oven

Capacity: 25 litres

- 900w microwave, 1000w grill
- LED display with buttons & dial controls
- Clock display function
- Black with a glass mirror finish



CAKE MIXER 7 LITS

Description: 7L Cake Mixer without cover
Size: 430*300*500mm
Voltage: 220V/50Hz/Single phase
Power: 350W
Capacity: 7L With 1x Hook, 1x beater, 1x wire whisk



B20 PLANETARY MIXERS / FOOD MIXERS – 20 LITS

Model: WG-B20

Description: 20L Planetary Food Mixer with safety guard
Dimension: 770x500x410mm
Bowl capacity : 20L
Voltage: 220V/ 50Hz /Single Phase/1.1 KW
Max dough mixing: 4 KG
Mixing speed: 105/180/408 r/min
Gear Drive



B30 PLANETARY MIXERS / FOOD MIXERS – 30 LITS

Model: WG-B30

Description: 30L Full Belt Food Mixer With Safety Guard
Bowl capacity: 30L
Dim: 650*520*1000mm
Voltage: 220V/single phase/50HZ/1.5kw
Max dough mixing: 4KG
Full belt, with safety cover
G.W: 78 KGS



DOUGH MIXER 16KG/45L DOUGH MIXER WITH TIMER

Description: 16kg/45L Dough Mixer With timer

Dimension: 700x530x800mm

Hook speed: 213/153r/m

Bowl speed: 20/13r/m

Max dough mixing : 16kg

Voltage: 220V/380V,50Hz,2500W

N.W.: 110KG





STAINLESS STEEL UNDER COUNTER FRIDGE WITH GLASS DOOR

Model no SSP-UC-712

- Size: 1200*700*800mm,
- Size: 1500*700*800mm,
- Size: 1800*700*800mm
- Internal capacity: 7 Cubic ft (200Lits)SS
- Internal capacity 9 Cubic Ft (260Lits)SS
- Internal capacity 12 Cubic Ft (340Lits) SS

Material" SUS201

Temperature: 10~-5°C

Voltage: 220V/50HZ

- With glass door
- Digital controller
- Self-closing door



STAINLESS STEEL UNDER COUNTER FRIDGE WITH STAINLESS STEEL DOOR

- Size: 1200*700*800mm,
- Size: 1500*700*800mm
- Internal capacity: 7 Cubic ft (200Lits)SS
- Internal capacity: 9 Cubic Ft (260Lits)SS

Material: SUS201

Cooling temperature: 10~-5°C

Voltage: 220V/50HZ

- Digital controller
- Self-closing door Static
- With Stainless Steel door



STAINLESS STEEL SINGLE DOOR REACH-IN REFRIGERATOR FAN ASSISTED

Size :620*760*1970M, 620*760*1970MM SS

Material: SUS201

Temperature: 10~-5°C

Voltage: 220V/50HZ

With glass door

Self-closing door

Digital controller





GASTRONOM PANS

Steam PanFull: x150 SIZE: 530×325×150mm
1/1

Steam PanFull: x100 GN Full x100

Steam PanFull: x65 GN Full x65

Steam PanFull: XLid GN Full xLID

Steam Pan: 1/2 x150 GN 1/2 x150

Steam Pan: 1/2 x100 GN 1/2 x100

Steam Pan: 1/2 x65 GN 1/2 x65

Steam Pan: 1/2 xLID GN 1/2 xLID

Steam Pan: 1/3 x150 Gastronom pans

Size:325×176×150mm 1/3

Steam Pan: 1/3 x100 Gastronom pans

Size:325×176×100mm 1/3

Steam Pan: 1/3 x65 Gastronom pans

Size:325×176×65mm 1/3

Steam Pan: 1/3 xLID Gastronom pans Cover

Size:325×176mm 1/3

Steam Pan: 1/4 x100 Gastronom pans

Size:325×176×100mm



ALUMINUM OVEN TRAY

Size: 400x600x30mm



TABLETOP CAKE SHOWCASE

Size: 900*580*730mm

Base stainless steel

- Digital controller



CAKE DISPLAY UNIT FREE STANDING

Type: Straight type

Base: marble

Temperature: 8~2°C

- Digital controller
- Fan cooling system
- Front glass with heating wire

Comes in these sizes:

- 900*670*1200mm
- 1200*670*1200mm
- 1500*670*1200mm
- 1200*670*1400mm



UPRIGHT CAKE DISPLAY

Description: Upright Cake Display

Size: 900*720*1900mm

Base: SS201

Temperature: 8~2°C

Voltage: 220V/50HZ

- Digital controller
- Fan cooling system
- Scoop compressor



STAINLESS STEEL REFRIGERATED SALAD / PIZZA TOPPING COUNTERS

Size: 1130 x 404 x 450mm With 4 GN
Containers of 1/3GN

Size: 1480x404x450mm With 6 GN
Containers of 1/3GN

Size: 1830x404x451mm With 8 GN
Containers of 1/3GN



FREE STANDING HEATED SHOWCASE

Type: Straight type

Size: 900*670*1200mm

Base: marble

Temperature: 30~70°C -Digital controller

Voltage: 220V/50HZ



STAINLESS STEEL HEATED DISPLAY CABINET

Model: AR60-1

Description: Electric Stainless steel warming
showcase

Size: 660x490x615mm

Voltage /power: 220V/50Hz/1.84KW

Temperature: 50-85 °C

- Good display effect, Curved Glass showcase
- Temperature controller from 50-85 °C
- There are three layers to display and four sides with glass



CREPE MAKER

Model: ASZH-1E

Description: Stainless steel Electric Crepe Maker, Teflon coating and non-stick material.

Power: 3KW

Dimension: 460*475*230 mm

Voltage: 220V/50Hz

Temperature controller: 50 to 300°C

Cooking plate diameter: 400 mm

N.W 16.5kg



PLATE WARMER DROP IN PLATE DISPENSER

Size: 400*400*770mm SS

Material: SUS201

Power: 400w

Plate size: 23-30cm

Plate quantity: 50 pcs

Top open diameter: 385mm

Voltage: 220V



BREAD SLICER

Model: WG-Q31

Description: 31 Pcs Bread Slicer

Machine size: 515*625*585 mm

Voltage: 220V /50HZ 250W

Blade Quantity: 31 pcs

Bread thickness: 12 mm

Max bread: 380mm



STAINLESS STEEL FINISH WIRE RACK / COOLING RACKS

Description: 4 Layers Chrome Wire Shelves

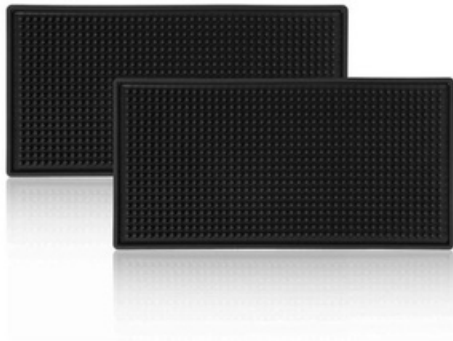
Material Finish: Chrome Plated

Wire diameter: 5.8/4.3/2.8 mm

Wire spacing: 17 mm

Column: 25.4*1.0m

- Without Wheels
- Size: 1200x530x1800mm
- Size: 1500x530x1800mm



BAR MAT BLACK

Bar Mat Black

Color: Black

Material: PVC

Size: 45*30*1cm

Size: 60*8*1cm

A photograph of a modern restaurant interior with a blue semi-transparent overlay. The background shows a dining area with tables, chairs, and a large window looking out onto a green landscape. The ceiling has exposed wooden beams and modern lighting fixtures.

RESTAURANT EQUIPMENT

Built for high-volume cooking and food preparation. Includes fryers, grills, ovens, meat and vegetable machines, shawarma machines, potato processors, soup tureens, ice cream machines, commercial refrigerators, and display units for ready-to-serve meals.



COMMERCIAL HEAVY DUTY MILL GRINDING MACHINE 400 GRAM

Size:16*16*37mm

Voltage:220-240V/50Hz

Power:1800W

Capacity:400g

Rotation Speed:25000r/min



COMMERCIAL HEAVY DUTY MILL GRINDING MACHINE 1500 GRAMS

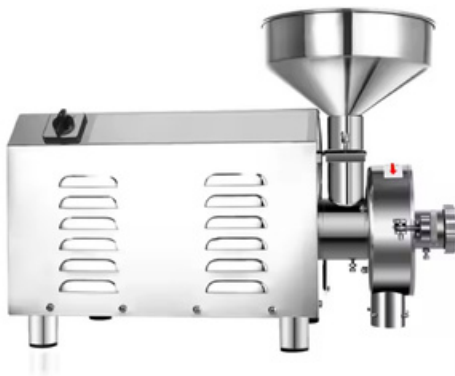
Size:260*225*388mm

Voltage:220-240V/50Hz

Power:3500W

Capacity:1500g

Rotation Speed:25000r/min



COMMERCIAL HEAVY DUTY GRAIN GRINDER MACHINE 3 LITRES

Size:715x380x380mm

Voltage:220-240V/50Hz

Power:3000W

Capacity:50-60kg/H

Fineness:50~200m

Rotation Speed:1500r/min



VEGETABLE PREPARATION MACHINE

Model: AS-QC205A

Type: Vegetable cutter

Dimension: 590*265*540mm

Voltage: 220V,50Hz,single phase

Power: 1KW

Blades: 5 pcs (Dice 8*8mm, shred 3mm, slice 4.5mm/2mm)

Diameter of blade: 205mm (All copper wire motor)



COMMERCIAL HEAVY DUTY VEGETABLE CHOPPER MACHINE 3 LITRES

Type: Vegetable Chopper

Voltage:220-240V/50Hz

Power:750W

Capacity:3L

Blade Speed:1400



MEAT SLICER

Model: B300B-4

Description: 12 Inch Semi-automatic Meat Slicer

Size: 590*525*440mm

Voltage: AC-220V / 50Hz

Power: 270W

Blade Diameter: 300mm

N.W/G.W: 27kg/30kg

Packing Size: 635x535x525mm

- adjust slicer thickness from 0-17mm
- cut off the itinerary :220mm



MEAT MINCER NO: 12

Model: 12

Description: Electric Meat Mincer

Power: 1100w

Capacity: 220kg/h

Net weight: 30kg Gross



ICE CRUSHER

Model : SSP-IC-01

Type: Automatic, Double cut

Size: 400*180*310mm

Power: 380W

Capacity: 65kg/h

Rotor speed: 220rpm

Material: ABS + Aluminum

Voltage: 220V/50HZ



ICE MAKING MACHINES

type: Stainless Steel Commercial Ice Cube Machine

Capacity: 45KG

Size: 405*450*750mm

Capacity: 45kg/day

Ice storage: 12kg

Power: 320W

Voltage: 220V/50HZ



ICE MAKING MACHINE

Type: Stainless Steel Commercial Ice Cube Machine

Capacity: 80KG

Size: 510*590*820mm

Capacity: 80kg/day

Ice storage: 15kg

Power: 510W

Voltage: 220V/50HZ



MANUAL POTATO CHIPS CUTTER

Model no AS-ST04

Description: Manual potato chips cutter machine

Size: 170*228*150mm

Material: Stainless steel

N.W 4KG



POTATO PEELER 15KG CHARGE 200KGS PER HOUR

Model: TP15

Description: 8KG Potato Peeler

Dimension: 430*440*720 mm

Voltage: 220V/50Hz, single phase

Power: 0.75KW

Capacity: 8KG/Timer

Production Capacity: 240KG/H

- Suitable for potato, taro, sweet potato, water chestnut and so on



POTATO PEELER 15KG CHARGE - 400KGS PER HOUR

Model: TP15

Description: 15KG Potato Peeler

Dimension: 520*495*790 mm

Voltage: 220V/50Hz, single phase

Power: 1.1KW

Capacity: 15KG/Timer

Production Capacity: 400KG/H

- Suitable for potato, taro, sweet potato, water chestnut and so on



ELECTRIC POTATO CHIPS CUTTER MACHINE

Description: Electric potato chips cutter machine

Size: 620*165*270mm

Voltage: 220~240V/50Hz

Power: 40W

Capacity: 100kg/H

Material: 201SS

N.W: 7.95KG

- With 3 Blades: 14X14MM, 10X10MM, 7X7 MM



TABLE TOP SOFT ICE CREAM MACHINE

Model: ASMQ-L20ABN

Description: Table Top Stainless Steel 3

Head Soft Ice Cream Machine

Dimension: 544*710*850 mm

Voltage :220V/50Hz

Power: 1900W

Refrigerant: R22

Yield: 20L/H

N.W: 88KG





GAS SHAWARMA MACHINE WITH 3 BURNERS

Description: Gas Kebab Machine (3 burners) With oil pan

Size: 540*630*800mm

Source: LPG

BTU: 52545

- With motor on the bottom of the machine so the meat can be turned around.
- For 10-15 kg meat.
- Accidental flame out protection device



GAS SHAWARMA MACHINE WITH 4 BURNERS

Model: ASGB-950

Description: Gas Kebab Machine (4 burners)

Size: 580*630*950mm

N.W.: 27KGS

- With oil pan and accidental flame out protection device
- With motor on the bottom of the machine so the meat can be turned around.
- For 15-20 kg meat.



STAINLESS STEEL SINGLE BASKET FRYER TABLE TOP WITH TAP

Size:310*480*360mm

Voltage:220V/50Hz

Power:3.25kW

Temp:50-200°C

Comes in 50l, 28l, 19l, 13l, 8l

Both Gas and electric available



STAINLESS STEEL SINGLE BASKET FRYER TABLE TOP

Size:310*480*360mm

Voltage:220V/50Hz

Power:3.25kW

Temp:50-200°C

Comes in 50l, 28l, 19l



STAINLESS STEEL SINGLE BASKET FRYER ON STAND

Size:310*480*360mm

Voltage:220V/50Hz

Power:3.25kWTemp:50-200°C

Comes in 50l, 28l, 19l



STAINLESS STEEL DOUBLE BASKET FRYER TABLE TOP WITH TAP

Size: 540 x 640 x 880mm (+150), 2 Tank
Volt: 420V/50Hz/three phase
Power: 8+8kW
Temp: 50-200°C
Comes in 50l, 28l, 19l, 13l, 8l
Both Gas and electric available



STAINLESS STEEL DOUBLE BASKET FRYER TABLE TOP

Size: 540 x 640 x 880mm (+150), 2 Tank
Volt: 420V/50Hz/three phase
Power: 8+8kW
Temp: 50-200°C
Comes in 50l, 28l, 19l, 13l, 8l
Both Gas and electric available



STAINLESS STEEL DOUBLE BASKET FRYER ON STAND

Size: 540 x 640 x 880mm (+150), 2 Tank
Volt: 420V/50Hz/three phase
Power: 8+8kW
Temp: 50-200°C
Comes in 50l, 28l, 19l, 13l, 8l
Both Gas and electric available



ELECTRIC GRIDDLE ON STAINLESS STEEL STAND

Model: LD822A

Capacity 13L

Gas source LPG



GAS GRIDDLE ON STAINLESS STEEL STAND

Model: AS-722

Description: Counter Top 2 burners Gas

Griddle 1/3 Grooved

Dimension: 730*530*340 mm

Source: LPG

N.W 24.5 kg

Comes with 3 burner 1/3 Grooved

Dimension: 900*630*400 mm



LAVA GRILL GAS ON STAND

Model: AS-589

Description: Counter Top Gas Lava Rock

Grill 2 Burner

Dimension: 600*650*480mm

- LPG/LNG is optional
- Comes with a stand



SALAMANDER GRILL ELECTRIC

Description: Electric Lift Salamander

Dimension: 800*460*505 mm ZH-800.LS

Voltage: 220V/50HZ/Single phase

Power: 6kW





HOT MAX 900 GAS | GR921

Dimension: 850x900x900

Gross (kg) / (m³): 112 / 0.97

Total Power (W): 4×8000

Gas Consumption (LPG): 2.51 kg/h

Description: Gas • On open stand
Body, paneling made of stainless steel.
Operable with LP or natural gas. Burners with pilot, safety valve and thermocouple. If the flame goes out, gas is cut off.



HOT MAX 900 GAS | GR911

Dimension: 425x900x900

Gross (kg) / (m³): 67 / 0.51

Total Power (W): 2×8000

Gas Consumption (LPG): 1.26 kg/h

Description: Gas • On open stand
Body, paneling made of stainless steel.
Operable with LP or natural gas. Burners with pilot, safety valve and thermocouple. If the flame goes out, gas is cut off.



HOT MAX 900 GAS | GR922E

Dimension: 850x900x900

Gross (kg) / (m³): 158 / 0.97

Total Power (W): 4×8000 6000

Gas Consumption (LPG): 2.51 kg/h

Description: Gas • on 2/1 GN Electric oven •
4 burners Without tray and container Body, paneling made of stainless steel. LP or natural gas. Burners with pilot, safety valve and thermocouple. Controlled by thermostats against overheating. The oven with two fans.



HOT MAX 900 GAS | GR922P

Dimension: 850x900x900

Gross (kg) / (m³): 180 / 0.97

Total Power (W): 14000 7500

Gas Consumption (LPG): 1.69 kg/h

Description: Gas • on 2/1 GN gas oven
Without tray and container Body, paneling made of stainless steel.

LP or natural gas. Burners with pilot, safety valve and thermocouple. Oven burner with ignition, pilot, thermocouple and thermostat. If the flame goes out, gas are cutted off.

Each gas burner provides heat economy, operating independently from each other.



HOT MAX 900 GAS | GR931

Dimension: 1275x900x900

Gross (kg) / (m³): 159 / 1.44

Total Power (W): 6×8000

Gas Consumption (LPG): 3.77 kg/h

Description: Gas • On open stand
Body, paneling made of stainless steel.

Operable with LP or natural gas. Burners with pilot, safety valve and thermocouple. If the flame goes out, gas is cut off.



HOT MAX 900 GAS | GR932

Dimension: 1275x900x900

Gross (kg) / (m³): 203 / 1.44

Total Power (W): 6×8000 7500

Gas Consumption (LPG): 4.35 kg/h

Description: Gas • On 2/1 GN gas oven • 6 burners
Without tray and container

GR922K+GR911 Body, paneling made of stainless steel. LP or natural gas. Burners with pilot, safety valve and thermocouple. Oven burner with ignition, pilot, thermocouple and thermostat. If the flame goes out, gas is cut off. Each gas burner provides heat economy, operating independently from each other.



HOTMAX 900 GG911G - FRY TOP

Dimension: 425x900x900

Gross (kg) / (m³): 75 / 0.51

Total Power (W): 7500

Gas Consumption (LPG): 0.59 kg/h

Description: Gas • Grooved surface Mirror finishing • Chrome coated Body, paneling made of stainless steel.

Operable with LP or natural gas. Controlled by thermostat. Burner with ignition, pilot, thermocouple and thermostat.

If the flame goes out, gas is cut off.

Removable fat container.



HOTMAX 900 GG921G - FRY TOP

Dimension: 850x900x900

Gross (kg) / (m³): 145 / 0.97

Total Power (W): 2x7500

Gas Consumption (LPG): 1.18 kg/h

Description: Gas • Grooved surface Mirror finishing • Chrome coated Body, panelling made of stainless steel.

Operable with LP or natural gas. Controlled by thermostat. Burner with ignition, pilot, thermocouple and thermostat. If the flame goes out, gas are cut off.

Removable fat container.



HOTMAX 700 WR721-S | GAS WOK COOKER

Dimension: 800x700x290

Gross (kg) / (m³): 47 / 0.25

Total Power (W): 2x16000

Gas Consumption (LPG): 1.88 kg/h

Description: Gas, Body, paneling made of stainless steel. LP or natural gas

Each gas burner provides heat economy, operating independently from each other.

Burners with pilot, safety valve and thermocouple. If the flame goes out, gas is cut off.



HOTMAX 700 | FRY TOP GG721SG-S

Dimension: 800x700x290

Gross (kg) / (m³): 91 / 0.35

Total Power (W): 2x6000

Gas Consumption (LPG): 0.94 kg/h

Description: Gas • 1/2 Smooth, 1/2 Grooved surface Uncoated surface. Body, panelling made of stainless steel.

Operable with LP or natural gas. Controlled by thermostat. Burner with ignition, pilot, thermocouple and thermostat.

If the flame goes out, gas is cut off.

Removable fat container.



HOTMAX 900 GG921G - FRY TOP

Dimension: 850x900x900

Gross (kg) / (m³): 145 / 0.97

Total Power (W): 2x7500

Gas Consumption (LPG): 1.18 kg/h

Description: Gas • Grooved surface Mirror finishing • Chrome coated Body, panelling made of stainless steel.

Operable with LP or natural gas. Controlled by thermostat. Burner with ignition, pilot, thermocouple and thermostat. If the flame goes out, gas are cut off. Removable fat container.



HOTMAX 700 GAS VAPOR GRILL | GW711-S

Dimension: 400x700x290

Gross (kg) / (m³): 60 / 0.18

Total Power (W): 6000

Gas Consumption (LPG): 0.47 kg/h

Description: Gas, Body, panelling made of stainless steel. Operable with LP or natural gas. Controlled by thermostat. Burner with ignition, pilot, thermocouple and thermostat. If the flame goes out, gas are cut off. Removable fat container.



HOTMAX 600 PASTA COOKER | EMH604

Dimension: 400x600x265

Gross (kg) / (m³): 91 / 0.35

Total Power (W): 1x3000

Basket: 145x200x170

Energy: 220V / 50Hz

Description: Electric. Body paneling baskets and wells made of stainless steel. Controlled by thermostat. Safety thermostat



HOTMAX 700 CHIPS SCUTTLE | EPC711-S

Dimension: 400x700x290

Capacity: 1x28

Gross (kg) / (m³): 30 / 0.21

Total Power (W): 650/350

Energy: 220V 50Hz

Description: Made of stainless steel. Heated with ceramic heating element. Container 1/1 GN.



HOTMAX 700 GAS VAPOR GRILL | GW711-S

Dimension: 400x700x290

Gross (kg) / (m³): 60 / 0.18

Total Power (W): 6000

Gas Consumption (LPG): 0.47 kg/h

Description: Gas, Body, panelling made of stainless steel. Operable with LP or natural gas. Controlled by thermostat. Burner with ignition, pilot, thermocouple and thermostat. If the flame goes out, gas are cutted off. Removable fat container.



STAINLESS STEEL UNDER COUNTER FRIDGE WITH GLASS DOOR

Model no SSP-UC-712

- Size: 1200*700*800mm,
- Size: 1500*700*800mm,
- Size: 1800*700*800mm
- Internal capacity: 7 Cubic ft (200Lits)SS
- Internal capacity 9 Cubic Ft (260Lits)SS
- Internal capacity 12 Cubic Ft (340Lits) SS

Material" SUS201

Temperature: 10~-5°C

Voltage: 220V/50HZ

- With glass door
- Digital controller
- Self-closing door



STAINLESS STEEL UNDER COUNTER FRIDGE WITH STAINLESS STEEL DOOR

- Size: 1200*700*800mm,
- Size: 1500*700*800mm
- Internal capacity: 7 Cubic ft (200Lits)SS
- Internal capacity: 9 Cubic Ft (260Lits)SS

Material: SUS201

Cooling temperature: 10~-5°C

Voltage: 220V/50HZ

- Digital controller
- Self-closing door Static
- With Stainless Steel door



STAINLESS STEEL SINGLE DOOR REACH-IN REFRIGERATOR FAN ASSISTED

Size :620*760*1970M, 620*760*1970MM SS

Material: SUS201

Temperature: 10~-5°C

Voltage: 220V/50HZ

With glass door

Self-closing door

Digital controller





STAINLESS STEEL DOUBLE DOOR REACH-IN REFRIGERATOR WITH GLASS DOOR FAN ASSISTED

Size: 1220*760*1970mm SS

Material: SUS201

Temperature: 10~-5°C

Voltage: 220V/50HZ

- Self-closing door Fan
- digital controller
- With glass door



STAINLESS STEEL SOLID DOOR REACH-IN COMBINED FREEZER / REFRIGERATOR

Description: Stainless Steel 4 door Freezer / Refrigerator

Size: 1200*700*1950mm SS

Temperature: Refrigerator : 10~0, Freezer : 0~-15°C

Voltage: 220V/50HZ

- Material: SUS201
- Digital controller
- Static cooling



STAINLESS STEEL 2 DOOR SINGLE DOOR REACH-IN REFRIGERATOR

Description: Stainless Steel Refrigerator

Size: 620*730*1950mm SS

Material: SUS201

Voltage: 220V/50HZ

Temperature: 0~-15°C

- Digital controller
- Static cooling



MEAT DISPLAY SHOWCASE

Description: Meat display counter

- Size: 1200*1050*1200mm,
1500*1050*1200mm

Refrigerant: R290 -Static cooling system

Temperature: 8~2°C

Voltage: 220V/50HZ



ELECTRIC STAINLESS STEEL WARMING SHOWCASE

Description: Electric Stainless steel warming showcase

Size: 600x490x615mm, 900x490x615mm

Voltage / power: 220V/50Hz/1.84KW

Temperature: 50~85 °C

- 2 Good display effect
- Curved
- Glass Warming Showcase



TABLE TOP HEATED DISPLAY UNIT

Type: Straight type

Size: 900*580*730mm

Base: stainless steel

Temperature: 30~70°C

Voltage: 220V/50HZ

- Digital controller



FREE STANDING HEATED SHOWCASE

Type: Straight type

Size: 900*670*1200mm

Base: marble

Temperature: 30~70°C -Digital controller

Voltage: 220V/50HZ



GLASS TOP FREEZER DISPLAY UNIT

Model: SD/SC-360

Static cooling system

Copper tube

Temperature: 0~-18°C

Volume: 360L

R290 220V/50HZ

- Size: 1434×684×870mm
- Size: 1650*700*870mm



STAINLESS STEEL HEATED DISPLAY CABINET

Model: AR60-1

Description: Electric Stainless steel warming showcase

Size: 660x490x615mm

Voltage /power: 220V/50Hz/1.84KW

Temperature: 50-85 °C

- Good display effect, Curved Glass showcase
- Temperature controller from 50-85 °C
- There are three layers to display and four sides with glass



STAINLESS STEEL REFRIGERATED SALAD / PIZZA TOPPING COUNTERS

Size: 1130 x 404 x 450mm With 4 GN
Containers of 1/3GN

Size: 1480x404x450mm With 6 GN
Containers of 1/3GN

Size: 1830x404x451mm With 8 GN
Containers of 1/3GN



GLASS TOP FREEZER DISPLAY UNIT

Model: SD/SC-360

Size: 1434x684x870mm -Copper tube
Temperature: 0~-18°C -Static cooling
system

Volume: 360L

Voltage: 220V/50HZ



FOOD WARMER

Arc Food warmer

Voltage: 220V/50Hz

Power: 0.85kW

Temperature: 30-85°C

Size: 355*425*485mm

Size: 665*500*620mm

Size: 960*460*620mm



TABLE TOP BAIN MARIE

Model: ABM-25

Size 520*195*545mm



TABLE TO HEAVY DUTY
GAS STOCK POT
COOKER - 2 RING
BURNER

Type: 2 ring Burner

Size: 300mm x 300mm x 250mm

Burner diameter: 180mm



HEAVY DUTY GAS STOCK
POT COOKER - 3 RING
BURNER

Type: 3 ring Burner

Size: 400mm x 400mm x 250mm

Burner diameter: 220mm



HEAVY DUTY GAS STOCK
POT COOKER - 4 RING
BURNER

Type: 4 ring Burner

Size: 500mm x 500mm x 250mm

Burner diameter: 340mm



GASTRONOM PANS

Steam PanFull: x150 SIZE: 530×325×150mm

1/1

Steam PanFull: x100 GN Full x100

Steam PanFull: x65 GN Full x65

Steam PanFull: XLid GN Full xLID

Steam Pan: 1/2 x150 GN 1/2 x150

Steam Pan: 1/2 x100 GN 1/2 x100

Steam Pan: 1/2 x65 GN 1/2 x65

Steam Pan: 1/2 xLID GN 1/2 xLID

Steam Pan: 1/3 x150 Gastronom pans

Size:325×176×150mm 1/3

Steam Pan: 1/3 x100 Gastronom pans

Size:325×176×100mm 1/3

Steam Pan: 1/3 x65 Gastronom pans

Size:325×176×65mm 1/3

Steam Pan: 1/3 xLID Gastronom pans Cover

Size:325×176mm 1/3

Steam Pan: 1/4 x100 Gastronom pans

Size:325×176×100mm



ALUMINUM OVEN TRAY

Size: 400x600x30mm



CREPE MAKER

Model: ASZH-1E

Description: Stainless steel Electric Crepe Maker, Teflon coating and non-stick material.

Power: 3KW

Dimension: 460*475*230 mm

Voltage: 220V/50Hz

Temperature controller: 50 to 300°C

Cooking plate diameter: 400 mm

N.W 16.5kg



HAMBURGER PRESS

Diameter: 100mm

Height: 160mm

N.W: 4.8KG



SOUP TUREEN

Model: ZQ-C17

Description: Electric Soup pot

Voltage: 220V 50/60Hz

Inside pot diameter: 23cm

Inside Pot Depth: 26cm

Outside Diameter: 34cm

Product height: 34cm



HOOD TYPE DISH WASHER

Description: Dish washer

Dimension: 670*780*1450mm, without working table, with 3 baskets

Voltage /Power: 380V/3 Phase/50Hz/13kw

N.W: 115kg

G.W: 130kgs



POPCORN MACHINE

Description: Popcorn Maker

Size: 540*405*660mm

Voltage: 220V/50Hz/1.3Kw

Capacity: 8Oz

- Tempered glass



KEG DISPENSER WITH COOLER

Size: 590*590*840mm

Inner size: 540*470*720mm

Material: SUS304

Weight: 40kg

- 2*20L keg+1*4L cylinder Temp control+ display R600a



PLATE WARMER DROP IN PLATE DISPENSER

Size: 400*400*770mm SS

Material: SUS201

Power: 400w

Plate size: 23-30cm

Plate quantity: 50 pcs

Top open diameter: 385mm

Voltage: 220V



COMMERCIAL CUP HOLDER

Description: Beverage cup lid divider

Size: 620*205*205mm With 4

SIZE OF Cup (9.4CM, 7.6CM, 6.4CM 5.5CM)

Material: PP/ABS

Color: Black



MULTIFUNCTIONAL STORAGE RACK

Multifunctional storage rack



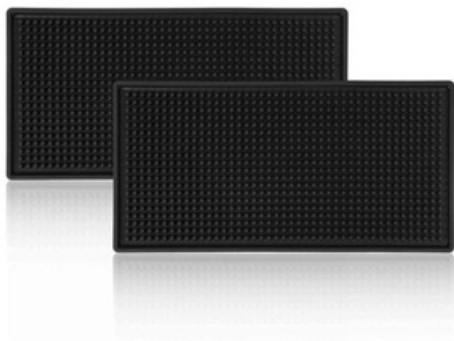
INSECTOCUTER

Type: Electric shock type -LED-10W
Size: L56*D6*H24.5cm



HEAT LAMP

Description: Heating Lamps
Diameter: 17.5CM
Voltage: 220V
Power: 250W



BAR MAT BLACK

Bar Mat Black
Color: Black
Material: PVC

Size: 45*30*1cm
Size: 60*8*1cm



STAINLESS STEEL FINISH WIRE RACK / COOLING RACKS

Description: 4 Layers Chrome Wire Shelves

Material Finish: Chrome Plated

Wire diameter: 5.8/4.3/2.8 mm

Wire spacing: 17 mm

Column: 25.4*1.0m

- Without Wheels
- Size: 1200x530x1800mm
- Size: 1500x530x1800mm



LAUNDRY

SSP offers durable stainless steel laundry equipment, including washers and dryers, for commercial settings requiring efficiency



VLWE13E – WASHER EXTRACTORS

Models: VLWE13E

DIMENSIONS / WEIGHT: 880x900x1570 / 480

ELECTRIC POWER: 9.000

MOTOR POWER: 2.2000.

DRUM CAPACITY: 131-13

PACK. DIM. / GROSS WEIGHT MM/KG: 920x940x1620 / 495

Description: AISI 304 quality stainless steel cabinet. Touch screen digital control. Up to 99 programming option with pre-set 25 standard programs. Resumable programmed against power outage. Frequency controlled motor, 300 G spin cycle. Hot & cold water inlet, Saves on energy & water consumption.

Standard liquid soap connections, , Anti-foam system, 3,5 & 6 layered detergent dispenser for washing powder and liquid soap. Wide loading/unloading door and cone-shaped drum surface ensures, easy to access, Loading / Unloading door safety switch. Possibility of fixing onto ground, Electric heating system, Anti-vibration suspension system, Electrostatic painted steel frame, Waterproof electrical box.



VLWE20E – WASHER EXTRACTOR

Models: VLWE20E

DIMENSIONS / WEIGHT: 995x1075x1720 / 713

ELECTRIC POWER: 12.000

MOTOR POWER: 3.000

DRUM CAPACITY: 216-20

PACK. DIM. / GROSS WEIGHT MM/KG: 1035x1175x1770 / 730

Description: AISI 304 quality stainless steel cabinet. Touch screen digital control. Up to 99 programming option with pre-set 25 standard programs. Resumable programmed against power outage. Frequency controlled motor, 300 G spin cycle. Hot & cold water inlet, Saves on energy & water consumption.

Standard liquid soap connections, , Anti-foam system, 3,5 & 6 layered detergent dispenser for washing powder and liquid soap. Wide loading/unloading door and cone-shaped drum surface ensures, easy to access, Loading / Unloading door safety switch. Possibility of fixing onto ground, Electric heating system, Anti-vibration suspension system, Electrostatic painted steel frame, Waterproof electrical box.





VLWE30E – WASHER EXTRACTOR

Models: VLWE30E

DIMENSIONS / WEIGHT: 1135x1335x1870 / 1030

ELECTRIC POWER: 18.000

MOTOR POWER: 4.000.

DRUM CAPACITY: 309-30

PACK. DIM. / GROSS WEIGHT MM/KG: 1175x1375x1920/ 1.055

Description: AISI 304 quality stainless steel cabinet. Touch screen digital control. Up to 99 programming option with pre-set 25 standard programs. Resumable programmed against power outage. Frequency controlled motor, 300 G spin cycle. Hot & cold water inlet, Saves on energy & water consumption.

Standard liquid soap connections, , Anti-foam system, 3,5 & 6 layered detergent dispenser for washing powder and liquid soap. Wide loading/unloading door and cone-shaped drum surface ensures, easy to access, Loading / Unloading door safety switch. Possibility of fixing onto ground, Electric heating system, Anti-vibration suspension system, Electrostatic painted steel frame, Waterproof electrical box.



VLWE40E – WASHER EXTRACTOR

Models: VLWE40E

DIMENSIONS / WEIGHT: 1135x1505x1870 / 1420

ELECTRIC POWER: 18.000

MOTOR POWER: 5.500

DRUM CAPACITY: 425-40

PACK. DIM. / GROSS WEIGHT MM/KG: 1175x1545x1920/ 1.445

Description: AISI 304 quality stainless steel cabinet. Touch screen digital control. Up to 99 programming option with pre-set 25 standard programs. Resumable programmed against power outage. Frequency controlled motor, 300 G spin cycle. Hot & cold water inlet, Saves on energy & water consumption.

Standard liquid soap connections, , Anti-foam system, 3,5 & 6 layered detergent dispenser for washing powder and liquid soap. Wide loading/unloading door and cone-shaped drum surface ensures, easy to access, Loading / Unloading door safety switch. Possibility of fixing onto ground, Electric heating system, Anti-vibration suspension system, Electrostatic painted steel frame, Waterproof electrical box.





VLWE60E – WASHER EXTRACTOR

Models: VLWE60E

DIMENSIONS / WEIGHT: 1585x1780x2070 / 2250

ELECTRIC POWER: 36.000

MOTOR POWER: 11.000.

DRUM CAPACITY: 631-60

PACK. DIM. / GROSS WEIGHT MM/KG: 1605x1820x2120 / 2.290

Description: AISI 304 quality stainless steel cabinet. Touch screen digital control. Up to 99 programming option with pre-set 25 standard programs. Resumable programmed against power outage. Frequency controlled motor, 300 G spin cycle. Hot & cold water inlet, Saves on energy & water consumption.

Standard liquid soap connections, , Anti-foam system, 3,5 & 6 layered detergent dispenser for washing powder and liquid soap. Wide loading/unloading door and cone-shaped drum surface ensures, easy to access, Loading / Unloading door safety switch. Possibility of fixing onto ground, Electric heating system, Anti-vibration suspension system, Electrostatic painted steel frame, Waterproof electrical box.





VLTD15 – TUMBLE DRYER

Models: VLTD15

Dimensions / Weight: 1085x975x1720/ 390

Electric power: 15.0

Motor power: 750

Drum capacity: 309-15

Pack. Dim. / Gross Weight mm/kg: 1125x1015x1770/ 310

Description: Electrostatic painted steel frame, AISI 304 quality stainless steel drum, AISI 304 quality loading/unloading lid. Program and temperature indicator, Resumable programmed against to power outage, 10 Programs, Ceramic wool insulated drum to prevent heat loss. Reversing drum, The wide, easy-to-reach air filter, Electrostatic painted exterior body. High / Low drying cycle (40 RPM – 28 RPM), Loading / Unloading door safety switch, Cool down system



VLTD20 – TUMBLE DRYER

Models: VLTD20

Dimensions / Weight: 1085x1180x1720/ 390

Electric power: 18.0

Motor power: 750

Drum capacity: 425-20

Pack. Dim. / Gross Weight mm/kg: 1125x1220x1770/ 410

Description: Electrostatic painted steel frame, AISI 304 quality stainless steel drum, AISI 304 quality loading/unloading lid. Program and temperature indicator, Resumable programmed against to power outage, 10 Programs, Ceramic wool insulated drum to prevent heat loss. Reversing drum, The wide, easy-to-reach air filter, Electrostatic painted exterior body. High / Low drying cycle (40 RPM – 28 RPM), Loading / Unloading door safety switch, Cool down system



VLTD30 – TUMBLE DRYER

Models: VLTD30

Dimensions / Weight: 1305x1230x1920/ 480

Electric power: 25.9

Motor power: 1.500

Drum capacity: 631-30

Pack. Dim. / Gross Weight mm/kg: 1345x1270x1970/ 505

Description: Electrostatic painted steel frame, AISI 304 quality stainless steel drum, AISI 304 quality loading/unloading lid. Program and temperature indicator, Resumable programmed against to power outage, 10 Programs, Ceramic wool insulated drum to prevent heat loss. Reversing drum, The wide, easy-to-reach air filter, Electrostatic painted exterior body. High / Low drying cycle (40 RPM – 28 RPM), Loading / Unloading door safety switch, Cool down system



VLTD40 – TUMBLE DRYER

Models: VLTD40

Dimensions / Weight: 1305x1470x1920/ 600

Electric power: 32.4

Motor power: 1.500

Drum capacity: 830-40

Pack. Dim. / Gross Weight mm/kg: 1345x1510x1970/ 630

Description: Electrostatic painted steel frame, AISI 304 quality stainless steel drum, AISI 304 quality loading/unloading lid. Program and temperature indicator, Resumable programmed against to power outage, 10 Programs, Ceramic wool insulated drum to prevent heat loss. Reversing drum, The wide, easy-to-reach air filter, Electrostatic painted exterior body. High / Low drying cycle (40 RPM – 28 RPM), Loading / Unloading door safety switch, Cool down system



VLTD60 – TUMBLE DRYER

Models: VLTD60

Dimensions / Weight: 1455x1735x1980 / 1.090

Electric power: 32.4

Motor power: 2.200

Drum capacity: 1206-60

Pack. Dim. / Gross Weight mm/kg: 1495x1775x2030 / 1.125

Description: Electrostatic painted steel frame, AISI 304 quality stainless steel drum, AISI 304 quality loading/unloading lid. Program and temperature indicator, Resumable programmed against to power outage, 10 Programs, Ceramic wool insulated drum to prevent heat loss. Reversing drum, The wide, easy-to-reach air filter, Electrostatic painted exterior body. High / Low drying cycle (40 RPM – 28 RPM), Loading / Unloading door safety switch, Cool down system



VLRI32150 – ROLLER IRONER WITH DRYER BAND

Models: VLRI32150

Dimensions / Weight: 2250x1020x1170/ 653

Roller dimensions: 550x1500

Electric power: 12.6

Drum capacity: 750

Pack. Dim. / Gross Weight mm/kg: 2300x1070x1220/ 663

Description: Galvanized plating cylinder for better heat conduction, Reversing cylinder. Hood for humidity and steam discharge. Finger protection and emergency button for more safety. Protection cover for all electrical components. Up to 220 °C durable NOMEX ironing belts



VLRI32180– ROLLER IRONER WITH DRYER BAND

Models: VLRI32180

Dimensions / Weight: 2550x1020x1170/ 800

Roller dimensions: 320x1800

Electric power: 15.3

Drum capacity: 750

Pack. Dim. / Gross Weight mm/kg: 2600x1070x1220/ 810

Description: Galvanized plating cylinder for better heat conduction, Reversing cylinder. Hood for humidity and steam discharge. Finger protection and emergency button for more safety. Protection cover for all electrical components. Up to 220 °C durable NOMEX ironing belts



VLRI55150 – ROLLER IRONER WITH DRYER BAND

Models: VLRI55150

Dimensions / Weight: 2250x1200x1500/ 1.185

Roller dimensions: 550x1500

Electric power: 21.0

Drum capacity: 750

Pack. Dim. / Gross Weight mm/kg: 2300x1250x1550/ 1.200

Description: Galvanized plating cylinder for better heat conduction, Reversing cylinder. Hood for humidity and steam discharge. Finger protection and emergency button for more safety. Protection cover for all electrical components. Up to 220 °C durable NOMEX ironing belts



VLRI55180 – ROLLER IRONER WITH DRYER BAND

Models: VLRI55180

Dimensions / Weight: 2550x1200x1500/ 1.280

Roller dimensions: 550x1800

Electric power: 24.0

Drum capacity: 1.100

Pack. Dim. / Gross Weight mm/kg: 2600x1250x1550/ 1.300

Description: Galvanized plating cylinder for better heat conduction, Reversing cylinder. Hood for humidity and steam discharge. Finger protection and emergency button for more safety. Protection cover for all electrical components. Up to 220 °C durable NOMEX ironing belts



VLRI55200 – ROLLER IRONER WITH DRYER BAND

Models: VLRI55200

Dimensions / Weight: 2750x1300x1500/ 1.340

Roller dimensions: 550x2000

Electric power: 27.0

Drum capacity: 1.100

Pack. Dim. / Gross Weight mm/kg: 2800x1250x1550/ 1.360

Description: Galvanized plating cylinder for better heat conduction, Reversing cylinder. Hood for humidity and steam discharge. Finger protection and emergency button for more safety. Protection cover for all electrical components. Up to 220 °C durable NOMEX ironing belts



VLRI60180 – ROLLER IRONER WITH DRYER BAND

Models: VLRI60180

Dimensions / Weight: 2550x1300x1700/ 1.350

Roller dimensions: 600x1800

Electric power: 24.5

Drum capacity: 1.100

Pack. Dim. / Gross Weight mm/kg: 2600x1350x1750/ 1.370

Description: Galvanized plating cylinder for better heat conduction, Reversing cylinder. Hood for humidity and steam discharge. Finger protection and emergency button for more safety. Protection cover for all electrical components. Up to 220 °C durable NOMEX ironing belts



VLRI60200 – ROLLER IRONER WITH DRYER BAND

Model: VLRI60200

Dimensions / Weight: 2750x1300x1700/ 1.420

Roller dimensions: 600x2000

Electric power: 27.0

Drum capacity: 1,100

Pack. Dim. / Gross Weight mm/kg: 2800x1350x1750/ 1.440

Description: Galvanized plating cylinder for better heat conduction, Reversing cylinder. Hood for humidity and steam discharge. Finger protection and emergency button for more safety. Protection cover for all electrical components. Up to 220 °C durable NOMEX ironing belts



VLRI75200 – ROLLER IRONER WITH DRYER BAND

Model: VLRI75200

Dimensions / Weight: 3500x1500x1800/ 1.730

Roller dimensions: 750x2000

Electric power: 28.5

Drum capacity: 1.500

Pack. Dim. / Gross Weight mm/kg: 3050x1630x1950/ 1.760

Description: Galvanized plating cylinder for better heat conduction, Reversing cylinder. Hood for humidity and steam discharge. Finger protection and emergency button for more safety. Protection cover for all electrical components. Up to 220 °C durable NOMEX ironing belts



VLRI60200 – ROLLER IRONER WITH DRYER BAND

Model: VLRI60200

Dimensions / Weight: 2750x1300x1700/ 1.420

Roller dimensions: 600x2000

Electric power: 27.0

Drum capacity: 1,100

Pack. Dim. / Gross Weight mm/kg: 2800x1350x1750/ 1.440

Description: Galvanized plating cylinder for better heat conduction, Reversing cylinder. Hood for humidity and steam discharge. Finger protection and emergency button for more safety. Protection cover for all electrical components. Up to 220 °C durable NOMEX ironing belts



VLRI75200 – ROLLER IRONER WITH DRYER BAND

Model: VLRI75200

Dimensions / Weight: 3500x1500x1800/ 1.730

Roller dimensions: 750x2000

Electric power: 28.5

Drum capacity: 1.500

Pack. Dim. / Gross Weight mm/kg: 3050x1630x1950/ 1.760

Description: Galvanized plating cylinder for better heat conduction, Reversing cylinder. Hood for humidity and steam discharge. Finger protection and emergency button for more safety. Protection cover for all electrical components. Up to 220 °C durable NOMEX ironing belts



VLRI75250- ROLLER IRONER WITH DRYER BAND

Model: VLRI75250

Dimensions / Weight: 4000x1500x1800/ 1.950

Roller dimensions: 750x2500

Electric power: 36.0

Drum capacity: 2.200

Pack. Dim. / Gross Weight mm/kg: 3550x1630x1950/ 1.980

Description: Galvanized plating cylinder for better heat conduction, Reversing cylinder. Hood for humidity and steam discharge. Finger protection and emergency button for more safety. Protection cover for all electrical components. Up to 220 °C durable NOMEX ironing belts





PRESS IRONER

Model: VPRU-01

Dimensions / Weight: 1580x1200x1350/350

Electric power: 20.750

Capacity: 25

Pack. Dim. / Gross Weight mm/kg: 1620x1250x1450/380

Description: Strong vacuuming feature, %100 safety with high pressure alarm. Automatic water supply system with water pump. Work setup time is 25 minutes. Operating pressure is 4 bar.



IRON BOARD

Model: VPAU-01

Dimensions / Weight: 1490x420x910/80

Electric power: 6.5

Capacity: 30

Pack. Dim. / Gross Weight mm/kg: 1550x500x980/89

Description: Galvanized plating cylinder for better heat conduction, Reversing cylinder. Hood for humidity and steam discharge. Finger protection and emergency button for more safety. Protection cover for all electrical components. Up to 220 °C durable NOMEX ironing belts



LINEN WASHING TABLE

Dimensions: 1900x800x850

Description: Linen washing table



STAINLESS STEEL CHUTES

Description: Industrial laundry chutes are designed to streamline the process of collecting and transporting laundry in commercial or industrial settings. Made from durable stainless steel, these chutes ensure smooth, hygienic, and efficient transfer of soiled laundry to collection areas. Their corrosion-resistant properties ensure longevity and easy maintenance, while the design allows for high-capacity use and quick disposal of linens, towels, and uniforms.

Size (mm): Custom sizes available (typically ranging from 500 mm to 800 mm in width and adjustable lengths, depending on the system requirements).



CUSTOM LINEN TROLLEY

Ideal for use in hotels, hospitals, gyms and areas of high turnover linen. Customizable to customers' requirements. Mounted on a stainless steel frame with washable canvas material.



STAINLESS STEEL PRODUCTS LTD

CONTACT US

www.ssp.co.ke
@sspl.ke

+254719625495
info@ssp.co.ke